

Weigh Modules • Tank and Hopper Kits

65092 TWA

Heavy-Capacity Tank Weighing Assembly, Sensortronics



Available in configurations with three or four mounting assemblies.

The 65092 Tank Weighing Assembly is designed for use with tanks, bins and large-capacity storage silos. Features include low-profile design for easy installation and self-checking capability with freedom of movement to accommodate for thermal expansion. Also features off-center loading/side load capabilities of up to 30% of full scale capacity. Mounting hardware is hardened alloy steel with zinc plating. The load cell is alloy steel with nickel plating. The 65092 is supplied with 25 feet of load cell cable.

Complete Kit Includes:

- 1 EL604STA NEMA 4X stainless steel signal trim junction box
- 3 or 4 65092 zinc-plated mild steel mounting assemblies
- 3 or 4 65094 nickel plated high-alloy steel compression load cells
- 25' of our Hostile Environment EL147HE SURVIVOR® load cell cable

APPLICATIONS:

- Tank, bin and silo weighing
- Bulk inventory management

STANDARD FEATURES:

- Capacities: 50,000-500,000lb (22,679.7-226,796.9kg)
- Mounts directly to foundation or structural support
- Free-floating top mounting plate provides side checking with provisions for thermal expansion
- No check rods required
- Lift-off protected
- Low profile/low deflection
- Symmetrical mounting bolt pattern simplifies installation
- Integral conduit adaptor
- Accommodates Sensortronics 65094 load cell

OPTIONAL FEATURES:

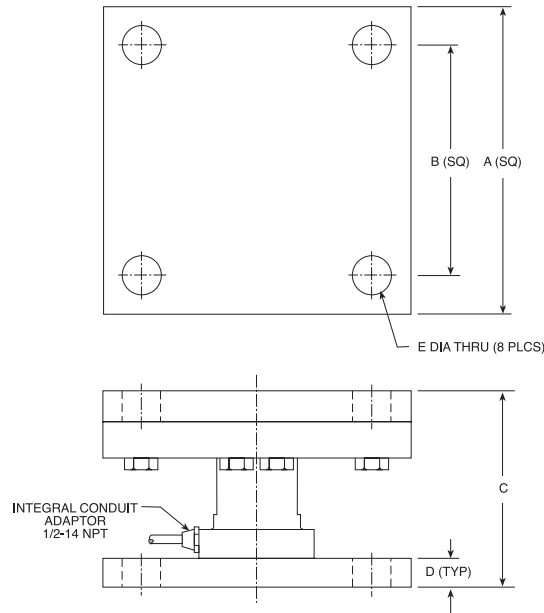
- Stainless steel versions available. Consult factory.
- High-temperature versions available. Consult factory.
- Custom mounting bolt patterns are available. Consult factory.

Assembly with integral 65094 compression canister load cell. See next page for load cell specifications.



65092 TWA Specifications

**Complete Kit!
Compare
& Save!**



LOAD CELL SPECIFICATIONS:

Safe Overload:	200% Full Scale Compression, 100% Full Scale Tension
Full Scale Output:	2.0 mV/V
Rated Excitation:	10 VDC (25 V maximum)
Nonlinearity:	0.1% Full Scale
Combined Error:	0.1% Full Scale
Temperature:	Compensated range: 14°F to 104°F/10°C to 40°C
Bridge Resistance:	350 ohms
Insulation Resistance:	5000 megohms
Material/Finish:	High-alloy steel, nickel plated
Seal Type:	Environmentally protected
Cable Length:	25'/7.6m
Cable Color Code:	Red + Excitation Black - Excitation Green ... + Signal White - Signal
Warranty:	2 years

RATED CAPACITY	DIMENSIONS					TOTAL TOP PLATE MOVEMENT
	A	B	C	D	E	
lb/inches						
50,000	8.00	6.00	5.13	0.94	0.78	.75
100,000	10.00	7.50	7.38	1.19	1.12	1.00
200,000	12.00	8.50	9.50	1.44	1.63	1.00
300,000	14.00	9.50	11.00	1.94	1.63	1.00
500,000	17.00	12.00	12.63	2.44	2.13	1.00
kg/millimeters						
22,679.6	203.2	152.4	130.3	23.9	19.8	19.1
45,359.4	254.0	190.5	187.5	30.2	28.4	25.4
90,718.7	304.8	215.9	241.3	36.6	41.4	25.4
136,078.1	355.6	241.3	279.4	49.3	41.4	25.4
226,796.9	431.8	304.8	320.8	62.0	54.1	25.4

65092 TWA ORDER INFORMATION

Load Rating (per module)	Part #	Suggested List Price
Single Modules (Include Load Cell):		
50,000 lb (22,679.6 kg)	29866	\$1,525.00
100,000 lb (45,359.4 kg)	29867	\$2,595.00
200,000 lb (90,718.7 kg)	29868	\$4,025.00
300,000 lb (136,078.1 kg)	29869	\$4,650.00
500,000 lb (226,796.9 kg)	29870	\$5,925.00
3-Module Kits:		
50,000 lb (22,679.6 kg)	29857	\$4,775.00
100,000 lb (45,359.4 kg)	29858	\$7,985.00
200,000 lb (90,718.7 kg)	29859	\$12,275.00
300,000 lb (136,078.1 kg)	29860	\$14,150.00
500,000 lb (226,796.9 kg)	29861	\$17,995.00
4-Module Kits:		
50,000 lb (22,679.6 kg)	29852	\$6,300.00
100,000 lb (45,359.4 kg)	29853	\$10,580.00
200,000 lb (90,718.7 kg)	29854	\$16,300.00
300,000 lb (136,078.1 kg)	29855	\$18,800.00
500,000 lb (226,796.9 kg)	29856	\$23,995.00

USA: 800-472-6703 • Canada/Mexico: 800-321-6703 • International: 715-234-9171

Prices & Specifications subject to change without notice