

Weigh Modules • Tank and Hopper Kits

220 UNIVERSAL MOUNT

Stainless Steel Weigh Modules, TEDEA HUNTLEIGH



Available in configurations with three or four mounting assemblies.

The 220 Universal Mount is designed to be used with the Model 220 load cell described above. The mount incorporates built-in jacking bolts to prevent damage to the load cell during installation. Its stainless steel construction is designed to be used in the harshest of environments.

Load Cell Certifications:



Module with hermetically-sealed 220 compression load cell. Refer to page 327 for load cell specifications.



Complete Kit Includes:

- 1 EL604STA NEMA 4X stainless steel signal trim junction box
- 3 or 4 220 stainless steel compression mounts
- 3 or 4 220 stainless steel hermetically-sealed compression disk load cells
- 25' of our Hostile Environment EL147HE SURVIVOR® load cell cable

APPLICATIONS:

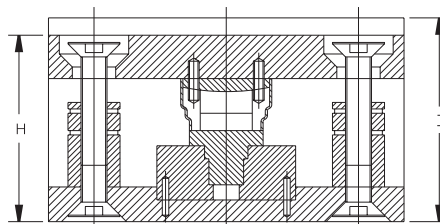
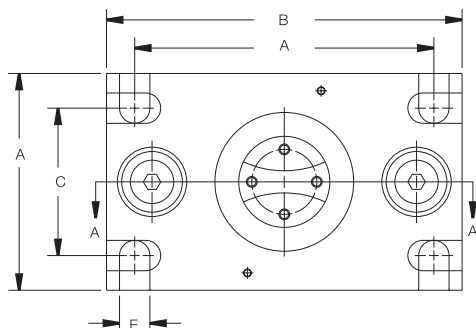
- Medium- to high-capacity tanks, bins and hoppers
- Washdown or corrosive applications
- Process control and batch weighing

STANDARD FEATURES:

- Capacities (per module): 5,000kg to 30,000kg
- Matched output load cells eliminate trimming
- 304 stainless steel construction
- Hermetically-sealed, IP66/68 stainless steel load cells
- Easy load cell replacement
- Integral jacking/shipping bolts

220 Universal Mount Specifications

NEW!
PRODUCT



RATED CAPACITY	A	B	C	DIMENSIONS D	E	H	I
kg/millimeters							
5,000	127	203	90	170	18	107	118
10,000	127	203	90	170	18	107	118
20,000/30,000	152	245	115	208	24	148	156
lb/inches							
11,023.1	5.00	8.00	3.54	6.70	.71	4.21	4.65
22,046.3	5.00	8.00	3.54	6.70	.71	4.21	4.65
44,092.7/66,139.0	5.98	9.65	4.53	8.19	.94	5.83	6.14

SPECIFICATIONS:

Full Scale Output:	2.0 mV/V
Bridge Resistance:	1000 ohms, nominal
Material/Finish:	Stainless Steel
Temperature:	Operating temperature range 14°F to 104°F/-10°C to 40°C
Manufacturer:	
Model Number:	
Safe Overload:	150% at center loading point, full scale
Rated Excitation:	10V DC (15V maximum)
Total Error:	0.020% Full scale
Seal type:	2000 megaohms sealed, IP68
Cable Length:	5m (5,000kg), 10m (10,000-20,000kg) 20m (30,000kg)
Cable Color Code:	Blue + Excitation Black - Excitation Green ... + Sense Grey - Sense White + Signal Red - Signal
Warranty:	2 years

220 UNIVERSAL MOUNT ORDER INFORMATION

Load Rating (Load Cell Capacity)	Part #	Suggested List Price
3-Module Load Cells Includes:		
5000 kg (11,023.1 lb)	66208	\$5,890.00
10,000 kg (22,046.3 lb)	66209	\$6,190.00
20,000 kg (44,092.7 lb)	66210	\$7,855.00
30,000 kg (66,139.0 lb)	66211	\$7,855.00
4-Module Load Cells Includes:		
5000 kg (11,023.1 lb)	66212	\$7,780.00
10,000 kg (22,046.3 lb)	66213	\$8,180.00
20,000 kg (44,092.7 lb)	66214	\$10,400.00
30,000 kg (66,139.0 lb)	66215	\$10,400.00

USA: 800-472-6703 • Canada/Mexico: 800-321-6703 • International: 715-234-9171

Prices & Specifications subject to change without notice