

SURVIVOR[®] HE Weigh Modules

2100HE Heavy-Capacity Weigh Modules



Incorporating an articulating load plate, hardened load pin and double-ended beam load cell into one simple design, the 2100HE tolerates eccentric loads and side loads of up to 100% of capacity.

The 2100HE comes standard with NTEP-certified, 1:5000 division class III load cells, yielding up to 0.02% total error. An integral conduit adapter offers added washdown protection. These standard features give the 2100HE accuracy and dependability in one heavy-weight package.

The simple load introduction and load cell design provides consistent accuracy in washdown applications, making the 2100HE ideal for high-capacity hostile environments.

Complete Kit Includes:

- 1 EL604STA NEMA 4X stainless steel signal-trim junction box
- 3 or 4 2100HE stainless steel compression mounts
- 3 or 4 RL75060 or RL75060S stainless steel, welded seal double-ended beam load cells
- 25' of our Hostile Environment EL147HE SURVIVOR[®] load cell cable

Load Cell Certifications:



APPLICATIONS:

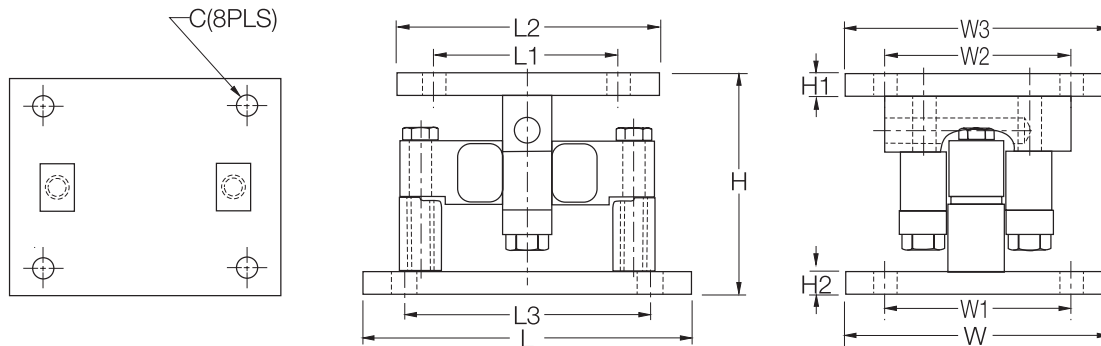
- Heavy-capacity tanks, blenders, reactors and bulk inventory management
- Petroleum refining process control
- Chemical blending/batching
- Hostile environment truck and railroad track weighing

STANDARD FEATURES:

- All stainless steel construction
- Welded seal, stainless steel load cells, IP67, guaranteed waterproof
- NTEP-certified load cells, 5000d, Class III/10,000d, Class IIIL Multiple Cell
- Bolt-in-place design; module bolts directly to tank leg without requiring additional load buttons or mounting plates
- Self-checking design with lift-off/tip-over protection
- 2-year warranty

2100HE Specifications

**Complete Kit!
Compare
& Save!**



SURVIVOR Weigh Modules

RATED CAPACITY	C	H	H1	H2	L	DIMENSIONS						
						L1	L2	L3	W	W1	W2	W3
lb/inches												
20,000	.78	6.85	.75	.75	10.00	6.00	8.00	7.50	8.00	6.00	6.00	8.00
35,000-100,000	1.13	9.42	1.00	1.00	14.00	6.50	9.00	11.50	10.00	7.50	6.50	9.00
kg/millimeters												
9071.9	19.8	174.0	19.1	19.1	254.0	152.4	203.2	190.5	203.2	152.4	152.4	203.2
15,875.7-45,359.2	28.7	239.3	25.4	25.4	355.6	165.1	228.6	292.1	254.0	190.5	165.1	228.6

2100HE SINGLE MODULE ORDER INFORMATION

Load Rating (per module)	Part #	Suggested List Price
Single Modules (Include Load Cell)		
20,000 lb (9071.8 kg)	32951	\$1,445.00
25,000 lb (11,339.8 kg)	65541	\$1,445.00
35,000 lb (15,875.7 kg)	32952	\$2,110.00
50,000 lb (22,679.6 kg)	32953	\$2,190.00
60,000 lb (27,215.5 kg)	32954	\$2,190.00
75,000 lb (34,019.4 kg)	32955	\$2,190.00
100,000 lb (45,359.2 kg)	32956	\$3,685.00

2100HE KIT ORDER INFORMATION

Load Rating (per module)	Part #	Suggested List Price
3-Module Kits		
20,000 lb (9071.8 kg)	32970	\$4,500.00
25,000 lb (11,339.8 kg)	65984	\$4,500.00
35,000 lb (15,875.7 kg)	32969	\$6,500.00
50,000 lb (22,679.6 kg)	32968	\$6,750.00
60,000 lb (27,215.5 kg)	32967	\$6,750.00
75,000 lb (34,019.4 kg)	32966	\$6,750.00
100,000 lb (45,359.2 kg)	32965	\$11,275.00
4-Module Kits		
20,000 lb (9071.8 kg)	32964	\$6,000.00
25,000 lb (11,339.8 kg)	65983	\$6,000.00
35,000 lb (15,875.7 kg)	32963	\$8,600.00
50,000 lb (22,679.6 kg)	32962	\$8,900.00
60,000 lb (27,215.5 kg)	32961	\$8,900.00
75,000 lb (34,019.4 kg)	32960	\$8,900.00
100,000 lb (45,359.2 kg)	32959	\$14,900.00