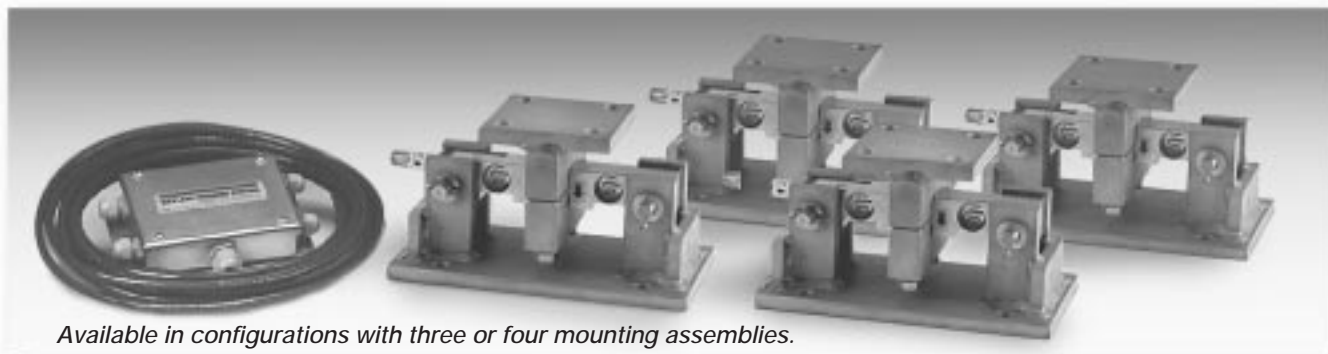


# Weigh Modules • Tank and Hopper Kits

## RL1600 HE Series Stainless Steel, Hermetically Sealed



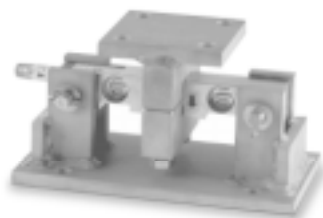
*Available in configurations with three or four mounting assemblies.*

The RL1600 HE Series Mounting Module Kit utilizes several Rice Lake Weighing Systems components to provide an unmatched level of performance in tank and hopper weighing applications. The RL1600 HE Series kit is ideally suited for indoor and outdoor process control operations in the medium-capacity ranges. Each module incorporates self-checking capabilities for thermal expansion and contraction.

Load Cell Certifications:



*Fabricated stainless steel module with RL75016 HE double-ended beam load cell. Refer to page 136 for load cell specifications.*



### *Complete Kit Includes:*

- 1 EL604STA NEMA 4X stainless steel signal trim junction box
- 3 or 4 RL1600 stainless steel compression mounts
- 3 or 4 RL75016 HE stainless steel, hermetically sealed double-ended shear beam load cells
- 25' of our Hostile Environment EL147HE SURVIVOR® load cell cable

### **APPLICATIONS:**

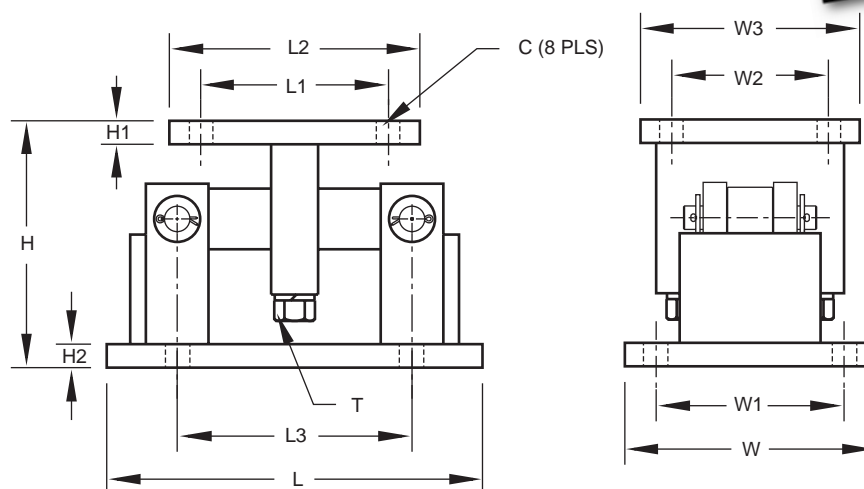
- Medium-capacity tanks, bins, and hoppers
- Bulk material management
- Dry ingredient batching, mixing, and blending

### **STANDARD FEATURES:**

- Capacities (per module): 1000-25,000 lb (453.6-11,339.8 kg)
- 304 stainless steel construction
- Self-checking easy-to-use design allows module to be bolted directly to tank leg without requiring additional mounting plates or load buttons
- Hermetically-sealed IP66/68 protected load cells
- Double-ended shear beam design, center loaded

# 304 Stainless Steel, Hermetically Sealed RL1600 HE Series Specifications

**Complete Kit!  
Compare  
& Save!**



RATED CAPACITY	DIMENSIONS												
	C	H	H1	H2	L	L1	L2	L3	T	W	W1	W2	W3
<b>lb/inches</b>													
1000-5000	.56	5.00	.50	.50	9.25	2.75	4.00	6.25	1/2-13 UNC	5.00	3.75	2.75	4.00
10,000-25,000	.78	7.87	.75	.75	12.00	6.00	8.00	7.50	3/4-10 UNC	8.00	6.00	6.00	8.00
<b>kg/millimeters</b>													
453.6-2268.0	14.2	127.0	12.7	12.7	235.0	69.9	101.6	158.8	1/2-13 UNC	127.0	95.3	69.9	101.6
4535.9-11,339.8	19.8	199.9	19.1	19.1	304.8	152.4	203.2	190.5	3/4-10 UNC	203.2	152.4	152.4	203.2

## RL1600 HE ORDER INFORMATION

Load Rating (per module)	Part #	Suggested List Price
<b>3-Module Kits</b>		
1000 lb (453.6 kg) .....	46723 .....	\$3,100.00
2500 lb (1134.0 kg) .....	46724 .....	\$3,100.00
5000 lb (2268.0 kg) .....	46725 .....	\$3,100.00
10,000 lb (4535.9 kg) .....	46726 .....	\$4,700.00
15,000 lb (6803.9 kg) .....	46727 .....	\$4,700.00
25,000 lb (11,339.8 kg) .....	46728 .....	\$4,700.00
<b>4-Module Kits</b>		
1000 lb (453.6 kg) .....	46729 .....	\$4,275.00
2500 lb (1134.0 kg) .....	46730 .....	\$4,275.00
5000 lb (2268.0 kg) .....	46731 .....	\$4,275.00
10,000 lb (4535.9 kg) .....	46732 .....	\$6,475.00
15,000 lb (6803.9 kg) .....	46733 .....	\$6,475.00
25,000 lb (11,339.8 kg) .....	46734 .....	\$6,475.00

USA: 800-472-6703 • Canada/Mexico: 800-321-6703 • International: 715-234-9171

Prices & Specifications subject to change without notice