

Weigh Modules • Tank and Hopper Kits

RL1600 Series

Stainless Steel, Rice Lake Weighing Systems/Sensortronics



The RL1600 Series Mounting Module Kit utilizes several Rice Lake Weighing Systems components to provide an unmatched level of performance in tank and hopper weighing applications. The RL1600 Series kit is ideally suited for indoor and outdoor process control operations in the medium- to high-capacity ranges. Each module incorporates self-checking capabilities for thermal expansion and contraction.

Load Cell Certifications:



Fabricated stainless steel module with RL75016 SS double-ended beam load cell. Refer to page 135 for load cell specifications.



Complete Kit Includes:

- 1 EL604STA NEMA 4X stainless steel signal trim junction box
- 3 or 4 RL1600 stainless steel compression mounts
- 3 or 4 RL75016SS stainless steel double-ended shear beam load cells
- 25' of our Hostile Environment EL147HE SURVIVOR® load cell cable

APPLICATIONS:

- Medium- to heavy-capacity tanks, bins, and hoppers
- Bulk material management
- Dry ingredient batching, mixing, and blending

STANDARD FEATURES:

- Capacities (per module): 1000-75,000 lb (453.6-34,019.5 kg)
- 304 stainless steel construction
- Self-checking easy-to-use design allows module to be bolted directly to tank leg without requiring additional mounting plates or load buttons
- Environmentally protected load cells
- Double-ended shear beam design, center loaded

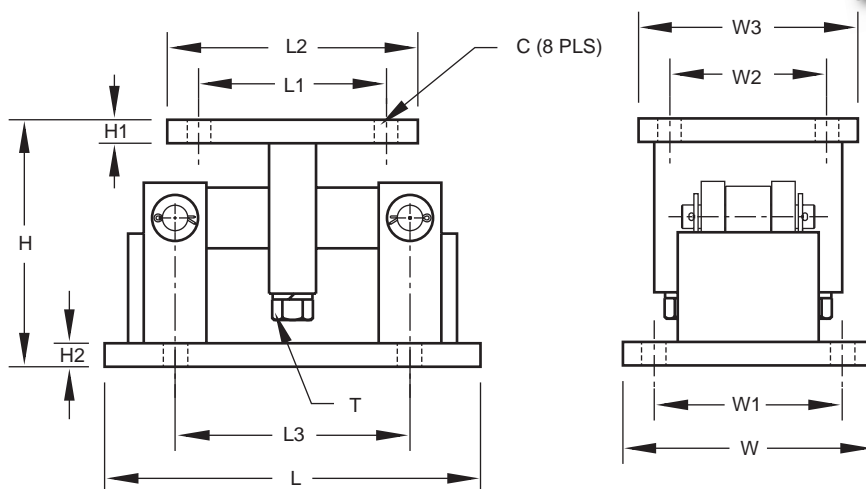
OPTIONAL FEATURES:

- Kits available with Sensortronics 65016W SS load cells

304 Stainless Steel RL1600 Series Specifications

**Complete Kit!
Compare
& Save!**

**NEW
LOWER
PRICES**



RATED CAPACITY	DIMENSIONS													
	C	H	H1	H2	L	L1	L2	L3	T	W	W1	W2	W3	
lb/inches														
1000-5000	.56	5.00	.50	.50	9.25	2.75	4.00	6.25	1/2-13 UNC	5.00	3.75	2.75	4.00	
10,000-25,000	.78	7.87	.75	.75	12.00	6.00	8.00	7.50	3/4-10 UNC	8.00	6.00	6.00	8.00	
50,000-75,000	.78	9.31	1.00	1.00	16.25	6.50	9.00	11.50	1 1/4-7 UNC	12.00	9.50	6.50	9.00	
kg/millimeters														
453.6-2268.0	14.2	127.0	12.7	12.7	235.0	69.9	101.6	158.8	1/2-13 UNC	127.0	95.3	69.9	101.6	
4535.9-11,339.8	19.8	199.9	19.1	19.1	304.8	152.4	203.2	190.5	3/4-10 UNC	203.2	152.4	152.4	203.2	
22,679.7-34,019.5	19.8	236.5	25.4	25.4	412.8	165.1	228.6	292.1	1 1/4-7 UNC	304.8	241.3	165.1	228.6	

RL1600 ORDER INFORMATION

Load Rating (per module)	Part #	Suggested List Price
Single Modules (Do NOT Include Load Cell)		
1000-5000 lb (453.6-2268.0 kg)	17813	\$565.00
10,000-25,000 lb (4535.9-11,339.8 kg)	17815	\$995.00
50,000 lb (22,679.6 kg)	17842	\$2,195.00
75,000 lb (34,019.5 kg)	25347	\$2,195.00
3-Module Kits		
1000 lb (453.6 kg)	18141	\$2,995.00
1500 lb (680.4 kg)	18142	\$2,995.00
2000 lb (907.2 kg)	18143	\$2,995.00
2500 lb (1134.0 kg)	18144	\$2,995.00
5000 lb (2268.0 kg)	18145	\$2,995.00
10,000 lb (4535.9 kg)	18146	\$4,595.00
15,000 lb (6803.9 kg)	18147	\$4,595.00
20,000 lb (9071.9 kg)	18148	\$4,595.00
25,000 lb (11,339.8 kg)	18149	\$4,595.00
50,000 lb (22,679.6 kg)	18150	\$8,995.00
75,000 lb (34,019.5 kg)	25352	\$8,995.00
4-Module Kits		
1000 lb (453.6 kg)	18152	\$3,850.00
1500 lb (680.4 kg)	18153	\$3,850.00
2000 lb (907.2 kg)	18154	\$3,850.00
2500 lb (1134.0 kg)	18155	\$3,850.00
5000 lb (2268.0 kg)	18156	\$3,850.00
10,000 lb (4535.9 kg)	18157	\$6,150.00
15,000 lb (6803.9 kg)	18158	\$6,150.00
20,000 lb (9071.9 kg)	18159	\$6,150.00
25,000 lb (11,339.8 kg)	18160	\$6,150.00
50,000 lb (22,679.6 kg)	18161	\$13,150.00
75,000 lb (34,019.5 kg)	25353	\$13,150.00

SENSORTRONICS 65016SS ORDER INFORMATION

Load Rating (per module)	Part #	Suggested List Price
3-Module Kits		
1000 lb (453.6 kg)	18213	\$3,425.00
1500 lb (680.4 kg)	18214	\$3,425.00
2500 lb (1134.0 kg)	18216	\$3,425.00
5000 lb (2268.0 kg)	18217	\$3,425.00
10,000 lb (4535.9 kg)	18218	\$5,095.00
15,000 lb (6803.9 kg)	18219	\$5,095.00
20,000 lb (9071.9 kg)	18220	\$5,095.00
25,000 lb (11,339.8 kg)	18221	\$5,095.00
50,000 lb (22,679.6 kg)	18222	\$10,250.00
75,000 lb (34,019.5 kg)	25354	\$10,250.00
4-Module Kits		
1000 lb (453.6 kg)	18224	\$4,550.00
1500 lb (680.4 kg)	18225	\$4,550.00
2500 lb (1134.0 kg)	18227	\$4,550.00
5000 lb (2268.0 kg)	18228	\$4,550.00
10,000 lb (4535.9 kg)	18229	\$6,775.00
15,000 lb (6803.9 kg)	18230	\$6,775.00
20,000 lb (9071.9 kg)	18231	\$6,775.00
25,000 lb (11,339.8 kg)	18232	\$6,775.00
50,000 lb (22,679.6 kg)	18233	\$13,695.00
75,000 lb (34,019.5 kg)	25355	\$13,695.00

USA: 800-472-6703 • Canada/Mexico: 800-321-6703 • International: 715-234-9171

Prices & Specifications subject to change without notice