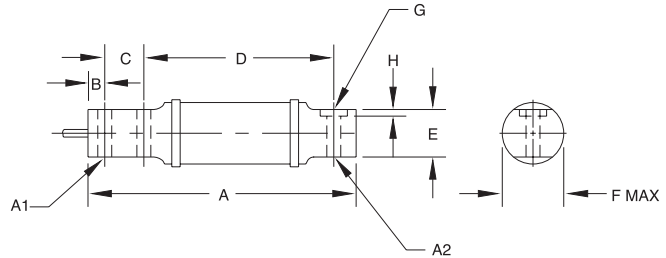


RL40BBS Single-Ended Beam, Alloy Steel, IP65



RATED CAPACITY	DIMENSIONS									
	A	A1	A2	B	C	D	E	F	G	H
lb/inches										
50-100	6.00	.31	.31	.38	.88	4.25	1.06	1.41	—	—
200-1000	6.62	.52	.52	.50	1.12	4.25	1.06	1.41	—	—
2500	11.38	.53	.62	.50	1.75	8.25	1.25	2.19	1.19	.12
kg/millimeters										
22.7-45.4	52.4	7.9	7.9	9.7	22.4	108.0	26.9	35.8	—	—
90.7-453.6	168.2	13.2	13.2	12.7	28.5	108.0	26.9	35.8	—	—
1134.0	289.1	13.5	15.8	12.7	44.5	209.6	31.8	55.6	30.3	3.0

SPECIFICATIONS:

Full Scale Output:	2.0 mV/V	Insulation Resistance:	5000 megohms
Bridge Resistance:	50-1000 lb/750 ohms, nominal 2500 lb/347 ohms, nominal	Deflection at Capacity:	50 lb = .015"/.38mm, 100 lb = .005"/.64mm, 200-250 lb = .030"/.76mm, 500 lb = .020"/.51mm, 1000 lb = .040"/1.02mm, 2500 lb = .120"/3.05mm
Material/Finish:	High-alloy steel, nickel plated	Seal Type:	Environmentally protected with neoprene sleeve, IP65
Temperature:	Compensated range 15°F to 115°F/-9°C to 46°C	Cable Length:	10'/3.1m
Safe Overload:	150% Full scale	Cable Color Code:	Green ... + Excitation Black - Excitation White + Signal Red - Signal
Rated Excitation:	10V AC/DC (15V maximum)	Warranty:	2 years
Nonlinearity:	0.03% Full scale		
Hysteresis:	0.02% Full scale		

RL40BBS ORDER INFORMATION

Load Rating	Part #	Suggested List Price
50 lb (22.7 kg)	17395	\$375.00
100 lb (45.4 kg)	17343	\$375.00
200 lb (90.7 kg)	17396	\$375.00
250 lb (113.4 kg)	17397	\$375.00
500 lb (226.8 kg)	17398	\$375.00
1000 lb (453.6 kg)	17344	\$375.00
2500 lb (1134.0 kg)	17345	\$595.00

INTERCHANGEABLE PRODUCTS

Manufacturer	Model
HBM	(see page 218) BBS
Sensortronics	60007
BLH®	LBG1, LBP1 Series
Fairbanks®	3-481XX-1
Fairbanks®	3-48660-1

Fairbanks is a registered trademark of Fairbanks Scales
BLH is a registered trademark of BLH Electronics.