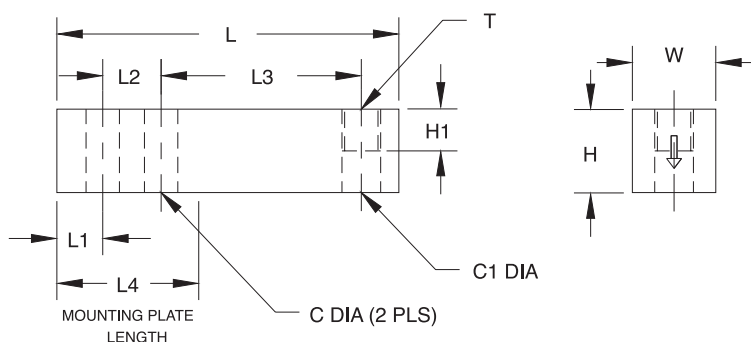


RL39523 Single-Ended Beam, Stainless Steel Welded Seal, IP67



RATED CAPACITY	DIMENSIONS										
	C	C1	H	H1	L	L1	L2	L3	L4	T	W
lb/inches											
1000-4000	.53	.53	1.25	.62	6.12	1.62	1.00	3.00	3.38	1/2-20 UNF	1.25
5000-10,000	.78	.78	1.50	.74	7.71	1.71	1.50	3.75	4.08	3/4-16 UNF	1.50
kg/millimeters											
453.6-1814.4	13.5	13.5	31.8	15.8	155.5	41.2	25.4	76.2	85.9	1/2-20 UNF	31.8
2268.0-4535.9	19.8	19.8	38.1	18.8	195.8	43.4	38.1	95.3	103.6	3/4-16 UNF	38.1

SPECIFICATIONS:

Full Scale Output:	3.0 mV/V	Insulation Resistance:	5000 megohms
Bridge Resistance:	350 ohms, nominal	Deflection at Capacity:	1000 lb = .016"/1.4mm, 2500 lb = .41"/1.0mm, 4000 lb = .041"/1.0mm, 5000 lb = .035"/.9mm, 10,000 lb = .042"/1.1mm
Material/Finish:	Stainless steel	Cable Length:	20'/6.1m
Temperature:	Compensated range 0°F to 150°F/-18°C to 65°C	Cable Color Code:	Red + Excitation Black - Excitation Green ... + Signal White - Signal
Seal Type:	Welded seal strain gauge*, IP67	Warranty:	2 years
Safe Overload:	150% Full scale		
Rated Excitation:	10V AC/DC (15V maximum)		
Non-repeatability:	0.02% Full scale (RL39523-D1) 0.01% Full scale (RL39523-D3)		
Combined Error:	0.1% Full scale (RL39523-D1) 0.03% Full scale (RL39523-D3)		

RL39523 ORDER INFORMATION

Load Rating	Part #	Suggested List Price
RL39523-D3		
1000 lb (453.6 kg)	17241	\$525.00
2500 lb (1134.0 kg)	17242	\$525.00
4000 lb (1814.4 kg)	17243	\$525.00
5000 lb (2268.0 kg)	17244	\$595.00
10,000 lb (4535.9 kg)	17245	\$600.00

Conduit Adapter Kit** (must be factory installed to maintain warranty)

3/8-24 Nipple	31533*	\$15.00
3/8-24 to 1/4-18 NPT	31534*	\$15.00

* Parts #31533 and #31534 must be installed together to form the Conduit Adapter Kit.

INTERCHANGEABLE PRODUCTS

Manufacturer	Model
Revere Transducers (see page 240)	9523
(has counterbored load hole)	

** Conduit is recommended for maximum protection against the ingress of water and moisture through the cable entry.