

R-30 Retail Scale



Measurement
Canada
Approved

PART #	MODEL	CAPACITY
64303	... R-30 w/plastic platter	30 lb/15 kg
64302	... R-30 w/stainless steel platter	30 lb/15 kg

The R-30 retail scale is the ultimate choice for basic price-computing applications. Delivering unmatched convenience and accuracy, the R-30 provides one-button operation while displaying weight to 1/100th of a pound.

For extra convenience, the R-30 features two LCD displays, one in front for the operator and the other in back for the customer. Additionally, it has a large 12" x 8 1/2" platter for easy and efficient weighing. What's more, the R-30 incorporates an accumulator for totaling the day's receipts.

The R-30 is NTEP certified and operates on either battery or AC. It is available in a 30-lb/15 kg capacity and has an optional stainless steel platter.

Applications

- Point-of-sale weighing and price-computing

Standard Features

- NTEP certified, Legal-For-Trade
- Customer display on rear of unit
- Operates on 12 VDC adapter or 6 "D" size alkaline batteries (adapter included)
- Compact design makes it easy to transport
- Configure for lb or kg

Options/Accessories

- 64982 KG option
- 49790 Additional AC-adapter
- 64041 Additional operating manual



WEIGHING RANGE:

30 lb x 0.01 lb
15 kg x 0.005 kg

SCALE INTERVAL:

0.01

TEMPERATURE RANGE:

Storage: 5°F to 140°F (-15°C to 60°C)
Operating: 32°F to 104°F (0°C to 40°C)

POWER:

6 x 1.5 volt size "D" alkaline

DC ADAPTER:

12 VDC, 50-100 mA

ZERO TRACKING:

Automatic
Center zero accuracy: $\pm 1/2$ div
Maximum range: $\pm 2\%$

TARE REDUCTION:

Up to full scale capacity (lb version)
9.995 kg maximum (kg version)
Tare displayed with [-] sign to the left

LOAD CELL EXCITATION VOLTAGE:

5 VDC

DISPLAY:

5 digits for weight and price; 6 digits for total price

WEIGHT:

8.5 lb (3.9 kg)

APPROVALS:

NTEP certified, CC# 98-133, Class III 3000d
Measurement Canada approved, AM-5275

WARRANTY:

One year limited warranty

DIMENSIONS

Platter: 12" W x 8.5" D

Overall: 12.25" W x 13" D x 5" H

Ishida Nova-II Price-Computing Scale



PART #	MODEL	CAPACITY	GRADUATION
46555 ...	NOVA-II-15 lb	15 lb/6 kg	0.005 lb/0.002 kg
41465 ...	NOVA-II-30 lb	30 lb/15 kg ..	0.01 lb/0.005 kg
46554 ...	NOVA-II-60 lb	60 lb/30 kg ..	0.02 lb/0.01 kg
46556 ...	NOVA-II-30 lb w/pole ..	30 lb/15 kg ..	0.01 lb/0.005 kg

The Ishida NOVA-II retail scale provides 1/3000 accuracy for high precision performance. NTEP-certified, this versatile scale offers an operator display as well as a convenient customer display. The compact design maximizes work space and advanced function keys simplify calculations.

Easy to use, the NOVA-II provides one-touch zero adjustment and tare selection. The "save" key stores tare and unit prices until new values are entered. Convenient preset keys store up to 15 unit prices or tares.

Applications

- Point-of-sale weighing and price computing

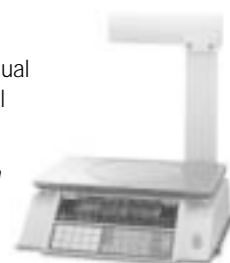
Standard Features

- High accuracy
- Advanced computing functions
- Convenient adjustment keys
- Memory function
- Compact design
- Customer display on rear of unit

Options/ Accessories

- 47976 Fish Platter
- 47977 Produce Platter
- 48727 Additional operating manual
- 48728 Additional service manual

(Nova-II 30 lb with pole display)



Ishida BC-3000 Price-Computing Scale with Printer



PART #	DESCRIPTION	CAPACITY
53867 ...	Dual Range BC-3000	15 lb/0.005 lb 30 lb x 0.01 lb

The Ishida BC-3000 retail scale/printer offers sophisticated data storage and flexible printing capability in point-of-sale applications.

With the ability to store up to 176 preset items (with shift key), the BC-3000 can be configured for simple operation, and will speed up customer cycle times.

Choose from seven different character sites when programming text descriptions. In addition, reverse print is available for maximum label flexibility.

Applications

- Sophisticated point-of-sale weighing

Standard Features

- Dual range: 0-14.995 x 0.005 lb/15-30 x 0.01 lb
- 88 one-touch preset keys. Each key can be assigned two items using the shift key, for a total of 176 presets
- Thermal dot printer
- Reverse printing
- Seven different character sizes that are easily programmed
- Printed data positions can be freely altered, allowing the user to make unique label
- Keyboard formats for presetting and programming can be easily switched using key sheets
- Memory capacity: 128 K

Options/ Accessories

- 46916 Produce Platter
- 46917 Fish Platter
- 46921 Korean/English language firmware
- N/A Chinese/Japanese/English firmware
- 46923 KG version firmware
- 46919 Remote load cell kit
- 47341 Continuous roll thermal journal paper, 64mm wide
- N/A Single range firmware
- 44299 Additional operating manual
- 48775 Additional service manual

ACCURACY:

1/3000

DISPLAY:

VFD, 0.453" (11.5mm) character height

DISPLAY ITEMS:

Weight: 5 digits

Unit price: 5 digits

Total price: 6 digits

WEIGHT:

Without pole display: 14.3 lb (6.5 kg)

With pole display: 15.9 lb (7.2 kg)

PRESET KEY:

Stores up to 15 unit prices or tares

POWER SOURCE:115/230V $\pm 10\%$, 50/60Hz**POWER CONSUMPTION:**

5 W (115 VAC)

6 W (230 VAC)

OPERATING TEMPERATURE:

23°F to 104°F (-5°C to 40°C)

CLASSIFICATION:

NTEP certified, CC# 98-001

DIMENSIONS**Without pole display**

A: 14.1" (357mm)

C: 13.8" (350mm)

B: 14.2" (360mm)

D: 4.53" (115mm)

E: 9.8" (249mm)

With pole display

A: 14.1" (357mm)

E: 2.76" (70mm)

B: 15.4" (390mm)

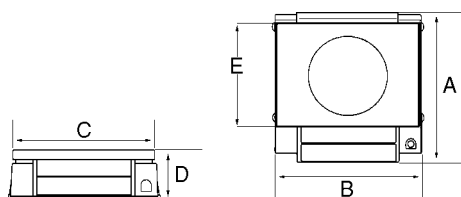
F: 16.9" (429mm)

C: 14.2" (360mm)

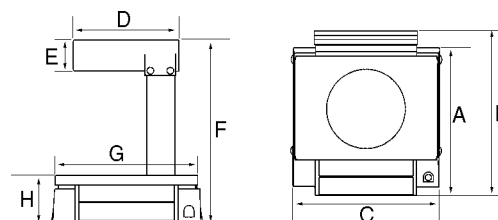
G: 13.8" (350mm)

D: 9.84" (250mm)

H: 4.53" (115mm)



Without pole display



With pole display

BC-3000

Specifications

CAPACITY:

0-14.995 x 0.005 lb/15-30 x 0.01 lb

ACCURACY:

1/3000

DISPLAY:

U/P: 6 digits

Weight: 5 digits

Price: 7 digits

PRINTER:

Thermal dot printer

PRINTING SPEED:

70 mm (2.36" per second)

PRESET KEYS:

88 keys (176 presets using shift key)

MEMORY CAPACITY:

128 K

LABEL SIZE:

2.52" x 3.35" (64mm x 85mm) (variable)

Printing width: Max. 2.36" (60mm)

ELECTRICAL POWER:

115 VAC, 60Hz

POWER CONSUMPTION:

Stand-by: 50W

In operation: 100W

WEIGHT:

26.5 lb (12 kg)

CLASSIFICATION:

NTEP certified, CC# 95-057A3

DIMENSIONS

A: 9.84" (250mm)

G: 17.32" (440mm)

B: 15.75" (400mm)

H: 6.61" (168mm)

C: 2.56" (65mm)

I: 17.72" (450mm)

D: 8.86" (225mm)

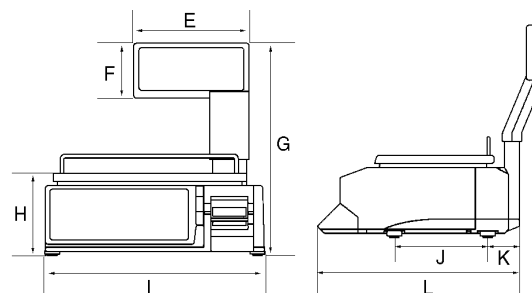
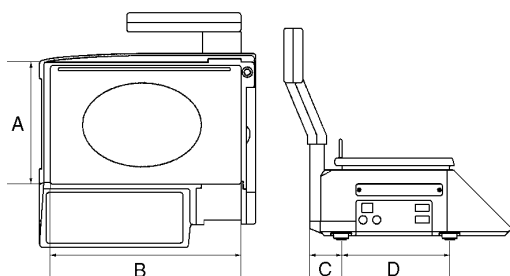
J: 7.80" (198mm)

E: 9.45" (240mm)

K: 2.56" (65mm)

F: 4.53" (115mm)

L: 16.54" (420mm)



Ishida AC-3000H Hanging Scale with Printer

NEW!
Product



PART # MODEL

52273 ... AC-3000H Dual Display

The AC-3000H hanging scale provides all the capabilities of a sophisticated price computing scale and printer, yet maintains incredibly simple operation for staff and customers. Perfect for weighing seafood, fruits, and vegetables, the AC-3000H is able to store up to 176 PLUs.

For maximum protection, it's housed in a stainless steel enclosure and comes with two weighing pans to accommodate either dry or wet products. The AC-3000H has an easy-to-read display that indicates weight and prices, and scrolls promotional messages. This versatile product also includes flexible label formatting, allowing store owners to cater to the specific needs of their customers. Store managers will be sold on the AC-3000H when they see its ability to expedite the checkout process.

Applications

- Produce Department
- Fish/Seafood Department

Standard Features

- Flexible, efficient label production
- 88 one-touch preset keys. Each key can be assigned two items using the convenient shift key, for a total of 176 presets
- Keyboard formats for presetting and programming can be easily switched using key sheets
- Dot matrix display
- Easy-to-read display, shows weights, prices, and is capable of displaying messages
- Stainless steel enclosure

Options/Accessories

- 52311 Operator's manual
- 52636 Programmer's manual

** Because store designs and applications can vary greatly, mounting hardware must be supplied by the distributor or store.*

Rear display



CAPACITY:

30 lb/0.01 lb (single)
(15 kg/0.005 kg) (single)

DISPLAY:

Unit price: 6 digits
Weight: 5 digits
Price: 7 digits
Dot display: 256 x 16 dots

PRINTING SPEED:

3.1"/sec (80mm/sec)

PRESET:

88 keys (176 presets)

MEMORY CAPACITY:

Standard: 256 KB

WEIGHT:

35.3 lbs (16 kg)

LABEL SIZE:

Flexible, max. width: 2.5" (64mm)

POWER SUPPLY:

AC115V/50/60 Hz

POWER CONSUMPTION:

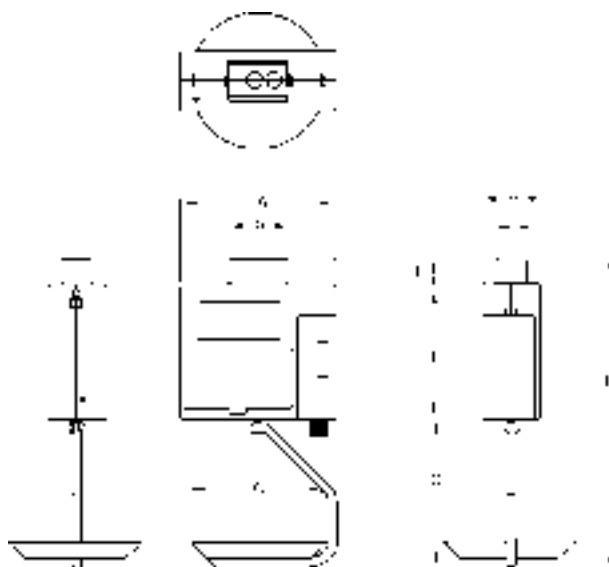
Stand-by: 50W
In operation: 100W

CLASSIFICATION:

NTEP certified, CC# 95-057A3

WARRANTY:

One-year limited warranty

**DIMENSIONS**

A: 16.22" (412mm)	F: 13.85" (352mm)
B: 5.98" (152mm)	G: 13.77" (350mm)
C: 14.05" (357mm)	H: 5.98" (152mm)
D: 30.17" (766mm)	I: 3.14" (80mm)
E: 2.55" (65mm)	

Ishida Astra Scale/Printer

NEW!
Product



PART #	MODEL	CAPACITY
64986	Astra	30 lb

The Astra exhibits a combination of performance and price unmatched by any scale in its class. It allows operators to create a variety of eye-catching point of purchase labels up to 64mm wide and 85mm long at an industry-leading 80mm per second. In addition, its ergonomic design successfully delivers customer convenience. The Astra's simple side label loading feature, easy-to-read display, and user-friendly keyboard design allows operators to deliver fast, friendly customer service.

The Astra's performance is enhanced by innovative features. Setup time is reduced with the help of unique, easy-to-use, software tools called AstraLink and AstraLabel. AstraLink allows PLUs, messages and presets to be programmed from a PC. It conveniently allows operators to generate preset key sheets from their own printer. AstraLabel allows simple label formatting. The Astra also offers a proportional tare feature that can be programmed per PLU or entered through the keyboard. What's more, operators can use the cloning feature to transfer some or all of the scale memory from one Astra directly to another.

From meat departments to delis, seafood to specialty shops, the Astra retail scale printer is the leader in form, function and value.

Applications

- Supermarket
- Deli
- Candy shop
- C-Store
- Seafood shop
- Specialty store

Standard Features

- Programmable function keys
- Store up to 2,000 PLUs
- Print speed of 3.15" (80mm) per second
- Convenient side-loading label feature
- RS-232 communications (for AstraLink)
- Proportional tare
- 44 keys store up to 88 presets

Options/Accessories

- 66435 Astra CD-ROM (Contains AstraLink, AstraLabel, manuals and label format worksheets)
- 65989 AstraLink PLU editing software (3.5" diskettes)
- 66533 AstraLabel editing software (3.5" diskettes)
- 66535 RS-232 Null modem 6' cable, DB9 female to DB9 female (Astra to PC, Astra to Astra)
- 46916 Produce platter
- 46917 Fish platter
- 66534 Service manual*
- 65663 Additional operator's manual*

* Manuals can be downloaded from the distributor section of the Ishida web site at www.ishidaretail.com



CAPACITY/GRADUATIONS:

30 x 0.01 lb (15 x 0.005 kg)

DISPLAY:

Tare: 4-digits

Weight: 5-digits

Unit/Price: 5-digits

Total Price: 6-digits

ACCURACY:

1/3000

LABEL WIDTH:

1.5" - 2.52" (38mm - 64mm)

LABEL LENGTH:

1.18" - 3.35" (30mm - 85mm)

LABEL BACKING PAPER WIDTH:

Up to 2.64" (up to 67mm)

PRINTING SPEED:

3.15" per second (80mm per second)

LABEL ROLL DIMENSION:

Inside diameter: 1.57" (40mm)

Outside diameter: 3.94" (100mm)

COMMUNICATIONS:

RS-232 (for AstraLink PLU editor)

Scale data copy function

Windows® 95, 98 and NT

KEYBOARD:

64 keys (88 presets using Mode key)

MEMORY CAPACITY:

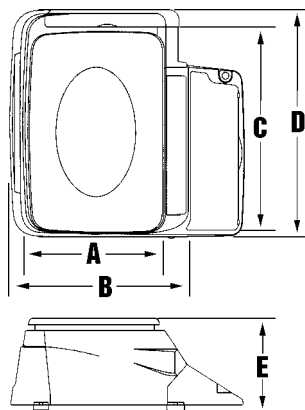
256K, 2000 PLUs (30 characters per PLU)

APPROVALS:

NTEP certified COC# 00-107, UL listed

WARRANTY:

One year limited warranty

**DIMENSIONS**

A: 9.2" (234mm)	D: 15.7" (400mm)
B: 16.3" (414mm)	E: 6.5" (165mm)
C: 14.1" (358mm)	

ASTRALINK PLU EDITING SOFTWARE

PLU Search Screen



PLU Entry Screen



Program Astra Preset Keys



Preview PLU List Report Before Printing