

Salter Super Samson Hanging Scale

- Overload protection
- Built-in tare mechanism
- Glass-filled polymer materials make the balance virtually indestructible in normal use
- Overall length at zero load: 10.3" (262mm)
- Scale length: 4.7" (120mm)
- Extended length: 15" (382mm)



Salter Little Samson Hanging Scale

- Lightweight
- Low cost
- Length at zero load: 6" (152mm)
- Scale length: 2.1" (54mm)
- Extended length: 7.7" (195mm)



Salter Model 235-10X Hanging Scale - NTEP Certified

- NTEP-certified, Class III
- Cast aluminum case
- Heavy-duty and corrosion resistant
- High-strength stainless steel fittings
- Overload protection
- Stable and accurate, 14°F to 104°F (-10°C to 40°C)
- Air dashpot
- Limited zero adjust (tool required)



Salter Model 235-6S Hanging Scale

- Shatterproof ABS case
- Versatile
- Lightweight
- Maintenance free
- Corrosion resistant
- High-strength stainless steel fittings
- Thumbwheel zero adjustment (approx. $\pm 10\%$)
- Top and bottom hook supplied
- Length with no hooks: 9.5"
- Length with hooks: 14.5"



Mechanical & Monorail Scales

Salter Model 235-10S Hanging Scale

- Shatterproof ABS case
- Lightweight and corrosion resistant
- High-strength stainless steel fittings
- Overload protection
- Thumbwheel zero adjustment (approx. $\pm 10\%$)



Salter Model 129 Hanging Scale

- Crane weigher
- Bottom hook—full swivel
- Dial diameter: 8.7" (220mm)
- 500% safety rating on hook and scale (SWL)



Salter Electro Samson Hanging Scale

- Re-zero during weighing to create a tare weight
- Allows weighing of container contents only
- Automatic shut-off after 2 minutes inactivity
- "HOLD" key feature
- Units of measure: lb-oz, kg, decimal lb
- Lifting handle
- Calibration through front panel
- Battery-operated; 9 volt alkaline battery required
- Dimensions: 13.4" x 3.7" x 2.2" (340mm x 95mm x 55mm)



RL1100 Portable Platform Scale

**Now
Available with
IQ plus® 390-DC
Indicator**

*Portable Beam with
IQ plus® 390-DC
indicator*



PART #	DESCRIPTION
19723	Avoirdupois Beam, NTEP
26680	Metric Beam, Non-NTEP
26681	Avoirdupois Double Beam, Non-NTEP
26676	Metric Double Beam, Non-NTEP
50948	Portable Beam w/IQ plus® 390-DC Indicator, NTEP

The RL-1100 heavy-duty portable beam scale is known for its ability to deliver years of trouble-free industrial weighing performance. Strict RLWS quality specifications mean the RL1100's rugged cast iron platform, base and levers exceed stability, durability and value expectations. Self-aligning, hardened, precision tool steel pivots and bearings ensure accurate and consistent weighments. It also has a large cast weigh beam that offers dual-sided graduations with a high-contrast black background for easy weight readings. Counterpoise weights provided are cast iron, slotted, and marked to scale capacity. The RL1100 Avoirdupois Beam is NTEP certified legal-for-trade for Class III, 2000 divisions.

Now available with the battery-powered IQ plus 390-DC weight indicator, the RL1100 is ideal for applications requiring portability. The base is equipped with fully-enclosed wheels for increased protection, while the indicator's electronics are guarded by a NEMA 4X stainless steel enclosure. The IQ plus 390-DC's one-inch LCD is easy to read, and RATTLETRAP® three-stage digital filtering secures accurate weighments in areas where vibration and movement are a concern. For added efficiency, it includes a configurable standby mode that saves battery life.

Applications

- General warehouse use
- Shipping and receiving
- General weighing

Standard Features

- NTEP certified
- Cast iron construction
- 1000 lb or 500 kg capacity models available
- Single or double beam configurations
- Easy-to-read die cast beam
- Locking screw knob on poise
- Slotted cast iron counterpoise weights, marked to scale capacity
- Easy-to-use weigh beam lock
- Heavy-duty wheels for portability

Options/Accessories

50573* Electronic conversion kit for existing scale (DC)

22253 Additional operating manual

** Includes IQ plus® 390-DC, RL20000 load cell, and conversion hardware.*

Please refer to page IR-3 in the Indicator section for IQ plus® 390-DC standard features and options/accessories.

CONSTRUCTION:

Cast iron platform, base and levers

WEIGH BEAM:

Die-cast aluminum dual-sided beam: graduations in .5 lb or .2 kg increments

POISE:

Steel locking screw provided

PIVOTS AND BEARINGS:

Precision-machined, hardened tool steel

OVERALL DIMENSIONS:

36.13" L x 20.25" W x 43.0" H
(917.7mm L x 514.3mm W x 215.9mm H)

PLATFORM DIMENSIONS:

27" L x 18" W x 8.50" H
(457.2mm L x 685.8mm W x 215.9mm H)

CAPACITY:

1000 lb or 500 kg

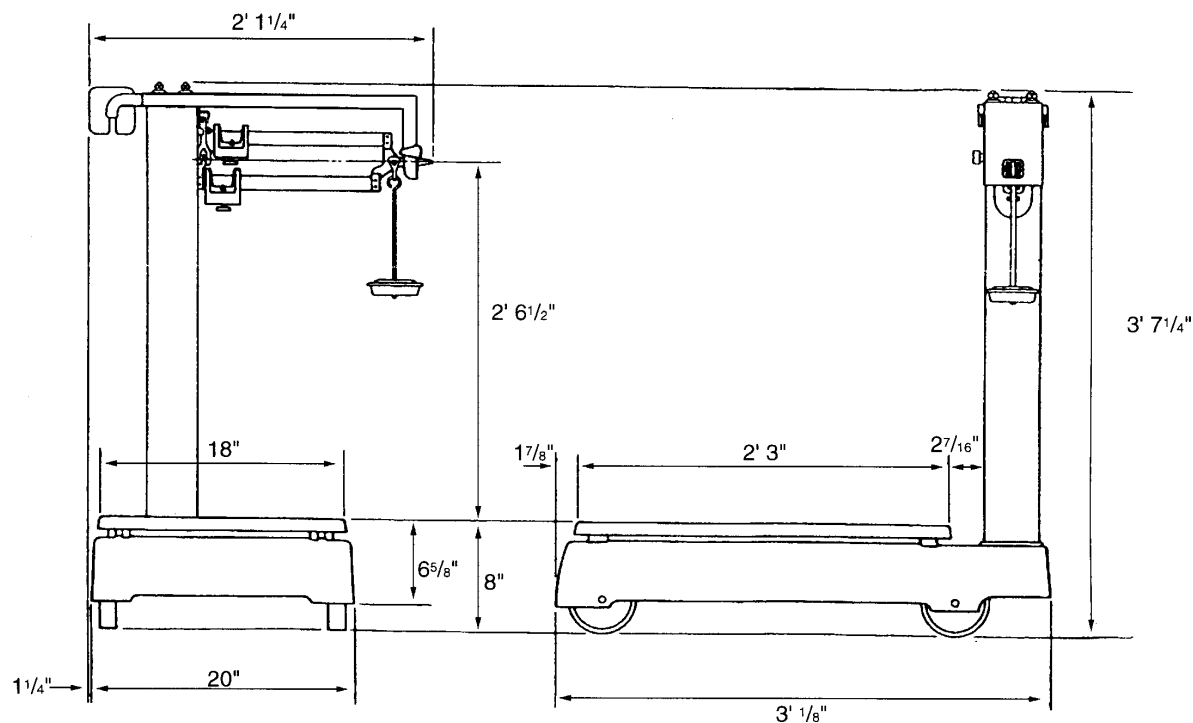
WEIGHT:

Approximately 200 lb

WARRANTY:

One year limited warranty

Please refer to page IR-3 in the Indicator section for IQ plus® 390-DC specifications.



Pipe Lever Scale



Measurement
Canada
Approved



These rugged tank and hopper scales combine the proven durability of a steel pipe lever system with a versatile and accurate precision load cell system. The encapsulated design prevents pivots from becoming unseated due to side loads and accidental impacts in heavy industrial use.

While standard capabilities are available, each scale can be custom built for your application. You choose the material, finish, and load cell type needed, then specify any of the nine critical dimensions needed from the keyed drawing on the reverse side of this page. We build to your specifications, and can even modify designs for suspended tank/hopper installations.

A variety of digital weight indicators and controllers are available for simple weight monitoring or multi-ingredient batching and process control in concrete, asphalt and fertilizer applications. All pipe lever models are legal for trade and carry type approvals in the United States.

Applications

- Process control in concrete, asphalt and fertilizer applications
- Simple weight monitoring
- Multi-ingredient batching

Standard Features

- Capacity range: 5,000 to 50,000 lb
- NTEP and Canadian type-approved models available
- RL20000 alloy steel load cell standard (prices includes load cell and ITCM load cell assembly)
- Mild steel construction, black paint finish
- Stainless steel, hermetically-sealed load cells available
- Custom-built-to-order

Options/Accessories

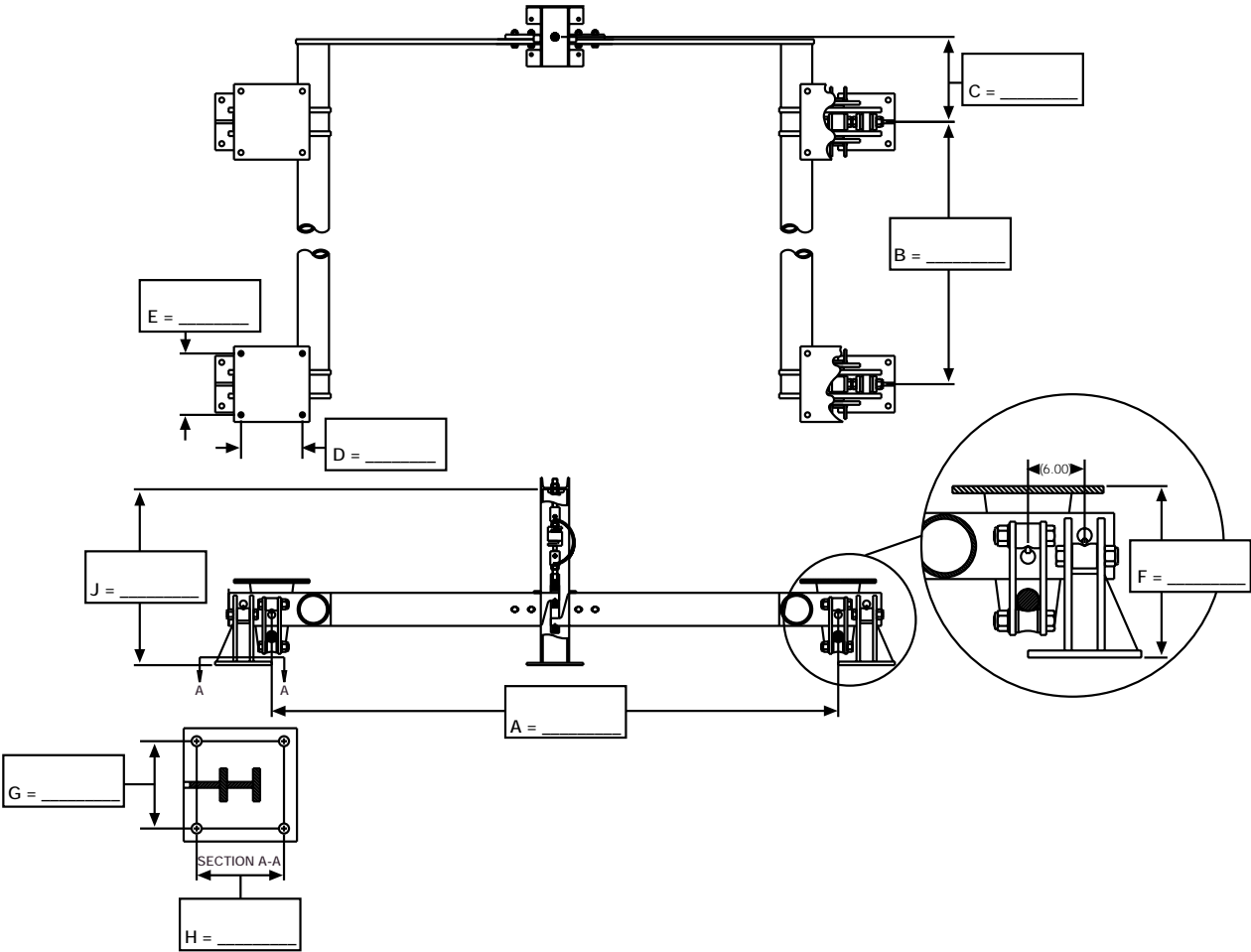
40817 Additional assembly instructions

Consult factory for optional protective finishes and colors



Standard and minimum lever length specifications. See back of sheet for line drawings that define dimensions.

↓	5K		10K		25K		30K		40/50K	
	Standard	Minimum	Standard	Minimum	Standard	Minimum	Standard	Minimum	Standard	Minimum
A	—	36.00"	—	48.00"	—	48.00"	—	60.00"	—	60.00"
B	—	36.00"	—	48.00"	—	48.00"	—	60.00"	—	60.00"
C	12.25"	4.00"	12.25"	4.50"	15.50"	7.00"	15.62"	7.00"	18.00"	7.00"
D	5.50"	5.50"	6.00"	6.00"	9.50"	8.75"	9.50"	8.75"	13.00"	12.00"
E	5.50"	5.50"	6.00"	6.00"	9.50"	8.75"	9.50"	8.75"	13.00"	12.00"
F	7.25"	7.25"	8.62"	8.62"	13.56"	13.56"	13.81"	13.81"	18.18"	18.18"
G	3.50"	3.00"	4.50"	3.50"	6.50"	4.75"	6.50"	4.75"	9.25"	6.50"
H	3.50"	3.00"	4.50"	3.50"	6.50"	4.75"	6.50"	4.75"	9.25"	6.50"
J	24.00"	22.00"	24.00"	24.00"	32.25"	32.25"	32.25"	32.25"	37.25"	37.25"
	A x B must be equal to or less than 25 square feet, or consult factory.		A x B must be equal to or less than 64 square feet, or consult factory.		A x B must be equal to or less than 100 square feet, or consult factory.		A x B must be equal to or less than 100 square feet, or consult factory.		A x B must be equal to or less than 100 square feet, or consult factory.	



Rice Lake Weighing Systems will design a pipe lever scale tailored to your needs. Provide us with the capacity and measurements as indicated above, and we will provide you with a quotation. (See front of page for the standard and minimum lever measurement specifications for each pipe lever system.)

A	
B	
C	
D	
E	
F	
G	
H	
J	

☐ 5K

☐ 10K

☐ 25K

☐ 30K

☐ 40K

☐ 50K

☐ Stainless steel hermetically-sealed load cell (specify model number)

☐ Mild steel load cell (specify model number)

Material Type: _____

Finish: _____

NTEP: ☐ Yes ☐ No

MS200 & MS202 Portable & Permanent Monorail Scales



PART #	DESCRIPTION
19740	MS200 Portable Monorail Scale (pictured)
19741	MS202 3/8" Permanent Monorail Scale
19742	MS202 1/2" Permanent Monorail Scale

The MS200 for portable use is a unique monorail scale that brings innovation to rail scale technology. Now portable electronic weighing accuracy and dependability are available virtually anywhere your rail system travels, from loading dock to refrigerated cooler. Requiring less than 41" of existing straight rail to install, the MS200 portable scale requires no cutting of your existing rail. Installation is quick and easy, requiring only a 7/16" wrench.

The MS202 is recommended for permanent installation applications. A 52" section of rail is supplied with this model, allowing ample length for cutting to fit your area. The 8" live rail is mounted flush and level with the trolley rail to make the weighing operation as simple as possible.

The MS200 and MS202 models are USDA approved, making them acceptable for use in federally-inspected meat processing plants.

Both the MS200 and MS202 models have a recessed area in the live rail to hold the trolley roller stable during the weighing operation.

Applications

- Portable or permanent installations
- Quick and easy installation

Standard Features

- Complete with the IQ plus® 800 digital weight indicator in a NEMA 4X stainless steel enclosure
- 8" long live rail designed to weigh one trolley at a time
- 750 lb x .5 lb resolution in both portable and permanent models
- Available for rail sizes 3/8" x 2 1/2" or 1/2" x 2 1/2"
- Requires less than 41" of straight rail to install (14" between rail hangers for permanent model)
- Zinc plated, steel construction
- High accuracy, stainless steel load cell
- 25' of load cell cable for flexible installation
- Slightly recessed live rail for the trolley roller provides stable weighments

Options/Accessories

NTEP Models available

- 19743 MS200HB-NTEP certified
MS200 with IQ plus® 800 indicator
- 19744 MS202HB-3/8", NTEP certified
MS202 with IQ plus® 800 indicator
- 19745 MS202HB-1/2", NTEP certified
MS202 with IQ plus® 800 indicator
- 59709 Completely portable battery-powered IQ600HB electronic indicator in stainless steel NEMA 4X enclosure, LCD
- 59659 Completely portable battery-powered IQ600HB electronic indicator in stainless steel NEMA 4X enclosure, LED
- 16984 Additional operating manual
- N/A 2 scales installed and connected to one indicator
Consult Factory



MS200/MS202 CONSTRUCTION:

Zinc-plated steel construction, stainless steel hardware

IQ plus 800 SPECIFICATIONS**LOAD CELL EXCITATION:**

10 ± 0.5 VDC, 16 x 350-ohm load cells (on up to 2 channels)

LOAD CELL CURRENT

460 mA maximum, (16 350-ohm load cells)

ANALOG SIGNAL INPUT RANGE:

0.6 mV/V - 3.9 mV/V

CONVERSION RATE AT FULL SCALE:

20/second, typical (standard resolution),

10/second, typical (high resolution)

Added channels reduce conversion rate per channel

RESOLUTION:

Selectable up to 100,000 displayed graduations

Selectable up to 740,000 graduations internal

OVERLOAD CAPACITY:

102%

COMMUNICATIONS:

Bidirectional RS-232, RS-232 simplex and 20 mA current loop

DIGITAL FILTERING:

Standard range software selectable: 1, 2, 4, 8, 16, 32, 64, 128

RATTLETRAP® high vibration control: 4, 8, 16, 32, 64, 128

POWER INPUT:

120 or 240 VAC at 25 watts at 50/60 Hz

SETPOINTS:

20 fully-programmable setpoint steps

DISPLAY:

Six decades, high intensity red LED, 0.6" (15.2mm)

ENCLOSURE:

NEMA 4X stainless steel, 10" L x 6" W x 7.75" H
(254mm x 152.4mm x 196.9mm)

LOAD CELL SPECIFICATIONS**LOAD CELL CONSTRUCTION:**

Stainless steel construction

EXCITATION:

10 VD

BRIDGE RESISTANCE:

350 ohms nominal

RATED OUTPUT:

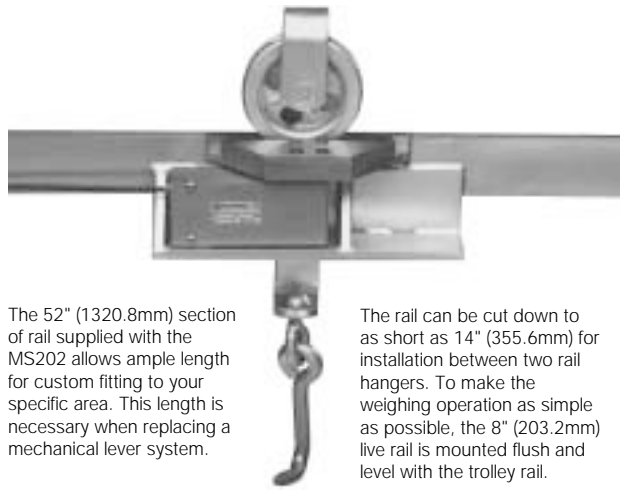
2 mV/V

NONLINEARITY:

0.03% full scale

MS202 PERMANENT MONORAIL SCALE

(Does not include trolley bar)



The 52" (1320.8mm) section of rail supplied with the MS202 allows ample length for custom fitting to your specific area. This length is necessary when replacing a mechanical lever system.

The rail can be cut down to as short as 14" (355.6mm) for installation between two rail hangers. To make the weighing operation as simple as possible, the 8" (203.2mm) live rail is mounted flush and level with the trolley rail.

MS200/MS202 DIMENSIONS