

Ishida AC-3000H Hanging Scale with Printer

NEW!
Product



PART # MODEL

52273 ... AC-3000H Dual Display

The AC-3000H hanging scale provides all the capabilities of a sophisticated price computing scale and printer, yet maintains incredibly simple operation for staff and customers. Perfect for weighing seafood, fruits, and vegetables, the AC-3000H is able to store up to 176 PLUs.

For maximum protection, it's housed in a stainless steel enclosure and comes with two weighing pans to accommodate either dry or wet products. The AC-3000H has an easy-to-read display that indicates weight and prices, and scrolls promotional messages. This versatile product also includes flexible label formatting, allowing store owners to cater to the specific needs of their customers. Store managers will be sold on the AC-3000H when they see its ability to expedite the checkout process.

Applications

- Produce Department
- Fish/Seafood Department

Standard Features

- Flexible, efficient label production
- 88 one-touch preset keys. Each key can be assigned two items using the convenient shift key, for a total of 176 presets
- Keyboard formats for presetting and programming can be easily switched using key sheets
- Dot matrix display
- Easy-to-read display, shows weights, prices, and is capable of displaying messages
- Stainless steel enclosure

Options/Accessories

- 52311 Operator's manual
- 52636 Programmer's manual

** Because store designs and applications can vary greatly, mounting hardware must be supplied by the distributor or store.*

Rear display



CAPACITY:

30 lb/0.01 lb (single)
(15 kg/0.005 kg) (single)

DISPLAY:

Unit price: 6 digits
Weight: 5 digits
Price: 7 digits
Dot display: 256 x 16 dots

PRINTING SPEED:

3.1"/sec (80mm/sec)

PRESET:

88 keys (176 presets)

MEMORY CAPACITY:

Standard: 256 KB

WEIGHT:

35.3 lbs (16 kg)

LABEL SIZE:

Flexible, max. width: 2.5" (64mm)

POWER SUPPLY:

AC115V/50/60 Hz

POWER CONSUMPTION:

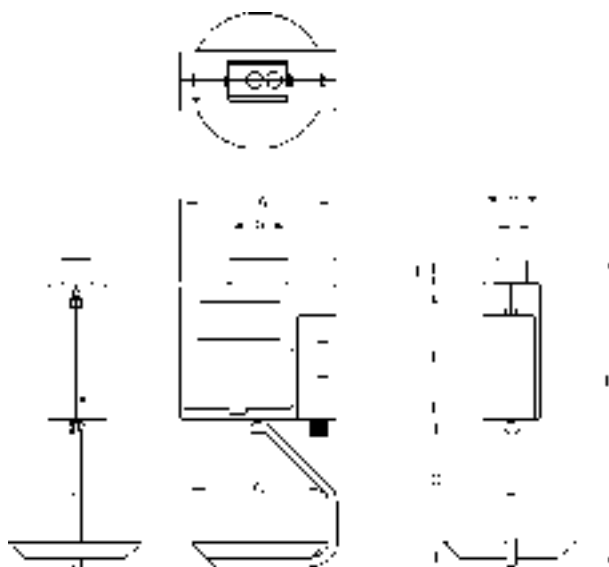
Stand-by: 50W
In operation: 100W

CLASSIFICATION:

NTEP certified, CC# 95-057A3

WARRANTY:

One-year limited warranty

**DIMENSIONS**

A: 16.22" (412mm)	F: 13.85" (352mm)
B: 5.98" (152mm)	G: 13.77" (350mm)
C: 14.05" (357mm)	H: 5.98" (152mm)
D: 30.17" (766mm)	I: 3.14" (80mm)
E: 2.55" (65mm)	