

# LABEL MATRIX for Windows®

Label Creation Software



PART #	DESCRIPTION
34676 .....	Label Matrix for Windows

Label Matrix provides advanced design, printing and database features that give you the flexibility to meet your most demanding labeling needs. Whether you need address labels for your small business or thousands of inventory labels for a multi-site warehousing plant, Label Matrix can do the job.

## Applications

- Shipping labels
- Bar code printing
- Point of sale
- Inventory control

## Standard Features

- True WYSIWYG design and editing
- Variable-size bar codes, text, lines, boxes and graphics
- Label design and printing wizards
- MDI (open multiple designs)
- Display cursor coordinates
- English and metric units of measure
- Tool tips and tabbed dialogs
- Data grid record preview
- Print preview
- Preview thumbnail label designs and descriptions before opening
- Undo/redo
- Zoom in/out
- Find and replace
- Cut, copy, move or paste single and multiple fields
- Rotate groups of images or entire label
- Resize or position objects using keyboard or mouse
- Image alignment tools
- Right mouse click shortcut menus
- Label designer grid
- Adjustable snap values
- Label stock display at print time
- Label directory tracking
- User-defined form types
- Dozens of "ready-to-print" samples and formats

## SYSTEM REQUIREMENTS:

### WINDOWS VERSION

IBM compatible 486 or better  
PC/MS-DOS 6.0 or above  
Win 3.1, Win 95 or Win NT  
8 MB RAM (16 recommended)  
Windows-compatible monitor and graphics card

### GRAPHICS

Import graphic formats including  
BMP DIB DCX  
GIF IMG JPG  
PCX TGA TIF

### DATABASE SUPPORT

Internal database utility  
Database wizard  
32-bit Microsoft ODBC support  
SQL query capability  
Ability to view records "live" on design screen  
Multiple database support  
Sequential access to database records  
Keyed access using Primary or Primary/Secondary key  
Import files format from:  
- ASC11 (comma, tab and quote delimited)  
- Access  
- DBF  
- Excel  
- FoxPro

### DATA ORIGINS

Fixed/Constant  
Keyboard entry at print time  
Import from database  
Counter/serial numbers  
Customizable date and time stamp  
Combination origin for advanced math, string and logical functions

### TEXT

Windows TrueType fonts  
Paragraph text entry and auto text wrap  
Set non-printing fields  
Align left, right, top, bottom, horizontal and vertical  
Stretch or rotate in any direction  
Vertical, horizontal, and diagonal lines  
Force straight lines with mouse  
Set line length and thickness  
Reversed boxes and text  
Set box width, height and frame thickness

### 2-D BAR CODES SUPPORTED

PDF 417  
Data Matrix  
Maxi Code  
Code 49  
Code 16K

### BAR CODE FORMATS SUPPORTED

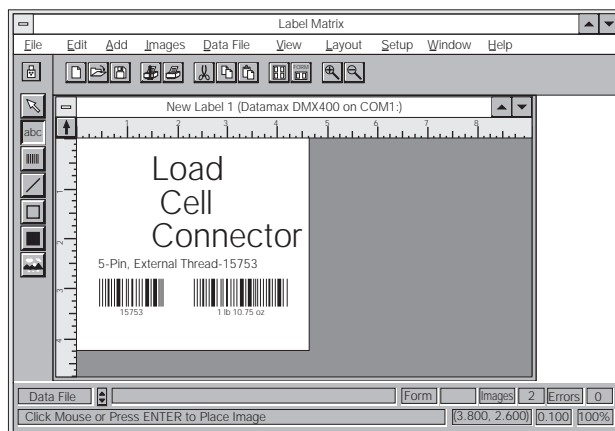
UPC-A and UPC-E  
UPC+2 and +5  
EAN-8 and -13  
Ean +2 and +5  
Code 39 and extended 39  
Code 93 and extended 93  
UCC/EAN -128  
Code 128 (Auto A, B, or C)  
Codabar  
HIBC  
Interleaved 2 of 5  
MSI Plessey  
Zip +4 Postnet

### LANGUAGES

European Edition (includes Dutch, English, French, German, Italian, and Spanish with complete German manual and help files) International Edition (includes English, French and Spanish)

### PRINTERS SUPPORTED

Astro-med	Eltron	OTC
ATC	Epson	Printonix
AT&T	FACIT	Ring
Avery	Genicom	Rice Lake Weighing Systems
Axiom	Hewlett Packard	RJS
Brady	Intermec	SATO
C.ITOH	Kentek	Standard Register
CAB	Kroy	Taiwan Semiconductor
C.ITOH	Metro	TEC
Century	Microcom	Telxon
Codewriter	Monarch	UBI
ComNet	NCI/Weightronix	Unimark
Comtec	NEC	Weber
Datamax	Novexx	Willett
DH Cognitive	Opticon	Zebra
Dura		



Windows and DOS are trademarks of Microsoft Corporation.

# TekLynx LabelView Pro/Gold

Bar Code Label Software



PART #	DESCRIPTION
43900 .....	LabelView Pro for Windows®
43905 .....	LabelView Gold for Windows®

LabelView is a full-featured, easy-to-use bar code label design software package. Whether you're a novice or an expert user, you'll appreciate the power and simplicity it offers.

LabelView supports over 25 bar codes for virtually any industry, including two-dimensional symbologies such as PDF 417. Serial numbers can be incremented or decremented by any amount, and may appear as either bar codes or text. LabelView can also remember the last number used and continue where it left off.

For added label appeal, True Type fonts can be added to any Windows printer as well as any direct thermal/thermal transfer printer. LabelView also includes a powerful paragraph feature which is useful for displaying multi-line text such as lists of ingredients. In addition, word wrap, automatic centering, and left/right justification allow high-quality label appearance. Color graphics in PCX, BMP, TIFF, JPEG, GIF and TGA are supported as well.

To help with inventory control, LabelView keeps track of the available quantities of different label stock. Quantities are automatically adjusted when labels are printed, and when stock gets below the defined re-order point, users are notified. For additional control, LabelView includes a full-featured database manager that lets the user create, edit and query their own databases. The database works in any ODBC data format including Access, Excel, Lotus, and ASCII.

## Applications

- Point-of-sale labels
- Bar code printing
- Shipping labels
- Inventory control labels

## Standard Features

### LabelView Pro:

- True Type fonts easily added
- Supports color PCX, BMP, TIFF, JPEG, GIF and TGA graphical formats
- Generate serial numbers
- Date and time stamps
- Paragraph feature
- Database merge
- Print over 25 bar codes for virtually any industry
- Password security
- Use data from any ODBC data format including Access, Excel, Lotus, and ASCII
- Open label preview
- Preview pictures
- Database editor
- Batch printing

### LabelView Gold has all the above features, plus:

- Third-party integration using DDE, Command file, Datawatch and ComWatch
- Audit reporting

## Options/Accessories

### LabelView Gold:

- 43907 ..... 3-user network version for Windows®
- 43908 ..... 5-user network version for Windows®
- 43906 ..... Print-only version

## SYSTEM REQUIREMENTS:

IBM 486 or compatible, 8 megabytes of RAM 10 megabytes of hard disk space, 1 parallel and serial port

## GRAPHICS:

Supports color, PCX, BMP, TIFF, JPEG, GIF & TGA graphical formats. Scale to any size, rotate in 4 directions

## DATABASE MERGE:

Batch printing: print all records in a database, a range of records, or a single record; sort on any field in a database, database picture, and/or paragraph files

## DATABASE MANAGER:

Create/modify databases, (field types) (character, numeric, date, logical, memo) search for records, index on any field, import/export to ASCII or DBF, DBASE III, IV compatible, edit ODBC Data

## TEXT:

Print True Type fonts on any supported printer, rotate in 4 directions, reverse printing (white on black), increment/decrement, justification (left, right, center) move, copy, delete groups of fields, non-printing fields.

Multiple data sources: fixed, print-time entry, database merge, serial numbers, date stamp, sell-by-date, time stamp, linked/copied from other fields

## BAR CODES:

Set bar width ratio, rotate in 4 directions

Multiple data sources: fixed, print-time entry, database merge, serial numbers, linked/copied from other fields

### Symbologies:

UPC-A  
UPC-E, UPC +2 and +5  
EAN-8, EAN-13  
Code 39, Code 39 mod 43  
Code 93 Codabar  
Int. 2 of 5, Int. 2 of 5 mod 10  
Code 128-A, B, C  
UCC 128, EAN 128  
Postnet

### 2-D Symbologies:

PDF 417  
Maxicode  
DataMatrix

## PASSWORDS:

User names, user passwords

Rights: design labels, print labels, modify serial numbers, use database editor, use text editor, modify label inventory

## LABEL INVENTORY CONTROL:

Tracks quantity on-hand  
Definable re-order points  
Low stock level warning messages

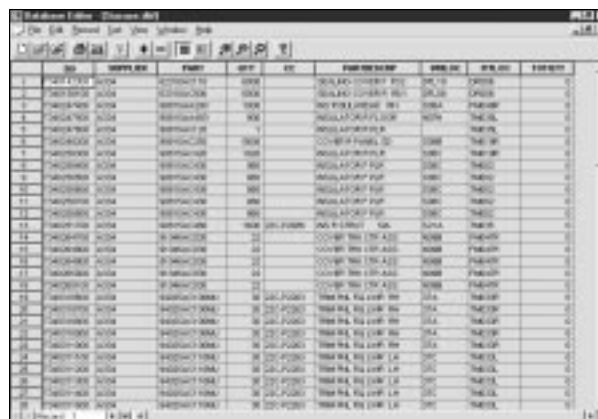
## LANGUAGES:

English, French, Spanish, Italian, German, Dutch, Chinese, Korean, and Portuguese. User translatable.

## SUPPORTED PRINTERS:

Astro-Med, Automated Packaging, Avery Dennison, C.I.TOH, Citizen, Code Writer, Cognitive Solutions, Comstar, Comtec, Datamax, Datasouth, DH Technologies, Eltron, Esselte Meto, Fuji, Facit, Genicom, Identco, Intermec, Microcom, Monarch, Novexx, Printronix, Ring, RJS, SATO, TEC, UBI, and Zebra

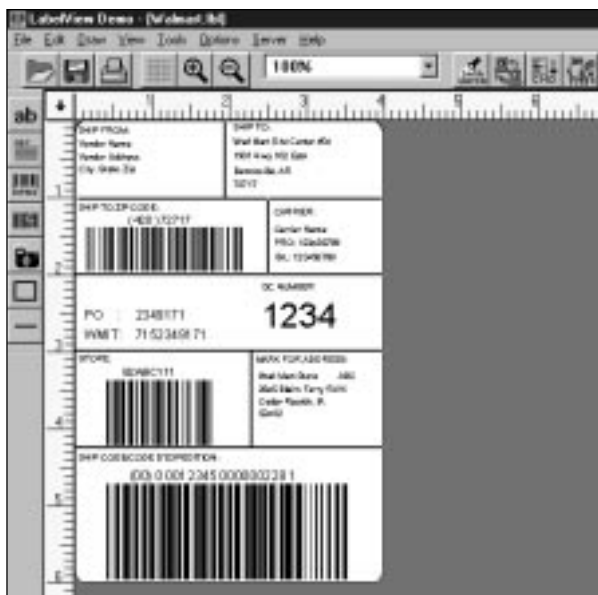
*LabelView supports any laser and dot-matrix Windows printer driver.*



Database Editor



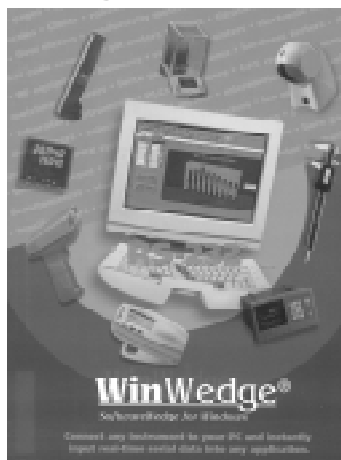
Open label preview



Compliance label sample

# WinWedge® TAL Software

Bar Code Label Software

**NEW!**  
**Product**


PART #	DESCRIPTION
43966 .....	WinWedge® TAL Software

## Applications

- Laboratory balances
- Industrial
- Quality and process control

## Standard Features

- Input scale or instrument data directly into Excel, Access, statistical software, LIMS, MMIs, any Window 3. x, 95, 98 or NT application
- Transfers serial data quickly, accurately, and formatted to your exact specifications
- Powerful DDE support in Windows
- Extremely easy to set-up and use
- No programming required

WinWedge is easy-to-use data collection software, compatible with Excel, Access, statistical software, LIMS, MMIs...any Window 3. x, 95, 98, or NT application. WinWedge transfers serial data quickly, accurately, and formatted to your exact specifications, eliminating slow, error prone manual entry. In addition, WinWedge offers simplistic menu-driven set-up configurations with no programming required.

Data can be transferred either by sending keystrokes to the application's window or by passing the data through DDE (Dynamic Data Exchange) conversations. WinWedge is also able to collect data on any serial port (RS232, RS422 or RS485) and even multiple serial ports simultaneously.

Version 1.2 is designed to work with devices such as electronic scales, bar code readers, calipers, and gages, or any other device that transmits simple text data—either single field data or comma delimited data. WinWedge v1.2 also supports basic prompting and control of serial devices, selectable input buffer size (up to 32K), date and time stamps, and baud rates up to 19,200 baud.

**SYSTEM REQUIREMENTS:**

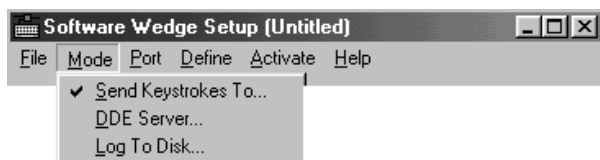
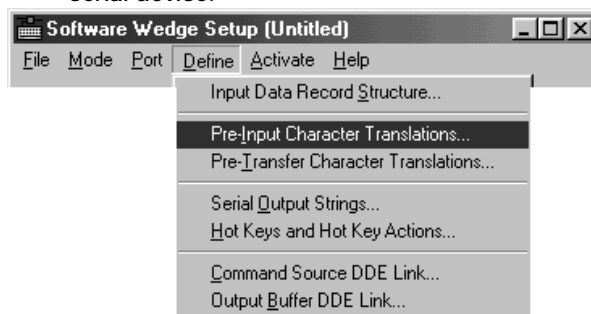
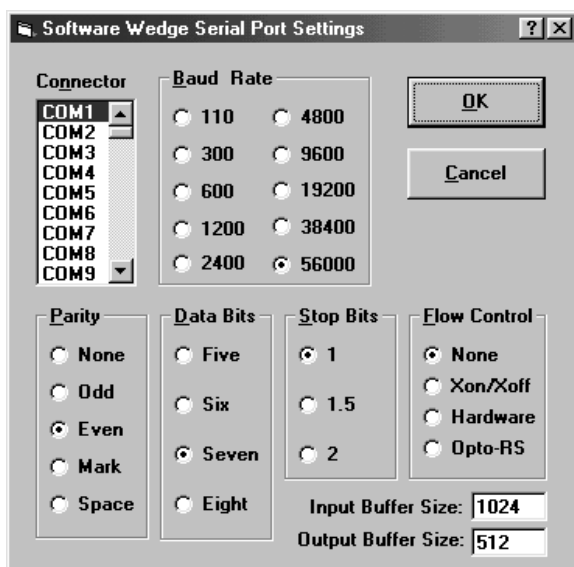
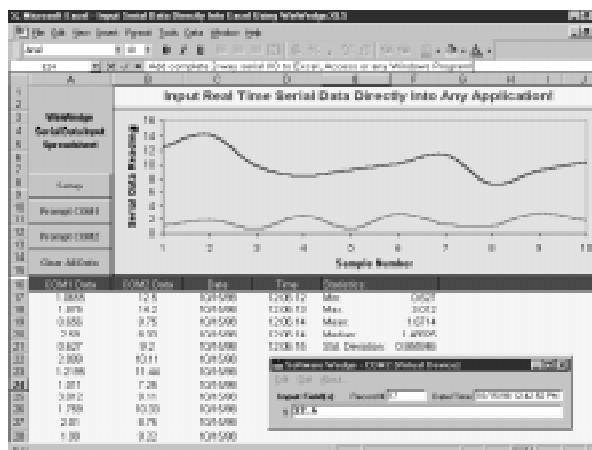
Windows 95/98/NT (Windows 3.1 or higher)  
 IBM 486 or compatible, 8 megabytes of RAM  
 10 megabytes of hard disk space

**COMMUNICATIONS:**

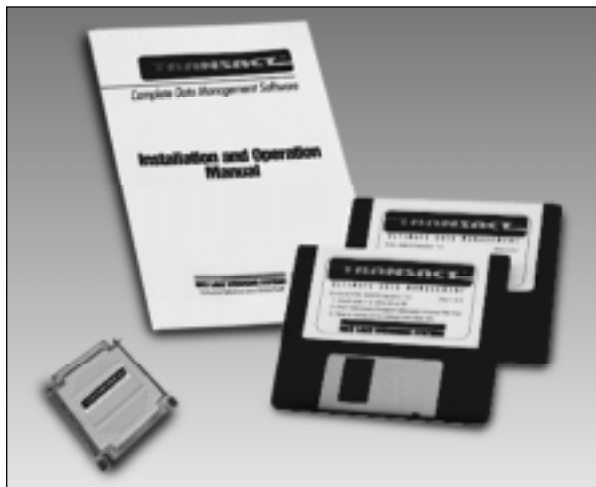
Windows is able to collect data on any serial port (RS232, RS422, or RS485) and even multiple serial ports simultaneously

**SOFTWARE SUPPORT:**

Rice Lake Weighing Systems offers field software support for our software packages. Contact our Service Department for software support. Software support is a chargeable service.

**1. Select how you want the data collected:****2. Choose the communication parameters for your serial device:****3. Define how you want the serial data to be parsed filtered and translated:****4. Activate WinWedge and watch your serial data "pop" into your application:**

# TransAct®/TransAct® Plus 3.0 Truck Data Management Software



PART #	DESCRIPTION
43898 .....	TransAct Version 3.0*
43899 .....	TransAct Plus Version 3.0
50268 .....	TransAct Version 3.0 (New Jersey tare requirements)
50269 .....	TransAct Plus Version 3.0 (New Jersey tare requirements)
44436 .....	TransAct Demo Package 3.0

\* Now includes Job Table.



With TransAct 3.0 you get the best of both worlds! Our latest version not only provides the same landfill management capabilities of 2.0, but also includes new features that enable you to specifically target the aggregate, forestry, and recycling industries.

Designed for scale operators with little computer experience and office managers who require quick and accurate information, TransAct and TransAct Plus feature intuitive menus, detailed transaction information, enhanced search capabilities, and configurable reports.

These versatile programs allow two-scale operation and multiple transactions per ticket. Aging reports show both current and extended balances, and credit weight limits automatically track weight per transaction in relation to the set limit.

TransAct and TransAct Plus also offer powerful features such as unlimited product, truck, and customer fields, full reporting with automatic accounting and invoicing, configurable ticket generation, superior data integrity, and much more. The optional pcANYWHERE package allows for long distance on-line product support. Also allows for easy transfer of transaction information to remote sites.

## Applications

- Landfill and recycling
- Sand and gravel
- Solid waste management
- Forestry, mining

## Standard Features

### TransAct/TransAct Plus:

- Intuitive menu-driven program
- Powerful database with unlimited number of products, customers, weight containers, trucks, and trailers
- Configurable product rates
- Supports bar code, mag strip, or RF reader input for automatic transactions
- Report to screen or printer, or export by tab-delimited text format
- Three configurable tares
- Predetermined, keyboard and automatic tare entry
- Four configurable category tables
- Unlimited configurable ticket formats
- Automatic ticket processing
- Permit fields
- One-or two-scale operation
- Multiple transactions per ticket
- Networkable (Novell)
- Expandable reporting features
- Transaction importing/exporting for long distance transfers in non-networking applications
- Credit weight limits
- NTEP certified
- Job Table for contract purchases

### TransAct Plus:

- Full accounting capabilities, including financial, payable, receivable and tracking
- Aging report showing current and extended balance 30, 60, 90 days
- Prints customer invoices with detailed transaction information
- Diverse reports by account, revenue, tonnage, material, transaction, customer, date and more
- Job table for contract purchases

## Options/Accessories

15552 ..... Custom RS-232 interface cable

*Custom cables are designed to interface with your specific equipment. Please specify equipment model number and connector type. Standard cable length is 5' (1.5m). Additional charge for cables over 5' (1.5m) long.*

42745 ..... pcANYWHERE for Windows 95, 3.1, host and remote version

50270 ..... Additional operating manual



## SYSTEM REQUIREMENTS:

Windows 95/98/NT (Windows 3.1 or higher)  
 NOTE: TransAct/TransAct Plus will not run on DOS alone.  
 Pentium processor  
 16 megabytes (minimum) of RAM

## DATABASES:

Virtually unlimited with user-definable categories.  
 Automatic journaling with automatic rebuild after crash or power interrupt.

## COMMUNICATIONS:

Support for 2 printers with selectable drivers for most popular printers.

## TRANSACTION TICKET:

Configurable weigh-in and weigh-out ticket formats, complete selection of variables and data types.

## REPORTS:

Full reporting capabilities by account, vehicle, material, hauler, area, ticket, truck, container, trailer, or date.  
 Ages report 30, 60, 90 days.

## EXPORT DATA:

Reports can be exported via tab-delimited file format.  
 Export/Import function for transferring transaction data in non-networking applications.

## TRANSACTION CALCULATIONS:

Definable product rates, charges, taxes, and customer discounts.  
 Configurable percentage weight reductions for moisture and dockage.

## ACCOUNTING:

Full accounting capabilities

- Accounts Payable
- Accounts Receivable
- Balance/Reconciliation

## SOFTWARE SUPPORT:

Rice Lake Weighing Systems offers field software support for TransAct/TransAct Plus. Contact our Service Department for software support. Software support is a chargeable service.

## APPROVALS:

NTEP certified CC# 97-034

## Version 3.0 Added Features:

- Ticket voiding
- Inventory tracking
- Rate category - multiple rate tables
- Expanded reporting capability - detail, summary, monthly
- Gross mode only weigh option
- Reduced pricing for Job Table
- Job/order table enhancements - by weight, yards, count
- Truck history - last transaction - daily totals
- Aging added to statement (TransAct Plus)
- Transaction posting - can post transactions from a scale PC to a billing PC
- Easy Cash feature - allows scale operators to automatically record cash transactions
- Cash account rounding - can round cash accounts to nearest penny, nickel, quarter, etc.
- Supports New Jersey tare requirements
- Statement and Ticket message capability

Customer Account Table

Truck/Container Cash Transaction

Dual Scale Weigh Form

Windows is a trademark of Microsoft Corporation.  
 pcANYWHERE is a trademark of Symantec Corporation.