

RoughDeck™ Rough-n-Ready System Floor Scale / Indicator Package



Measurement
Canada
Approved

Choice of 3 Quality Indicators



(SEE CHART ON BACK OF PAGE FOR PART #'S)

The Rough-n-Ready System is designed and built for high-accuracy industrial applications. By utilizing a rigid 6-inch steel channel frame under a painted steel diamond treadplate deck, the Rough-n-Ready System offers the ultimate in durability. Combined with your choice of three different indicators, this NTEP-certified RoughDeck package provides accuracy, versatility and dependability for all of your shipping/receiving and manufacturing applications.

This product package is available with the IQ plus 355 digital weight indicator for 5-button operation in simple weighing application. If getting power to the scale is a problem, your solution is the handy IQ plus 390-DC featuring battery operation and a simple five-button keypad. For more advanced applications, use the IQ plus 590-DC featuring battery operation and a full numeric keypad for easy configuration.

Configured, corner-trimmed and calibrated for 5000 divisions, this impressive system comes complete with an indicator tilt stand and 20 ft of SURVIVOR EL147HE 6-conductor hostile environment load cell cable.

Available options include a stand-alone indicator pedestal, floor anchor plates, access ramps and pit frames.

Applications

- Legal-For-Trade
- Shipping and receiving
- Manufacturing
- General purpose weighing

Standard Features

- NEMA 4 aluminum J-box
- Welded seal load cells
- All-inclusive **FIVE YEAR** limited warranty on RoughDeck only
- Heavy-duty industrial design
- Rugged diamond safety treadplate deck
- Rigid structural steel channel frame
- Four adjustable stainless steel SUREFOOT™ support feet
- Signal trim summing board
- Threaded eyebolt holes for easy lifting
- 20 ft SURVIVOR® EL147HE hostile environment load cell cable

Options/Accessories

RoughDeck HP Floor Scale:

- 18777 Floor anchor plates, mild steel (set of two)
- 18778 Floor anchor plates, stainless steel (set of two)
- 18803 Four drilled deck holes for scale height adjustment
- 19352 Floor stand for indicator, 36.3" high, suitable for IQ plus® 310A, IQ plus® 355, IQ plus® 390, IQ plus® 590, IQ 700, IQ plus® 800, IQ plus® 510, IQ plus® 710, UMC444 and UMC555

66662 Additional operating manual

Access ramps and pit frames available. See price page FS-5 (P)

IQ plus 355, IQ plus 390-DC, and IQ plus 590-DC Indicator:

43381 Analog output: selectable 0-10V, 4-20 mA, IQ plus 355 only

52948 Panel mount kit, IQ plus 355 only

46030 Revolution™ Scale Software

51980 Additional operating manual, IQ plus 355

43544 Additional operating manual, IQ plus 390-DC

51778 Additional operating manual, IQ plus 590-DC

Consult factory for Canadian Legal-For-Trade packages

ROUGHDECK HP FLOOR SCALE

LOAD CELL CAPACITY:

2500 lb on 5000 lb bases,
4000 lb on 10,000 lb bases

END LOAD CAPACITY:

100% full scale 5000 lb bases
80% on 10,000 lb base

APPROVALS:

NTEP-certified per H-44 at 5,000 Divisions,
UL & C-UL listed, Class III, CC #92-001A5, Measurement
Canada Approved, AM-4827, HC Series, Consult factory for
canadian part numbers

mV/V OUTPUT:

1.50 - 1.87 mV/V nominal

CABLE LENGTH:

20 ft (6.1 m)

HEIGHT:

3.25" (82.6mm) min

WARRANTY:

Five year limited warranty

ROUGHDECK ROUGH-N-READY SYSTEM

PACKAGE INCLUDES: IQ plus® 355, IQ plus® 390-DC,
or IQ plus® 590-DC indicator, RoughDeck 4' x 4' floor scale,
20 ft of hostile environment load cell cable and quick disconnect.

Capacity

PART#	INDICATOR	LB (KG)	EST. SHIP WEIGHT
53423 IQ plus 590, 115 VAC	5000 lb (2500 kg)	405 lb
53424 IQ plus 390, 115 VAC	5000 lb (2500 kg)	405 lb
53425 IQ plus 355, 115 VAC	5000 lb (2500 kg)	405 lb
53429 IQ plus 590, 230 VAC	5000 lb (2500 kg)	405 lb
53430 IQ plus 390, 230 VAC	5000 lb (2500 kg)	405 lb
53431 IQ plus 355, 230 VAC	5000 lb (2500 kg)	405 lb
53420 IQ plus 590, 115 VAC	10,000 lb (5000 kg)	405 lb
53421 IQ plus 390, 115 VAC	10,000 lb (5000 kg)	405 lb
53422 IQ plus 355, 115 VAC	10,000 lb (5000 kg)	405 lb
53426 IQ plus 590, 230 VAC	10,000 lb (5000 kg)	405 lb
53427 IQ plus 390, 230 VAC	10,000 lb (5000 kg)	405 lb
53428 IQ plus 355, 230 VAC	10,000 lb (5000 kg)	405 lb

Access ramps and pit frames available.
See price page FS-5 (P)

IQ plus 355

Standard Features

- Large .8" (20.3mm) LED Display
- Configurable analog to digital measurement rate
- Power for eight 350Ω load cells or sixteen 700Ω load cells
- Primary/secondary units configuration: lb, kg, ounces, short tons, metric tons, grams, or none
- NEMA 4X/IP66 stainless steel washdown enclosure
- 5-button operation
- 2 independent communication ports: (1) full duplex, (1) unidirectional or active 20 mA current loop
- Standardized EDP command sets
- Programmable ticket formats up to two 300-character printouts
- Full front-panel digital calibration and configuration
- Universal mounting stand
- Three-stage digital filtering
- Two year limited warranty

ANOTHER **REVOLUTION** SOLUTION



Pending

Measurement
Canada
Approved

IQ plus 390-DC

Standard Features

- NEMA 4X/IP66-rated stainless steel enclosure
- Large 1" (24.5mm), six-digit LCD display
- 6-button operation
- Power for four 350Ω load cells or eight 700Ω load cells
- Configurable units multiplier
- Supports 4- and 6-wire load cell connections
- EDP port for full duplex, RS-232 communications
- Powered by 6 "C" cell alkaline batteries for complete portability (batteries not included)
- AC adapter for 115 or 230 VAC power
- Configurable standby mode that saves battery life
- RATTLETRAP® three-stage digital filtering
- Piece count mode
- Two year limited warranty

ANOTHER **REVOLUTION** SOLUTION



Measurement
Canada
Approved

IQ plus 590-DC

Standard Features

- Full numeric keypad
- Keyboard entry of piece weight, tare weight, calibration, and sample size
- Display tare button
- Powered by 6 "C" cell alkaline batteries for complete portability (batteries not included)
- Revolution™ Scaleware support
- Three 300-character print ticket formats
- Power for four 350Ω load cells or eight 700Ω load cells
- Supports 4- and 6-wire load cell connections
- EDP port for full duplex, RS-232 communications
- NEMA 4X/IP66-rated stainless steel enclosure
- Large 1" (24.5mm), six-digit LCD display
- AC adapter for 115 or 230 VAC power
- Configurable standby mode to prolong battery life
- RATTLETRAP® three-stage digital filtering
- Configurable units multiplier
- Configurable analog to digital measurement rate
- Self-resetting thermal fuse
- Two year limited warranty

ANOTHER **REVOLUTION** SOLUTION



Measurement
Canada
Approved

Please refer to indicator section of this catalog for complete indicator specifications

RoughDeck™ HP

High-Precision Structural Steel Low-Profile Floor Scale

**All-Inclusive
5 YEAR!
LIMITED WARRANTY**

**The BEST floor scale
in the business is now
even BETTER!**

Product Enhancements!

- NEMA 4 aluminum J-box
- Welded seal load cells
- Quick disconnect cable at the J-box
- All-inclusive **FIVE YEAR** limited warranty



Measurement
Canada
Approved**



(SEE CHART ON BACK OF PAGE FOR PART #s)

The RoughDeck HP's best-in-class features have been enhanced to deliver even more reliability and higher performance than ever before.

The RoughDeck HP's new NEMA 4 aluminum junction box is protected from forks and industrial abuse by a 6" structural steel channel frame and diamond treadplate safety deck. The J-box is also mounted as a handy slide-out tray that eases setup and service access. Cables include sturdy cord grips and quick disconnect for added convenience. In addition, all load cell cables are enclosed in conduit, alleviating danger of rough handling. The RoughDeck HP incorporates the new welded seal RL3000W load cell for increased protection from the elements. All load cells are recessed within the channel for protection on all sides, while maintaining easy access for leveling. What's more, the RoughDeck HP is backed by an all-inclusive five year limited warranty!

Available in 1000 to 30,000 lb capacities, the RoughDeck HP is the industry leader for high-precision weighing in Legal-for-Trade applications.

Applications

- Legal-For-Trade Applications
- High accuracy requirements

Standard Features

NEW!

- Four NTEP-certified alloy steel, welded seal, shear beam load cells
- Unique side-entry "integral" aluminum J-box with quick disconnect
- Five year limited warranty on all parts
- Heavy-duty industrial design
- Rugged diamond safety treadplate deck
- Rigid structural steel channel frame
- Four adjustable stainless steel SUREFOOT™ support feet
- Signal trim summing board
- Threaded eyebolt holes for easy lifting
- Four corner overload stops (Canadian versions only)
- Level bubble (Canadian versions only)
- 20 ft SURVIVOR® EL147HE hostile environment load cell cable

Options/Accessories

- 18777 Floor anchor plates, mild steel (set of two)
- 18778 Floor anchor plates, stainless steel (set of two)
- 18803 Four drilled deck holes for scale height adjustment
- 19352 Floor stand for indicator, 36.3" high, suitable for IQ plus® 310A, IQ plus® 355, IQ plus® 390, IQ plus® 590, IQ 700, IQ plus® 800, IQ plus® 510, IQ plus® 710, UMC444 and UMC555
- 66662 Additional operating manual
- MS-1* Mild steel deck with stainless steel load cells, junction box, and hardware
- MS-2* Mild steel deck with welded seal stainless steel load cells, junction box, and hardware
- MS-3 Mild steel deck with Sensortronics Factory Mutual-Approved load cells, junction box, and hardware (Contact Intrinsically Safe Specialist for WS900 system approved load cells)
- MS-4 Mild steel deck with Sensortronics Factory Mutual-Approved junction box and load cells
- MS-5* Mild steel deck with Sensortronics Factory Mutual-Approved stainless steel load cells (Contact Intrinsically Safe Specialist for WS900 system approved load cells)
- MS-6* Mild steel deck with Sensortronics Factory Mutual-Approved junction box and stainless steel load cells
- MS-8* Mild steel deck with Sensortronics Factory Mutual-Approved junction box and HE load cells
- MS-9 Mild steel deck with NEMA 4X stainless steel junction box
- MS-11 Top access J-box
- MS-12 Forklift channel options (up to 5' x 7' 10K, accomodates fork tines no larger than 5" W x 2" H)

Access ramps and pit frames available. See price page FS-5 (P)

* Load cell and junction box substitution.

** RoughDeck HP-H scales are not Measurement Canada Approved.

APPROVALS:

NTEP certified, CC# 92-001A5
Class III, 5000d, Measurement Canada Approved, AM-4827,
HC Series

END LOAD CAPACITY

100% full scale to 20,000 lbs
66% full scale at 33,000 lbs

mV/V OUTPUT:

1.50-1.87
mV/V nominal

CABLE LENGTH:

20 ft (6.1m) (for connecting j-box to indicator)

WARRANTY:

Five year limited warranty

ROUGHDECK HP BASES

U.S NTEP PART #	SIZE (W x L x H)	CAPACITY	SHIP WT
66320*	3' x 3' x 3.5"	1000 lb (500 kg)	232 lb
66319*	4' x 4' x 3.5"	1000 lb (500 kg)	375 lb
66318†	2.5' x 2.5' x 3.5"	2000 lb (1000 kg)	173 lb
66317†	3' x 3' x 3.5"	2000 lb (1000 kg)	232 lb
66316	4' x 4' x 3.5"	5000 lb (2500 kg)	375 lb
66315	4' x 4' x 3.5"	10,000 lb (5000 kg)	375 lb
66314	4' x 5' x 3.5"	5000 lb (2500 kg)	437 lb
66313	4' x 5' x 3.5"	10,000 lb (5000 kg)	567 lb
66312	4' x 6' x 3.5"	5000 lb (2500 kg)	510 lb
66311	4' x 6' x 3.5"	10,000 lb (5000 kg)	656 lb
66310	5' x 5' x 3.5"	5000 lb (2500 kg)	541 lb
66309	5' x 5' x 3.5"	10,000 lb (5000 kg)	696 lb
66308	5' x 6' x 3.5"	5000 lb (2500 kg)	646 lb
66307	5' x 6' x 3.5"	10,000 lb (5000 kg)	821 lb
66306	5' x 7' x 3.5"	5000 lb (2500 kg)	734 lb
66305	5' x 7' x 3.5"	10,000 lb (5000 kg)	929 lb

CANADIAN WEIGHTS & MEASURES CERTIFIED**

66464	3' x 3' x 3.5"	1000 kg	232 lb
66465	4' x 4' x 3.5"	2500 kg	375 lb
66466	4' x 4' x 3.5"	5000 kg	375 lb
66467	5' x 5' x 3.5"	2500 kg	541 lb
66468	5' x 5' x 3.5"	5000 kg	696 lb
66469	5' x 7' x 3.5"	2500 kg	934 lb
66470	5' x 7' x 3.5"	5000 kg	929 lb

* Special load cells and feet to achieve 5000d NTEP certification, please consult factory for additional pricing.

** Includes four corner overload stops and level bubble.

† Not recommended for use with pallet jacks.

Options/Accessories and Access Ramps and Pit Frames available. See price pages FS-2 (P) and FS-5 (P)

ROUGHDECK HP-H HEAVY CAPACITY*** (MILD STEEL ONLY)

U.S NTEP PART #	SIZE (W x L x H)	CAPACITY	SHIP WT
66474	4' x 4' x 4"	20,000 lb (10,000 kg)	601 lb
66475	4' x 5' x 4"	20,000 lb (10,000 kg)	775 lb
66476	4' x 6' x 4"	20,000 lb (10,000 kg)	926 lb
66477	4' x 7' x 4"	20,000 lb (10,000 kg)	1135 lb
66478	5' x 5' x 4"	20,000 lb (10,000 kg)	926 lb
66479	5' x 6' x 4"	20,000 lb (10,000 kg)	1104 lb
66480	5' x 7' x 4"	20,000 lb (10,000 kg)	1377 lb
66481	6' x 6' x 4"	20,000 lb (10,000 kg)	1319 lb
66482	6' x 8' x 4"	20,000 lb (10,000 kg)	1861 lb
66483	7' x 9' x 4"	20,000 lb (10,000 kg)	2408 lb
66484	7' x 10' x 4"	20,000 lb (10,000 kg)	2959 lb
66485	8' x 10' x 4"	20,000 lb (10,000 kg)	3108 lb
66486	4' x 4' x 4"	30,000 lb (15,000 kg)	675 lb
66487	4' x 5' x 4"	30,000 lb (15,000 kg)	839 lb
66488	4' x 6' x 4"	30,000 lb (15,000 kg)	1071 lb
66489	4' x 7' x 4"	30,000 lb (15,000 kg)	1200 lb
66490	5' x 5' x 4"	30,000 lb (15,000 kg)	1021 lb
66491	5' x 7' x 4"	30,000 lb (15,000 kg)	1448 lb
66492	6' x 6' x 4"	30,000 lb (15,000 kg)	1438 lb
66493	7' x 10' x 4"	30,000 lb (15,000 kg)	3372 lb
66494	8' x 10' x 4"	30,000 lb (15,000 kg)	3699 lb

*** NOTE: RoughDeck HP-H scales are not Measurement Canada Approved.

Heavy Capacity Options/Accessories and Access Ramps and Pit Frames available.
See price pages FS-3 (P) and FS-4 (P)

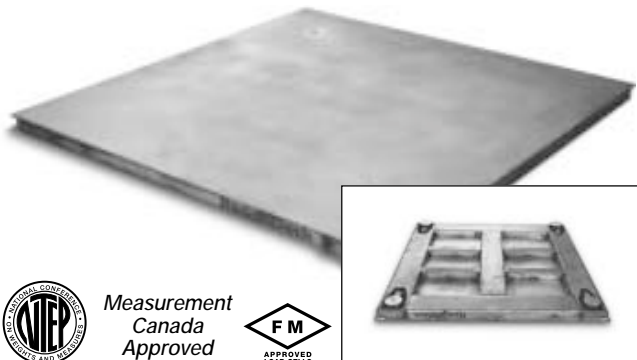


The new NEMA 4 aluminum J-box and sturdy cord grips resist wear and tear.



The RL30000W welded seal load cells are recessed within the channel and protected on all sides. SUREFOOT™ supports provide a superior load introduction surface, reducing extraneous forces which might affect scale accuracy.

RoughDeck™ SS Stainless Steel Low-Profile Floor Scale



Measurement
Canada
Approved



(SEE CHART ON BACK OF PAGE FOR PART #'S)

The RoughDeck SS is a stainless steel floor scale, NTEP certified Legal-For-Trade, designed specifically for applications requiring the added corrosion protection of stainless steel. Applications include dry chemical operations, fertilizer plants and other industries which require non-washdown corrosion resistance.

A rigid 6-inch, 304 stainless steel channel frame and smooth top plate provide a durable scale deck. For added corrosion resistance, four NTEP-certified stainless steel load cells and leveling feet, a stainless steel summing junction box and EL147HE hostile environment load cell cable complete the RoughDeck SS package.

As in all RoughDeck floor scales, the channel frame provides added protection by enclosing load cells, cable and junction box inside, away from chemicals and other industrial elements. The scale design allows the following installation options:

- Free standing for portability
- Secured with stainless steel floor anchor plates
- Stainless steel access ramps
- Flush mounted in a shallow pit

Applications

- Legal-For-Trade
- Corrosive dry chemical environments
- Portable or permanent installations
- High-accuracy weighing requirements

Standard Features

- Rugged non-corrosive design
- 304 stainless steel construction
- Four stainless steel NTEP-certified shear beam load cells
- Rigid stainless steel channel frame
- Four adjustable stainless steel SUREFOOT™ support feet
- EL604STA stainless steel NEMA 4X junction box
- 20 ft of SURVIVOR® EL147HE hostile environment load cells cable
- Threaded eyebolt holes for easy lifting

Options/Accessories

- 18778** Floor anchor plates, stainless steel (set of two)
- 18803** Four drilled deck holes for scale height adjustment
- 28740** Floor stand for indicator, 36.3" high, stainless steel, suitable for IQ plus® 310A, IQ plus® 355, IQ plus® 390, IQ plus® 590, IQ plus® 800, IQ700, IQ plus® 510, IQ plus® 710, UMC444 and UMC555
- 16960** Additional operating manual
- S-1*** Stainless steel deck with Sensortronics Factory Mutual-Approved stainless steel underdeck (Contact Intrinsically Safe Specialist for WS900 system approved load cells)
- S-2*** Stainless steel deck with Sensortronics Factory Mutual-Approved junction box and stainless steel load cells
- S-3** Stainless steel diamond treadplate safety deck, *Consult Factory*
- N/A** Canadian Legal-For-Trade versions, *Consult Factory*

Access ramps and pit frames available. See price page FS-7 (P)

** Load cell and junction box substitution.*



The load cells are recessed within the channel and protected on all sides. SUREFOOT™ supports provide a superior load introduction surface, reducing extraneous forces which might affect scale accuracy.



Unique side-entry junction box provides easy access.

APPROVALS:

NTEP certified, CC #92-001A5 Class III 5000d
Measurement Canada Approved, AM-4827,
HCSS Series

END LOAD CAPACITY:

1.50-1.87
mV/V nominal

CABLE LENGTH:

20 ft (6.1 m) (for connecting j-box to indicator)

WARRANTY:

Five year limited warranty

DIMENSIONS

SS BASES

PART #	SIZE (W x L x H)	CAPACITY LB (KG)	SHIP WT LB
18663*	2.5' x 2.5' x 3.5"	2000 lb (1000 kg)	173 lb
46239	3' x 3' x 3.5"	1000 lb (500 kg)	232 lb
18664*	3' x 3' x 3.5"	2000 lb (1000 kg)	232 lb
46240 [†]	4' x 4' x 3.5"	500 lb (225 kg)	375 lb
46241	4' x 4' x 3.5"	1000 lb (500 kg)	375 lb
18665	4' x 4' x 3.5"	5000 lb (2500 kg)	375 lb
18666	4' x 4' x 3.5"	10,000 lb (5000 kg)	490 lb
18667	4' x 5' x 3.5"	5000 lb (2500 kg)	437 lb
18668	4' x 5' x 3.5"	10,000 lb (5000 kg)	567 lb
18671	5' x 5' x 3.5"	5000 lb (2500 kg)	541 lb
18672	5' x 5' x 3.5"	10,000 lb (5000 kg)	696 lb
18676	5' x 7' x 3.5"	10,000 lb (5000 kg)	929 lb

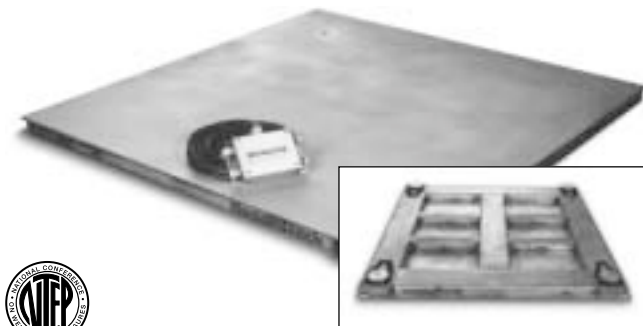
* Not recommended for use with pallet jacks.

[†] NTEP certified up to 2500d.

Access ramps and pit frames available.

See price page FS-7 (P)

RoughDeck™ HE Hostile Environment Stainless Steel Low-Profile Floor Scale



The 6" stainless steel channels provide superior protection for load cells and cable.

(SEE CHART ON BACK OF PAGE FOR PART #'S)

The RoughDeck HE is a hostile environment, stainless steel floor scale designed specifically for corrosion resistance and long life in demanding washdown and wet corrosive applications.

A 6-inch, 304 stainless steel channel frame and smooth top plate provide a durable scale deck. The HE package provides four stainless steel hermetically sealed load cells, four stainless steel support feet, a stainless steel NEMA 4X summing junction box and EL147HE hostile environment load cell cable.

The stainless steel channel frame provides added protection by enclosing load cell cable and load cells, yet provides easy access for installation and service. The NEMA 4X summing junction box can be remotely mounted up to 10 ft from the scale, keeping sensitive electronic connections away from moisture and chemicals.

The RoughDeck HE design allows the following installation options:

- Free standing for portability
- Secured with stainless steel anchor plates
- Stainless steel access ramps
- Flush mounted in a shallow pit

Applications

- Harsh chemical or washdown environments
- Portable or permanent installations

Standard Features

- Rugged washdown design
- 304 stainless steel construction
- Smooth stainless steel deck
- Four stainless steel, welded seal shear beam load cells
- Load cells protected on all four sides
- Rigid 304 stainless steel channel frame
- Remote EL604STA stainless steel NEMA 4X junction box
- Four adjustable stainless steel SUREFOOT™ support feet
- 20 ft of SURVIVOR® EL147HE hostile environment load cell cable
- Threaded eyebolt holes for easy lifting
- FM-approved load cells

Options/Accessories

- 18778** Floor anchor plates, stainless steel (set of two)
- 18803** Four drilled deck holes for scale height adjustment
- 28740** Floor stand for indicator, 36.3" high, stainless steel, suitable for IQ plus® 310A, IQ plus® 355, IQ plus® 390, IQ plus® 590, IQ plus® 800, IQ700, IQ plus® 510, IQ plus® 710, UMC444 and UMC555
- 16960** Additional operating manual
- HE-3** Stainless steel diamond treadplate safety deck, Consult Factory

Access ramps and pit frames available. See price page FS-7 (P)



The load cells are recessed within the channel and protected on all sides. SUREFOOT™ supports provide a superior load introduction surface, reducing extraneous forces which might affect scale accuracy.



Remote EL604STA stainless steel NEMA 4X junction box with 20 ft of hostile environment load cell cable.

APPROVALS:

NTEP certified, CC# 92-001A5
Designed to meet or exceed H44,
5000, 10,000 - Class III 5000d
2000 - Class III 4000d

END LOAD CAPACITY:

100% full scale

mV/V OUTPUT:

1.50-1.87 mV/v

CABLE LENGTH:

20 ft (6.1 m)

WARRANTY:

Five year limited warranty

DIMENSIONS

HE BASES

PART #	SIZE (W x L x H)	CAPACITY		SHIP WT
		LB	(KG)	LB
18660*	2.5' x 2.5' x 3.5"	2000 lb	(1000 kg)	173 lb
18681*	3' x 3' x 3.5"	2000 lb	(1000 kg)	232 lb
18682	4' x 4' x 3.5"	5000 lb	(2500 kg)	375 lb
18683	4' x 4' x 3.5"	10,000 lb	(5000 kg)	490 lb
18684	4' x 5' x 3.5"	5000 lb	(2500 kg)	437 lb
18685	4' x 5' x 3.5"	10,000 lb	(5000 kg)	567 lb
18688	5' x 5' x 3.5"	5000 lb	(2500 kg)	541 lb
18689	5' x 5' x 3.5"	10,000 lb	(5000 kg)	696 lb
18693	5' x 7' x 3.5"	10,000 lb	(5000 kg)	929 lb

* Not recommended for use with pallet jacks.

Access ramps and pit frames available.

See price page FS-7 (P)

AutoLift HE Hostile Environment Stainless Steel Low Profile Lift Floor Scale

Automatic lifting
option for
RoughDeck™ HE
Series Floor Scales!



PART #	SIZE	CAPACITY
42207	4' x 4'	2000 lb
42208	4' x 4'	5000 lb
42209	4' x 4'	10,000 lb
42211	5' x 5'	2000 lb
42212	5' x 5'	5000 lb
42213	5' x 5'	10,000 lb

Manual drop-in-
place safety bar
when scale is in
upright position.

Ideal for food processing and other applications requiring frequent washdown, the AutoLift HE provides easy underdeck cleaning by using two pneumatic lifting cylinders to raise the scale. Once the deck is raised, a manual safety bar can be positioned and the underdeck area can be thoroughly washed out.

The AutoLift HE features a rugged washdown design, including 304 stainless steel construction and four stainless steel hermetically sealed shear beam load cells. Adjustable SUREFOOT™ support feet provide superior accuracy and repeatability by accommodating side impacts and decreasing extraneous forces on the load cell.

Applications

- Applications where complete cleaning is required

Standard Features

- Rugged washdown design
- 304 stainless steel construction
- Smooth stainless steel deck
- Four stainless steel welded seal shear beam load cells
- Load cells protected on all four sides
- Rigid 304 stainless steel channel frame
- Remote EL604 stainless steel NEMA 4X junction box
- Four adjustable stainless steel SUREFOOT™ support feet
- 20 ft of SURVIVOR® hostile environment load cell cable
- Safety bar
- Requires 85-100 psi air pressure

Options/Accessories

- 44169 Four drilled deck holes for scale height adjustment
- 28740 Floor stand for indicator, 36.3" high, stainless steel, suitable for IQ plus® 310A, IQ plus® 355, IQ plus® 390, IQ plus® 590, IQ plus® 800, IQ700, IQ plus® 800, IQ plus® 510, IQ plus® 710, UMC444 and UMC555

END LOAD CAPACITY:

100% full scale

mV/V OUTPUT:

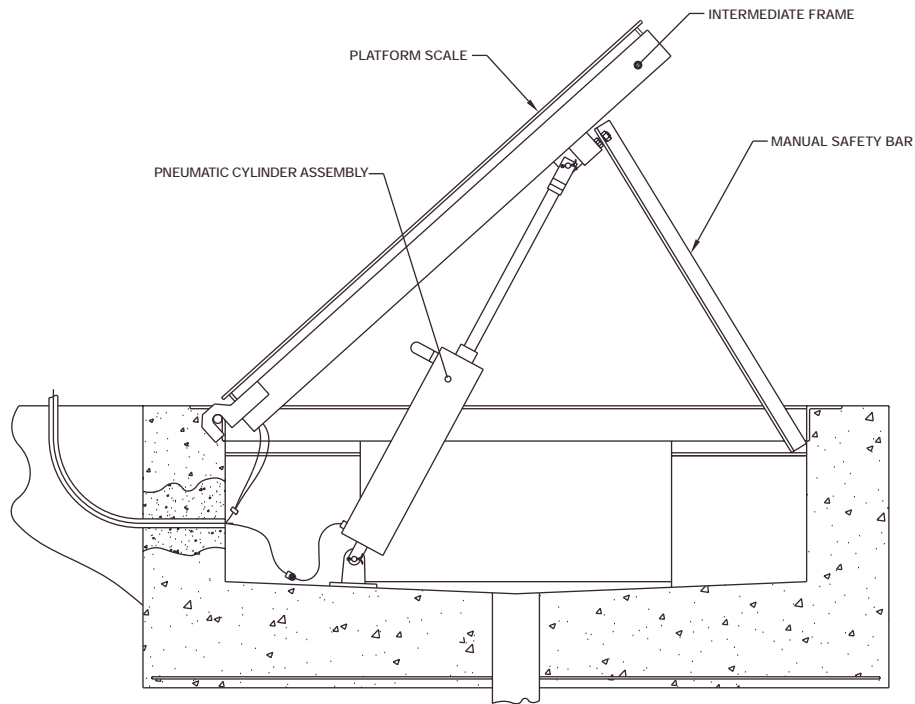
1.50-1.87 mV/V nominal

CABLE LENGTH:

20 ft (6.1m)

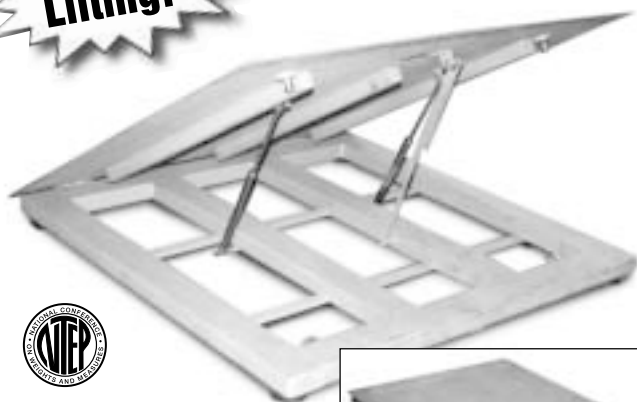
WARRANTY:

Five year limited warranty



RoughDeck™ QC Quick Clean Stainless Steel Floor Scale

**Easy
Lifting!**



Shown with optional treadplate

(SEE CHART ON BACK OF PAGE FOR PART #'S)

As easy to lift as the hood on your car, the RoughDeck QC provides an efficient mechanism for busy cleanup personnel.

Ideal for food processing and other applications requiring frequent washdown, the RoughDeck QC provides easy underdeck cleaning by using two gas shock lifting cylinders to raise the top of the scale. Once the deck is raised, a manual safety bar can be positioned and the underdeck area can be thoroughly washed out.

The RoughDeck QC features a rugged washdown design, including 304 stainless steel construction and four stainless steel hermetically sealed shear beam load cells. Adjustable SUREFOOT™ support feet provide superior accuracy and repeatability by accommodating side impacts and decreasing extraneous forces on the load cell.

Applications

- Food and chemical processing
- Low-profile pit or above-ground use

Standard Features

- Rugged washdown design
- Smooth, 304 stainless steel top deck
- Four stainless steel welded seal shear beam load cells
- Rigid 304 stainless steel tube frame
- Remote EL604 stainless steel NEMA 4X junction box
- Four adjustable stainless steel SUREFOOT™ support feet
- 20 ft of SURVIVOR® EL147HE hostile environment load cell cable
- Manual drop-in-place safety bar

Options/Accessories

28740 Floor stand for indicator, 36.3" high, stainless steel, suitable for IQ plus® 310A, IQ plus® 355, IQ plus® 390, IQ plus® 590, IQ plus® 800, IQ700, IQ plus® 510, IQ plus® 710, UMC444 and UMC555

Consult factory for this additional option:

- Treadplate stainless steel top deck

Access ramps and pit frames available. See price page FS-8 (P)

APPROVALS:
NTEP certified per H-44, Class III 5000d;
CC# 92-001A5

END LOAD CAPACITY:
100% full scale

mV/V OUTPUT:
1.50-1.87 mV/V nominal

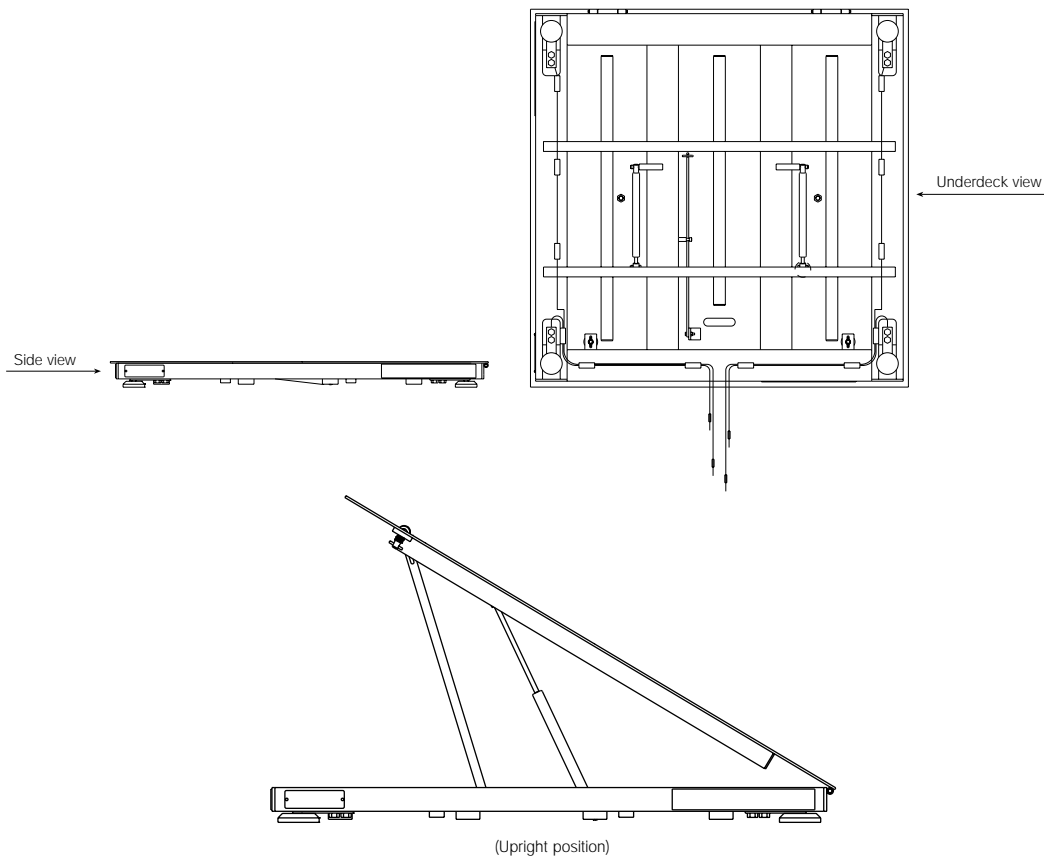
CABLE LENGTH:
20 ft (6.1m) (for connecting j-box to indicator)

REMOTE J-BOX:
Stainless steel enclosure can be located up
to 10 ft away from scale

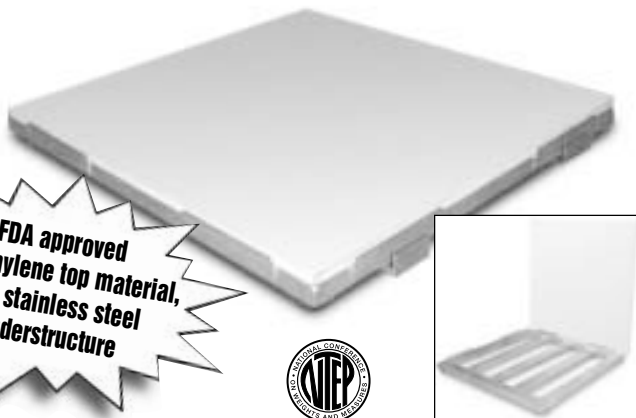
WARRANTY:
Five year limited warranty

DIMENSIONS			
QC BASES			
PART #	SIZE (W x L x H)	CAPACITY LB (KG)	SHIP WT LB
50402	2.5' x 2.5' x 3.5"	2000 lb (1000 kg)	158 lb
50403	3' x 3' x 3.5"	2000 lb (1000 kg)	208 lb
50404	4' x 4' x 3.5"	2000 lb (1000 kg)	338 lb
50405	4' x 4' x 3.5"	5000 lb (2500 kg)	338 lb
50406	4' x 4' x 4.5"	10,000 lb (5000 kg)	447 lb
50407	4' x 5' x 3.5"	2000 lb (1000 kg)	406 lb
50408	4' x 5' x 4.5"	5000 lb (2500 kg)	406 lb
50409	4' x 5' x 4.5"	10,000 lb (5000 kg)	540 lb
50410	4' x 6' x 4.5"	2000 lb (1000 kg)	477 lb
50411	4' x 6' x 4.5"	5000 lb (2500 kg)	477 lb
50412	4' x 6' x 5.5"	10,000 lb (5000 kg)	637 lb
50413	5' x 5' x 4.5"	2000 lb (1000 kg)	478 lb
50414	5' x 5' x 4.5"	5000 lb (2500 kg)	478 lb
50415	5' x 5' x 4.5"	10,000 lb (5000 kg)	637 lb
50416	5' x 7' x 5.5"	2000 lb (1000 kg)	705 lb
50417	5' x 7' x 4.5"	5000 lb (2500 kg)	705 lb
50418	5' x 7' x 4.5"	10,000 lb (5000 kg)	908 lb

Access ramps and pit frames available. See price page FS-8 (P)



RoughDeck™ SD Sanitary Deck Floor Scale



**FDA approved
polyethylene top material,
304 stainless steel
understructure**



SEE CHART ON BACK OF PAGE FOR PART #'S)

An easy-to-lift polyethylene top plate on the RoughDeck SD provides an efficient mechanism for busy cleanup personnel.

Ideal for food processing and other applications requiring frequent washdown, the RoughDeck SD provides easy underdeck cleaning by lifting the plastic top to gain access to the stainless steel understructure.

The RoughDeck SD features a rugged design, including 304 stainless steel construction and four stainless steel hermetically-sealed shear beam load cells. Adjustable SUREFOOT™ support feet provide superior accuracy and repeatability by accommodating side impacts and decreasing extraneous forces on the load cell.

Applications

- Washdown environment

Standard Features

- Rugged washdown design
- 304 stainless steel construction
- Removable polyethylene deck
(Deck weight: 80 lb (36.6 kg) on 4' x 4' size)
- Four stainless steel welded seal shear beam load cells
- Load cells protected on all four sides
- Side brackets to hold deck during washdown
- Remote EL604 stainless steel NEMA 4X/IP66 junction box
- Four adjustable stainless steel SUREFOOT™ support feet
- 20 ft (6m) of SURVIVOR® EL147HE hostile environment load cell cable

Options/Accessories

28740 Floor stand for indicator, 36.3" high, stainless steel, suitable for IQ plus® 310A, IQ plus® 350, IQ plus® 355, IQ plus® 390, IQ plus® 590, IQ plus® 800, IQ700, IQ plus® 510, IQ plus® 710, UMC444 and UMC555

Consult factory for these additional options:

- Access ramps
- Pit frames

IMPORTANT NOTE:

Applications where oily substances may be spilled could cause the deck to become slippery—caution should be used. The RoughDeck QC is recommended in these instances.

END LOAD CAPACITY:

100% full scale

mV/V OUTPUT:

1.50-1.87 mV/V nominal

CABLE LENGTH:

20 ft (6.1m) (for connecting j-box to indicator)

REMOTE J-BOX:

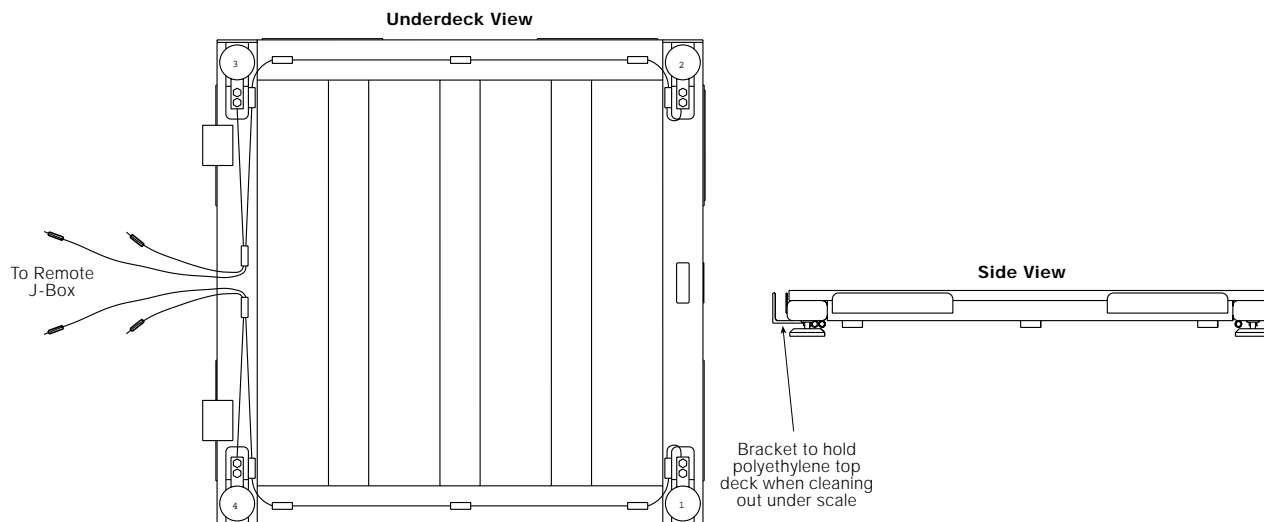
Stainless steel enclosure can be located up to 10 ft away from scale

APPROVALS:

NTEP certified per H-44, Class III 5000d;
CC# 92-001A5

WARRANTY:

Two year limited warranty



DIMENSIONS

PART #	SIZE (W x L x H)	CAPACITY LB (KG)	SHIP WT LB
50385	2.5' x 2.5' x 4.4"	2000 lb (1000 kg)	158 lb
50386	3' x 3' x 4.4"	2000 lb (1000 kg)	208 lb
50387	4' x 4' x 4.4"	2000 lb (1000 kg)	338 lb
50388	4' x 4' x 4.4"	5000 lb (2500 kg)	338 lb
50389	4' x 4' x 5.4"	10,000 lb (5000 kg)	447 lb
50390	4' x 5' x 4.4"	2000 lb (1000 kg)	406 lb
50391	4' x 5' x 5.4"	5000 lb (2500 kg)	406 lb
50392	4' x 5' x 5.4"	10,000 lb (5000 kg)	540 lb
50393	4' x 6' x 5.4"	2000 lb (1000 kg)	477 lb
50394	4' x 6' x 5.4"	5000 lb (2500 kg)	477 lb
50395	4' x 6' x 6.4"	10,000 lb (5000 kg)	637 lb
50396*	5' x 5' x 5.4"	2000 lb (1000 kg)	478 lb
50397*	5' x 5' x 5.4"	5000 lb (2500 kg)	478 lb
50398*	5' x 5' x 5.4"	10,000 lb (5000 kg)	637 lb
50399*	5' x 7' x 6.4"	2000 lb (1000 kg)	705 lb
50400*	5' x 7' x 6.4"	5000 lb (2500 kg)	705 lb
50401*	5' x 7' x 6.4"	10,000 lb (5000 kg)	908 lb

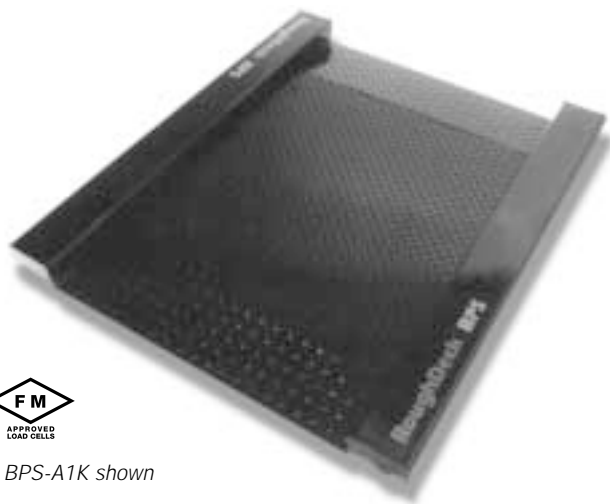
Do not use this scale in a pit application.

* Constructed of two pieces of polyethylene to make up the top deck.

IMPORTANT NOTE:

Applications where oily substances may be spilled could cause the deck to become slippery—caution should be used. The RoughDeck QC is recommended in these instances.

RoughDeck™ BPS Low-Profile Barrel and Drum Scale



BPS-A1K shown

PART #	DESCRIPTION
26953	BPS-A1K mild steel
26952	BPS-B1K mild steel portable
26954	BPS-C1K stainless steel
26951	BPS-D1K stainless steel, portable
26955	BPS-E1K hostile environment stainless steel
26950	BPS-F1K hostile environment stainless steel, portable

Built with rugged dependability for a lifetime of heavy use, this versatile roll-on barrel scale doubles as a pallet scale with its 3.5" high live rails supporting oversized loads for straddle weighments.

Barrels can be safely rolled onto the 1.5" high nonskid deck, or wheeled up the 9" ramp section with a barrel dolly. Pallets and wider items up to 1,000 lb can be loaded on the live rails with a forklift. To prevent damage, the load cells and cables are recessed into structural steel channels. Even the 4-channel junction box is fully protected in the frame, yet is easily accessed.

For special applications, choose the RoughDeck BPS constructed of 304 stainless steel for hostile environments, or portable models in mild or stainless steel with lockdown wheels and integral indicator stand. Hermetically-sealed stainless steel load cells are available for corrosive or washdown applications, and Factory Mutual-approved load cells can be specified for explosive environments.

Applications

- Barrel weighing
- Industrial processing
- Shipping and receiving

Standard Features

- 1,000 lb (500 kg) capacity
- Easy-access integral live ramps
- Low-profile design
- Diamond treadplate safety deck
- Side-entry integral junction box with 4-channel trimming
- Four adjustable SUREFOOT™ support feet
- Portable models include wheel assemblies and integral indicator stand with transport grips
- Stainless steel models feature stainless steel junction box, load cells and SUREFOOT™ support feet
- Stainless steel HE models utilize welded seal load cells for harsh washdown environments
- FM-approved load cells

Options/Accessories

- 19352 Stand-alone (floor mount) indicator stand, 36.3" high, mild steel
- 28740 Stand-alone (floor mount) indicator stand, 36.3" high, stainless steel
- 28001 Scale-mounted indicator stand with transport grips, mild steel
- 28002 Scale-mounted indicator stand with transport grips, stainless steel
- 18777 Floor anchor plates, mild steel (set of two)
- 18778 Floor anchor plates, stainless steel (set of two)
- 28082 Additional operating manual



Fully-enclosed junction box and slide-out tray provide superior protection and quick access.

BPS-D1K stainless steel, portable, scale-mounted indicator stand with transport grips shown at right.



FULL SCALE CAPACITY:

1000 lb (500 kg)

END LOAD CAPACITY:

100% full scale

LOAD CELL CAPACITY:

1000 lb (500 kg)

RATED EXCITATION:

10 VDC - 15 VDC max

BRIDGE RESISTANCE:

Four 350-ohm load cells

mV/V OUTPUT:

0.75 mV/V

CABLE LENGTH:

20 ft (6.1 m)

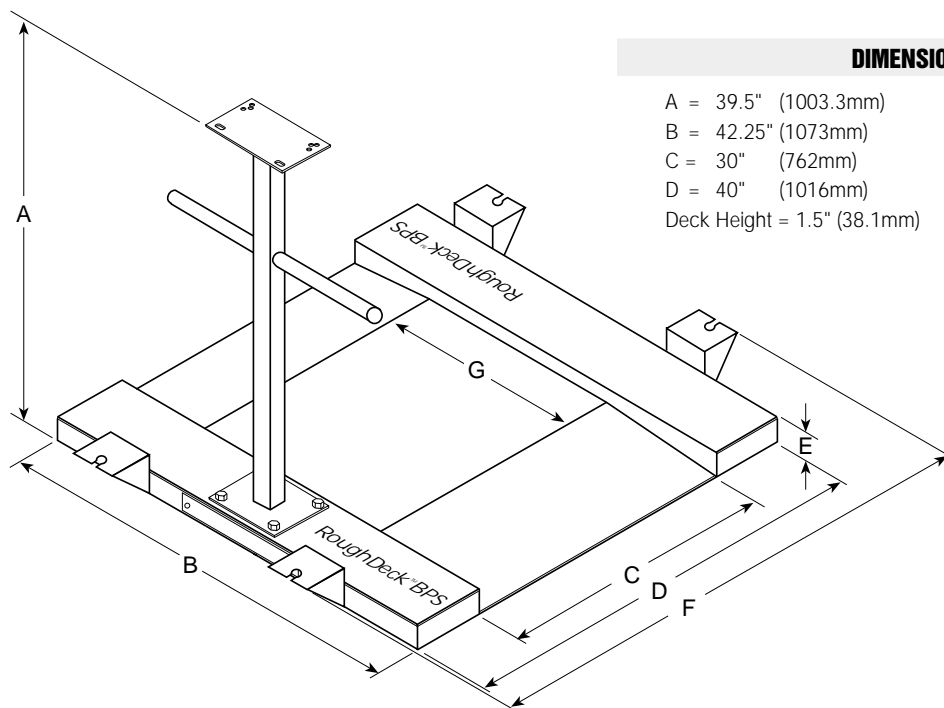
SHIPPING WEIGHT:

Stationary: 180 lb (81.6 kg)

Portable: 215 lb (97.6 kg)

WARRANTY:

One year limited warranty


DIMENSIONS

A = 39.5" (1003.3mm)	E = 3.5" (88.9mm)
B = 42.25" (1073mm)	F = 48" (1219mm)
C = 30" (762mm)	G = 24" (609.6mm)
D = 40" (1016mm)	
Deck Height = 1.5" (38.1mm)	

Altralite™ Portable Low-Profile Floor Scale



The Altralite is a highly portable, aluminum, low-profile floor scale well suited for a variety of industrial weighing environments. An efficient frame design delivers exceptional durability and accuracy. It is the ideal solution for applications that demand an easily-transportable floor scale.

The 120 lb Altralite features a 6-inch channel frame and diamond treadplate safety deck with a durable black anodized finish. Four tool steel load cells, SUREFOOT™ support feet, convenient slide-out junction box and SURVIVOR® hostile environment load cell cable complete the package.

**Weighs
Only
120 lb!**

Applications

- Rental applications
- Portable installations

Standard Features

- Low-profile design
- Black anodized aluminum construction
- 6" (152.4mm) channel frame
- Diamond treadplate safety deck
- Four alloy steel shear beam load cells
- Side-entry integral junction box
- 20 ft of SURVIVOR® hostile environment load cell cable
- Four adjustable SUREFOOT™ support feet

Options/Accessories

22290 Additional operating manual



The channel-frame design provides strength and unequalled load cell, cable and junction box protection. Junction box cable may be wrapped around a cleat for convenient and safe storage during transportation. Adjustable SUREFOOT support feet offer superior load introduction.



A fully-enclosed junction box summing box and slide-out tray provide protection and quick access for service and installation.

END LOAD CAPACITY:

100% full scale

MV/V OUTPUT:

1.50-1.87 mV/V nominal

CABLE LENGTH:

20 ft (6.1 m)

HEIGHT:

3.25 in (82.6mm) min

WARRANTY:

One year limited warranty

DIMENSIONS

ALTRALITE BASES

PART #	CAPACITY KB (KG)	SIZE (W x L x H)	SHIP WT LB (KG)
18677 ...	5000 lb (2599 kg)	4' x 4' x 3.5"	150 lb (68 kg)

DeckHand™ Portable Scale



*Shown with optional ramp.
Indicator sold separately; shown for illustration only.*



Measurement
Canada
Approved

(SEE CHART ON BACK OF PAGE FOR PART #'S)

Designed for easy one-person operation, the DeckHand portable floor scale features two large rubber wheels for easy movement on rough floors. Unlike portable scales that rest on four wheels, the DeckHand's wheels only touch the floor when the unit is tilted back for movement. This means the weighing platform remains stable even on uneven floors.

Available in painted steel or stainless steel, these rugged scales stand up to tough conditions. Two opposed off-center load cells provide superior accuracy without the need for leveling feet. IQ plus Series indicators can be easily column-mounted with slight modifications. A mounting bracket for our models IQ plus® 310A, IQ plus® 390-DC, IQ plus® 510, IQ plus® 710, and IQ plus® 800 indicators come standard on the column assembly.

Applications

- General industrial applications
- Rental fleets

Standard Features

- Mild steel or stainless wheeled frame, base, and indicator stand
- 500 lb, 1000 lb, 2000 lb capacity
- Standard indicator mount with integral handles for the IQ plus® 310A, IQ plus® 390-DC, IQ plus® 510, IQ plus® 590, IQ plus® 710, and IQ plus® 800 indicators, painted or stainless steel available
- Large rubber wheels simplify movement on uneven floors
- One-person portability
- RL1260 aluminum load cells

Options/Accessories

- 41292** ... Clam shell for 1260 load cell, stainless steel
- 43376* Ramp assembly, 500/1000 lb
- 43377* Ramp assembly, stainless steel, 500/1000 lb
- 43378* Ramp assembly, 2000 lb
- 43379* Ramp assembly, stainless steel, 2000 lb
- 43978 Additional operating manual

* Ramp sizes = 25" x 27"

** Must order in quantities of two

Optional Indicator Mounts

- 41371 Mounting bracket for IQ 700 IS, stainless steel, 4" x 9.12"
- 41373 Mounting bracket for IQ 700 IS, painted steel, 4" x 9.12"
- 43938 Mounting bracket for CW 80-I, stainless steel, 4" x 7.5"

APPROVALS:

NTEP certified, CC# 98-004, Class III, 2500d;
Measurement Canada approved, AM-5218

END LOAD CAPACITY:

100% end loading

mV/V OUTPUT:

2 mV/V

CABLE LENGTH:

9' 10" (3 m)

HEIGHT:

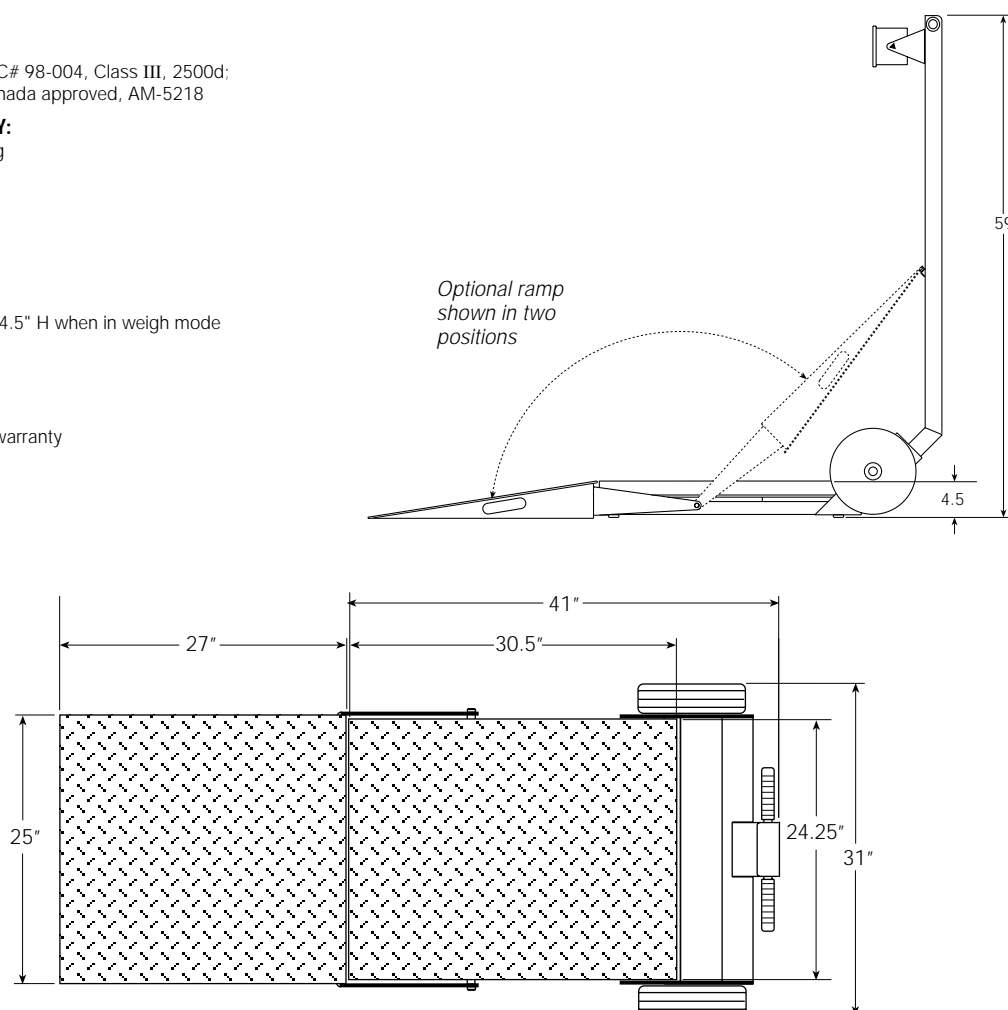
Weighing platter: 4.5" H when in weigh mode

COLUMN HEIGHT:

59"

WARRANTY:

One year limited warranty

**DIMENSIONS****DECKHAND**

PART #	MODEL	OVERALL SIZE (W x L x H)	CAPACITY LB (KG)	APPROXIMATE SHIP WEIGHT LB (KG)	APPROXIMATE SHIP WEIGHT LB (KG)
41293	DH-500	31" x 41" x 4.5"	500 lb (226.8 kg)	336 lb (152 kg)	380 lb (172 kg) w/ramp & indicator
41294	DH-1000	31" x 41" x 4.5"	1000 lb (453.6 kg)	356 lb (161 kg)	400 lb (181 kg) w/ramp & indicator
41295	DH-2000	31" x 41" x 4.5"	2000 lb (907.2 kg)	373 lb (169 kg)	430 lb (195 kg) w/ramp & indicator
41296*	DH-500	31" x 41" x 4.5"	500 lb (226.8 kg)	336 lb (152 kg)	380 lb (172 kg) w/ramp & indicator
41297*	DH-1000	31" x 41" x 4.5"	1000 lb (453.6 kg)	356 lb (161 kg)	400 lb (181 kg) w/ramp & indicator
41298*	DH-2000	31" x 41" x 4.5"	2000 lb (907.2 kg)	373 lb (169 kg)	430 lb (195 kg) w/ramp & indicator

* Stainless steel

RoughDeck™ FXB Flexure Lever Floor Scale



(SEE CHART ON BACK OF PAGE FOR PART #'S)

Designed to handle extreme motion and shock loading, the RoughDeck FXB provides accurate, reliable weighments under the most abusive operating conditions.

The RoughDeck FXB will perform with consistent accuracy in shock-loading, end-loading or corner-loading conditions where other scales will not survive. Spring steel flexures and heavy-duty lever system transmit load forces to one centralized load cell, providing for extreme durability and lower overall operating and maintenance costs.

The RoughDeck FXB comes standard with rugged all-steel construction, providing stability and durability. NTEP-certified models range in size and capacity from 24" x 24" 500 lb to 72" x 96" 10,000 lb.

The RoughDeck FXB flexure lever floor scale delivers accuracy and reliability in environments with motion, shock-loading and vibration.

Applications

- Industrial processing
- Heavy-duty weighing
- Pallet weighing
- Shipping and receiving

Standard Features

- Rugged all-steel construction
- Unique flexure design filters motion and shock loading
- Spring steel flexures
- One Rice Lake Weighing Systems brand RL20000 series nickel-plated S-beam load cell and plated wire rope
- NTEP-certified models in sizes 24" x 24" 500 lb through 72" x 96" up to 10,000 lb capacity

Options/Accessories

32958 Additional operating manual

Consult factory for pricing and availability:

- Fork lift skids
- Fork lift skids with indicator column
- Epoxy-painted base
- Stainless steel platform cover
- All stainless steel construction
- Special sizes, heights and capacities

APPROVALS:

NTEP certified, CC# 95-062, Class III 5000d

ELECTRICAL:

EXCITATION: 10 VDC - 15 VDC max
NONLINEARITY: .03% FS
HYSTERESIS: .02% FS
BRIDGE RESISTANCE: 350 ohms
OUTPUT: 3.0 mV/V

LOAD CELL CONSTRUCTION:

High-alloy tool steel, double plated chrome over nickel

END LOADING CAPACITY:

100% of scale capacity

SAFE OVERLOAD CAPACITY:

150% of scale capacity

WARRANTY:

Two year limited warranty

DIMENSIONS

FXB BASES	PART #	CAPACITY LB (KG)	L x W x H INCHES	SHIP WT LB
* FXB-1824-.5K	33134	500 lb (250 kg)	18" x 24" x 6.62"	120 lb
* FXB-1824-1K	33066	1000 lb (500 kg)	18" x 24" x 6.62"	125 lb
* FXB-1830-1K	33136	1000 lb (500 kg)	18" x 30" x 6.62"	130 lb
* FXB-2424-.5K	33067	500 lb (250 kg)	24" x 24" x 6.62"	135 lb
* FXB-2424-1K	33068	1000 lb (500 kg)	24" x 24" x 6.62"	155 lb
* FXB-3030-.5K	33138	500 lb (250 kg)	30" x 30" x 6.62"	177 lb
* FXB-3030-1K	33069	1000 lb (500 kg)	30" x 30" x 6.62"	177 lb
* FXB-3030-1.5K	33139	1500 lb (750 kg)	30" x 30" x 6.62"	197 lb
* FXB-3030-2K	33070	2000 lb (1000 kg)	30" x 30" x 8.25"	280 lb
* FXB-3636-1K	33140	1000 lb (500 kg)	36" x 36" x 8.25"	320 lb
* FXB-3636-2K	33071	2000 lb (1000 kg)	36" x 36" x 8.25"	390 lb
* FXB-3636-5K	33072	5000 lb (2500 kg)	36" x 36" x 8.25"	420 lb
* FXB-3846-1K	33141	1000 lb (500 kg)	38" x 46" x 8.25"	610 lb
* FXB-4848-2K	33073	2000 lb (1000 kg)	48" x 48" x 8.25"	690 lb
* FXB-4848-5K	33074	5000 lb (2500 kg)	48" x 48" x 8.25"	725 lb
* FXB-4848-10K	33075	10,000 lb (5000 kg)	48" x 48" x 9.25"	780 lb
FXB-4848-20K	33076	20,000 lb (10,000 kg)	48" x 48" x 13.25"	1020 lb
* FXB-4860-5K	33077	5000 lb (2500 kg)	48" x 60" x 8.25"	935 lb
* FXB-4860-10K	33078	10,000 lb (5000 kg)	48" x 60" x 9.25"	1015 lb
* FXB-4872-5K	33149	5000 lb (2500 kg)	48" x 72" x 9.25"	1005 lb
* FXB-4872-10K	33080	10,000 lb (5000 kg)	48" x 72" x 9.25"	1085 lb
FXB-4872-20K	33150	20,000 lb (10,000 kg)	48" x 72" x 13.25"	1435 lb
* FXB-6060-5K	33081	5000 lb (2500 kg)	60" x 60" x 8.25"	1110 lb
* FXB-6060-10K	33082	10,000 lb (5000 kg)	60" x 60" x 9.25"	1180 lb
FXB-6060-20K	33152	20,000 lb (10,000 kg)	60" x 60" x 13.25"	1500 lb
* FXB-6072-10K	33083	10,000 lb (5000 kg)	60" x 72" x 10.25"	1290 lb
* FXB-6084-10K	33156	10,000 lb (5000 kg)	60" x 84" x 13.25"	1400 lb
FXB-6084-20K	33157	20,000 lb (10,000 kg)	60" x 84" x 13.25"	1900 lb
* FXB-7296-10K	33159	10,000 lb (5000 kg)	72" x 96" x 13.25"	1920 lb
FXB-7296-20K	33160	20,000 lb (10,000 kg)	72" x 96" x 15.25"	2340 lb
FXB-84108-20K	33163	20,000 lb (10,000 kg)	84" x 108" x 15.25"	3550 lb
FXB-96120-30K	33166	30,000 lb (15,000 kg)	96" x 120" x 19.50"	5600 lb

* NTEP certified

SURVIVOR® FB Series Electronic Flexure Base Floor Scale



(SEE CHART ON BACK OF PAGE FOR PART #'S)

The SURVIVOR FB features a unique flexure design that transmits all force via stainless steel flexures. The load is transferred from the levers to the load cell by a wire rope assembly, resulting in greater stability, increased weight accuracy and a base that is more resistant to shock-loads and vibration.

The FB base utilizes "through pivot head loading." This exclusive Rice Lake Weighing Systems feature loads the flexures for optimal signal sensitivity and places the load tubes well into the base corners to prevent deck tipping.

Setup can be accomplished in a matter of minutes by simply backing off six bolts and connecting the load cell cable to your meter. The SURVIVOR FB can be used with any Rice Lake Weighing Systems indicator.

Applications

- Industrial processing
- Heavy-duty weighing
- Pallet weighing
- Shipping and receiving

Standard Features

- One S-type, double-plated load cell
- Rugged all-steel construction
- Unique flexure design filters motion and shock loading
- Stainless steel flexures
- NTEP certified

Options/Accessories

19352 Floor stand for indicator, suitable for IQ plus® 310A, IQ700, UMC444 & UMC555

16940 Additional operating manual

Fork Lift Skid with fixed pedestals:

18747 FBP48, 48" (1219.2mm) wide

18748 FBP60, 60" (1524.0mm) wide

18749 FBP72, 72" (1828.8mm) wide

18750 FBP84, 84" (2133.6mm) wide

Consult factory for additional options:

- Hot dipped galvanized coating
- Stainless steel construction
- Stainless steel load cell
- Special sizes, heights and capacities available upon request

APPROVALS:

NTEP certified, CC# 91-138, Class III 5000d

ELECTRICAL:

EXCITATION: 10 VDC - 15 VDC max
 NONLINEARITY: .03% FS
 HYSTERESIS: .02% FS
 BRIDGE RESISTANCE: 350 ohms
 OUTPUT: 3.0 mV/V

LOAD CELL CONSTRUCTION:

High-alloy tool steel, double plated chrome over nickel

END LOADING CAPACITY:

100% of scale capacity

SAFE OVERLOAD CAPACITY:

150% of scale capacity

WARRANTY:

Two year limited warranty

DIMENSIONS

FXB BASES	PART #	CAPACITY LB (KG)	L x W x H INCHES	SHIP WT LB
FB2424-500	18696	500 lb (250 kg)	24" x 24" x 7.25"	180 lb
FB2424-1000	18697	1000 lb (500 kg)	24" x 24" x 7.25"	180 lb
FB3030-1000	18728	1000 lb (500 kg)	30" x 30" x 7.25"	215 lb
* FB3030-2000	18733	2000 lb (1000 kg)	30" x 30" x 8.25"	232 lb
FB3030-5000	18730	5000 lb (2500 kg)	30" x 30" x 8.00"	225 lb
* FB3636-3000	18698	3000 lb (1500 kg)	36" x 36" x 8.25"	275 lb
FB4848-3000	18732	3000 lb (1500 kg)	48" x 48" x 8.00"	740 lb
* FB4848-5000	18699	5000 lb (2500 kg)	48" x 48" x 8.00"	740 lb
* FB4848-10,000	18700	10,000 lb (5000 kg)	48" x 48" x 10.00"	770 lb
* FB4848-20,000	18701	20,000 lb (10,000 kg)	48" x 48" x 13.50"	1175 lb
* FB4860-5000	18702	5000 lb (2500 kg)	48" x 60" x 10.00"	850 lb
* FB4860-10,000	18703	10,000 lb (5000 kg)	48" x 60" x 10.00"	888 lb
* FB4860-20,000	18704	20,000 lb (10,000 kg)	48" x 60" x 13.50"	1300 lb
* FB4872-5000	18705	5000 lb (2500 kg)	48" x 72" x 11.25"	1275 lb
* FB4872-10,000	18706	10,000 lb (5000 kg)	48" x 72" x 11.25"	1325 lb
* FB6060-5000	18708	5000 lb (2500 kg)	60" x 60" x 10.00"	1025 lb
* FB6060-10,000	18709	10,000 lb (5000 kg)	60" x 60" x 10.00"	1045 lb
* FB6060-20,000	18710	20,000 lb (10,000 kg)	60" x 60" x 13.50"	1400 lb
* FB6072-20,000	18712	20,000 lb (10,000 kg)	60" x 72" x 13.50"	1575 lb
* FB6084-10,000	18713	10,000 lb (5000 kg)	60" x 84" x 11.25"	1600 lb
* FB6084-20,000	18714	20,000 lb (10,000 kg)	60" x 84" x 13.50"	1850 lb
FB7272-30,000	18717	30,000 lb (15,000 kg)	72" x 72" x 17.75"	2000 lb
FB8484-30,000	18722	30,000 lb (15,000 kg)	84" x 84" x 15.50"	2900 lb
FB96120-30,000	18727	30,000 lb (15,000 kg)	96" x 120" x 19.75"	4700 lb

* NTEP certified

FORK LIFT SKID WITH FIXED PEDESTALS

PART #	WIDTH IN (MM)	SHIP WT LB (KG)
18747	48" (1219.2mm)	52 lb (23.6 kg)
18748	60" (1524.0mm)	64 lb (29.1 kg)
18749	72" (1828.8mm)	75 lb (34.1 kg)
18750	84" (2133.6mm)	86 lb (39.0 kg)