

## Ishida Nova-II Price-Computing Scale



PART #	MODEL	CAPACITY	GRADUATION
46555 ...	NOVA-II-15 lb .....	15 lb/6 kg ....	0.005 lb/0.002 kg
41465 ...	NOVA-II-30 lb .....	30 lb/15 kg ..	0.01 lb/0.005 kg
46554 ...	NOVA-II-60 lb .....	60 lb/30 kg ..	0.02 lb/0.01 kg
46556 ...	NOVA-II-30 lb w/pole ..	30 lb/15 kg ..	0.01 lb/0.005 kg

The Ishida NOVA-II retail scale provides 1/3000 accuracy for high precision performance. NTEP-certified, this versatile scale offers an operator display as well as a convenient customer display. The compact design maximizes work space and advanced function keys simplify calculations.

Easy to use, the NOVA-II provides one-touch zero adjustment and tare selection. The "save" key stores tare and unit prices until new values are entered. Convenient preset keys store up to 15 unit prices or tares.

### Applications

- Point-of-sale weighing and price computing

### Standard Features

- High accuracy
- Advanced computing functions
- Convenient adjustment keys
- Memory function
- Compact design
- Customer display on rear of unit

### Options/ Accessories

- 47976 ..... Fish Platter
- 47977 ..... Produce Platter
- 48727 ..... Additional operating manual
- 48728 ..... Additional service manual

(Nova-II 30 lb with pole display)



## Ishida BC-3000 Price-Computing Scale with Printer



PART #	DESCRIPTION	CAPACITY
53867 ...	Dual Range BC-3000 ....	15 lb/0.005 lb 30 lb x 0.01 lb

The Ishida BC-3000 retail scale/printer offers sophisticated data storage and flexible printing capability in point-of-sale applications.

With the ability to store up to 176 preset items (with shift key), the BC-3000 can be configured for simple operation, and will speed up customer cycle times.

Choose from seven different character sites when programming text descriptions. In addition, reverse print is available for maximum label flexibility.

### Applications

- Sophisticated point-of-sale weighing

### Standard Features

- Dual range: 0-14.995 x 0.005 lb/15-30 x 0.01 lb
- 88 one-touch preset keys. Each key can be assigned two items using the shift key, for a total of 176 presets
- Thermal dot printer
- Reverse printing
- Seven different character sizes that are easily programmed
- Printed data positions can be freely altered, allowing the user to make unique label
- Keyboard formats for presetting and programming can be easily switched using key sheets
- Memory capacity: 128 K

### Options/ Accessories

- 46916 ..... Produce Platter
- 46917 ..... Fish Platter
- 46921 ..... Korean/English language firmware
- N/A ..... Chinese/Japanese/English firmware
- 46923 ..... KG version firmware
- 46919 ..... Remote load cell kit
- 47341 ..... Continuous roll thermal journal paper, 64mm wide
- N/A ..... Single range firmware
- 44299 ..... Additional operating manual
- 48775 ..... Additional service manual

**ACCURACY:**

1/3000

**DISPLAY:**

VFD, 0.453" (11.5mm) character height

**DISPLAY ITEMS:**

Weight: 5 digits

Unit price: 5 digits

Total price: 6 digits

**WEIGHT:**

Without pole display: 14.3 lb (6.5 kg)

With pole display: 15.9 lb (7.2 kg)

**PRESET KEY:**

Stores up to 15 unit prices or tares

**POWER SOURCE:**115/230V  $\pm 10\%$ , 50/60Hz**POWER CONSUMPTION:**

5 W (115 VAC)

6 W (230 VAC)

**OPERATING TEMPERATURE:**

23°F to 104°F (-5°C to 40°C)

**CLASSIFICATION:**

NTEP certified, CC# 98-001

**DIMENSIONS****Without pole display**

A: 14.1" (357mm)

C: 13.8" (350mm)

B: 14.2" (360mm)

D: 4.53" (115mm)

E: 9.8" (249mm)

**With pole display**

A: 14.1" (357mm)

E: 2.76" (70mm)

B: 15.4" (390mm)

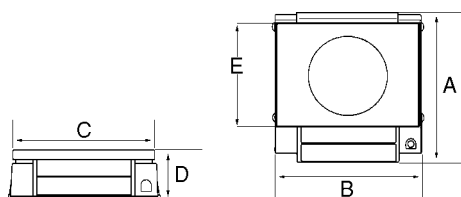
F: 16.9" (429mm)

C: 14.2" (360mm)

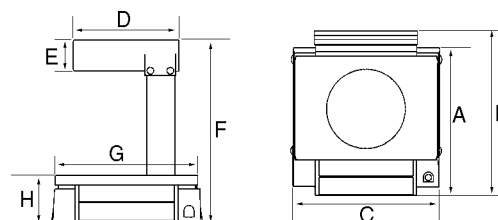
G: 13.8" (350mm)

D: 9.84" (250mm)

H: 4.53" (115mm)



Without pole display



With pole display

## BC-3000

## Specifications

**CAPACITY:**

0-14.995 x 0.005 lb/15-30 x 0.01 lb

**ACCURACY:**

1/3000

**DISPLAY:**

U/P: 6 digits

Weight: 5 digits

Price: 7 digits

**PRINTER:**

Thermal dot printer

**PRINTING SPEED:**

70 mm (2.36" per second)

**PRESET KEYS:**

88 keys (176 presets using shift key)

**MEMORY CAPACITY:**

128 K

**LABEL SIZE:**

2.52" x 3.35" (64mm x 85mm) (variable)

Printing width: Max. 2.36" (60mm)

**ELECTRICAL POWER:**

115 VAC, 60Hz

**POWER CONSUMPTION:**

Stand-by: 50W

In operation: 100W

**WEIGHT:**

26.5 lb (12 kg)

**CLASSIFICATION:**

NTEP certified, CC# 95-057A3

**DIMENSIONS**

A: 9.84" (250mm)

G: 17.32" (440mm)

B: 15.75" (400mm)

H: 6.61" (168mm)

C: 2.56" (65mm)

I: 17.72" (450mm)

D: 8.86" (225mm)

J: 7.80" (198mm)

E: 9.45" (240mm)

K: 2.56" (65mm)

F: 4.53" (115mm)

L: 16.54" (420mm)

