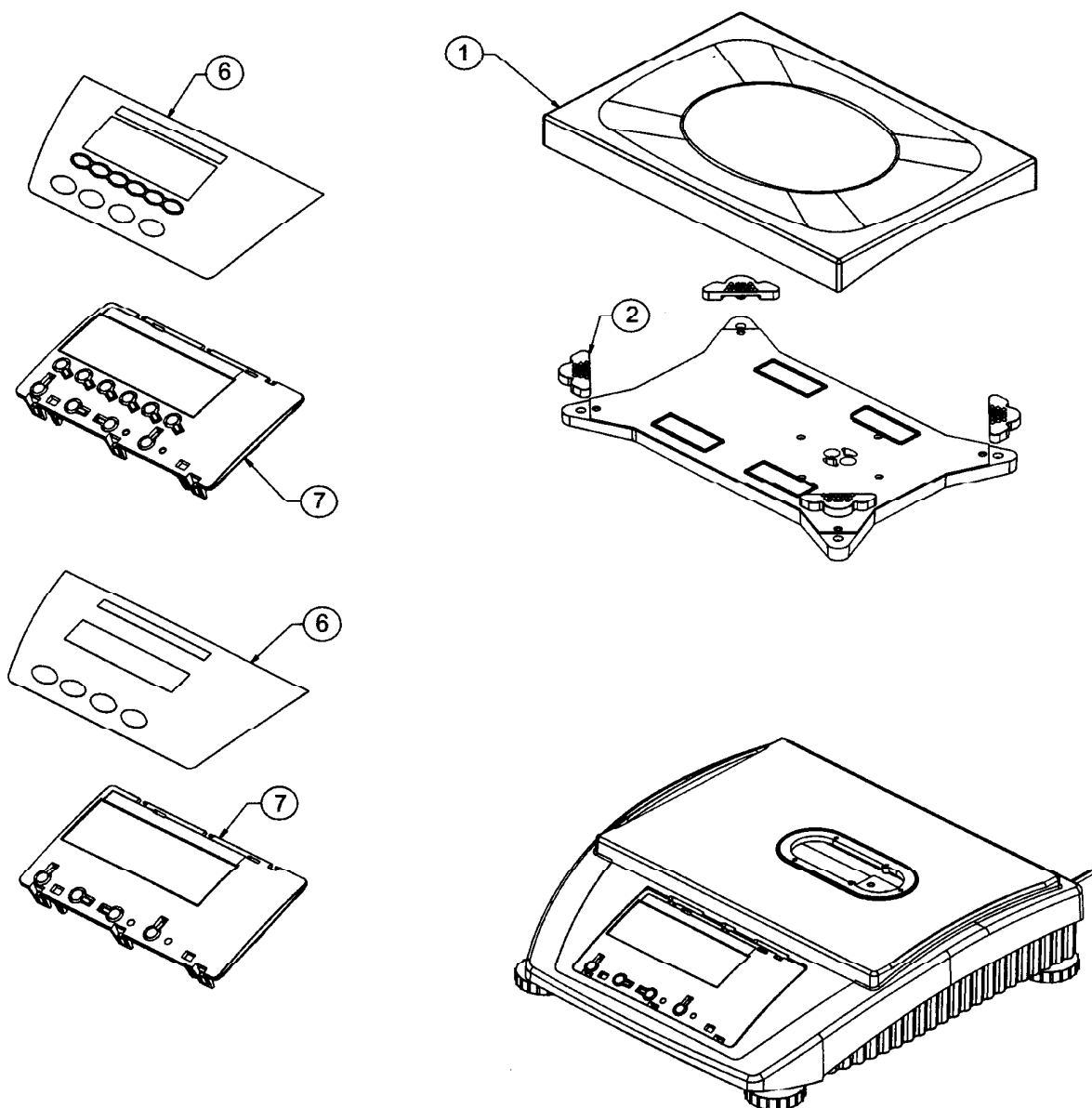


## Ranger, Fig. 1

Parts not numbered are shown for clarity.

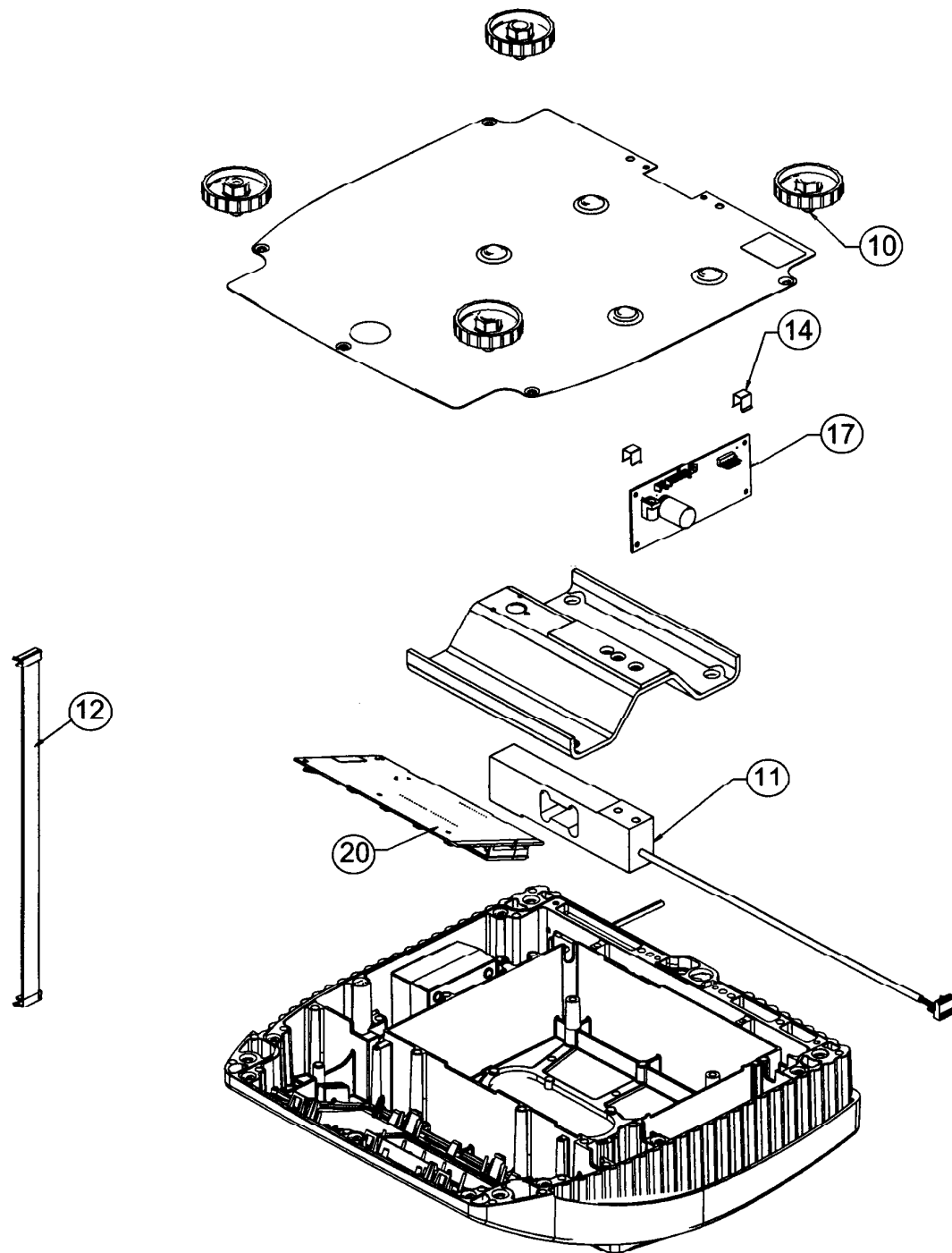
Click on the key number of the part you are interested in. The part number will be on the next page that appears.



## Ranger Fig. 2

Parts not numbered are shown for clarity.

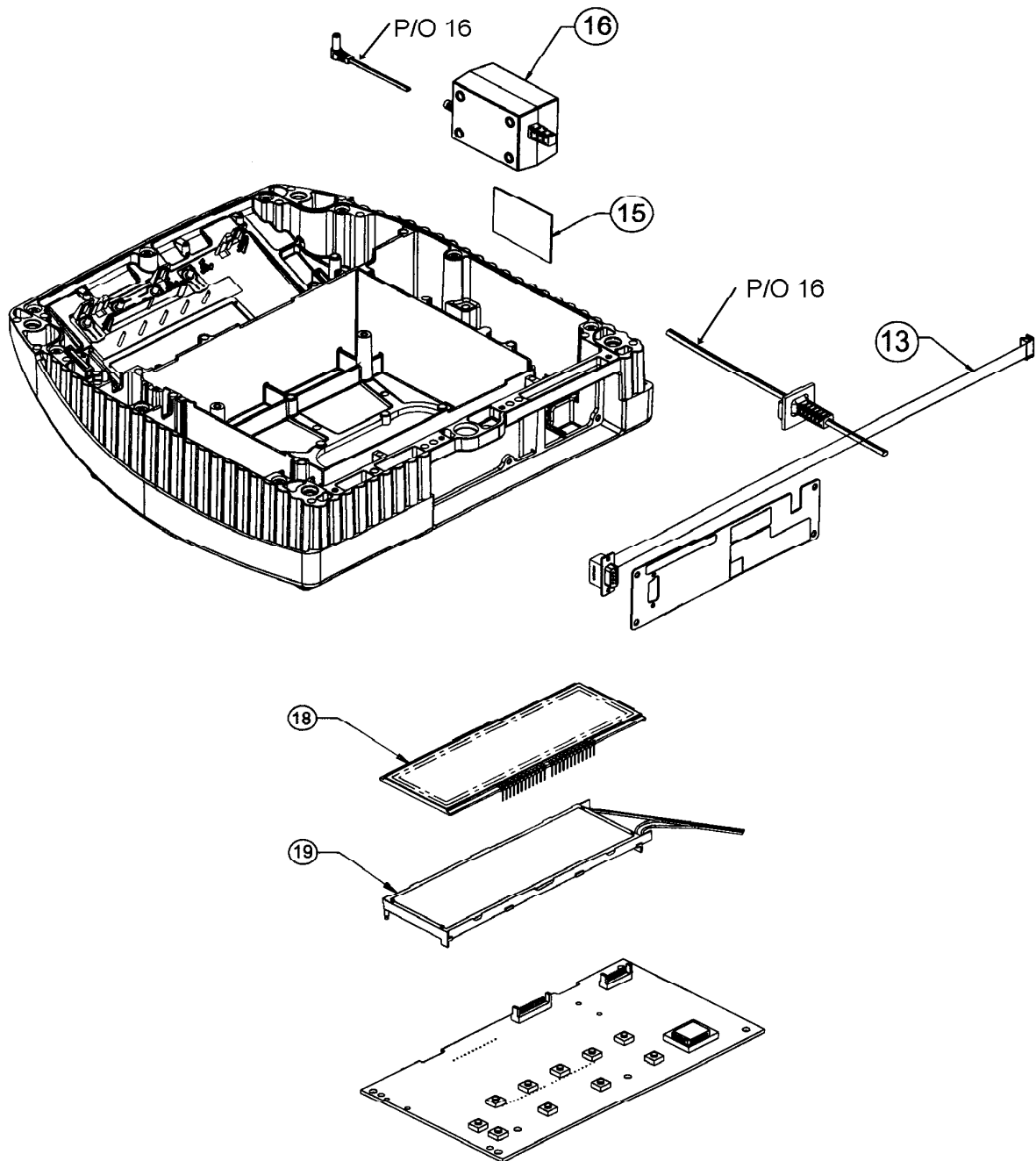
Click on the key number of the part you are interested in. The part number will be on the next page that appears.



## Ranger Fig. 3

Parts not numbered are shown for clarity.

Click on the key number of the part you are interested in. The part number will be on the next page that appears.





**AfterMarket**  
Parts • Service • Support • Accessories

# ServiceParts List

Series: Ranger Balances

Status: Active

Model: RD3RS, RD6RS, RD12LS, RD30LS, RD60LS, RC3RS, RC6RS, RC12LS, RC30LS, RC60LS

Key	Figure	Part No.	Description
01	01	21203437	Platform (240 x 350), (Ranger 12kg, 30kg and 60kg)
01	01	21203438	Platform (200 x 240), (Ranger 3kg and 6kg)
02	01	21203238	Rubber Shock Absorber (Ranger Hi Res)
02	01	21203073	Rubber Shock Absorber (All Ranger Except Hi Res)
06	01	21203432	Label, Function, (Ranger, Weigh, Dry, 3kg and 6kg)
06	01	21203429	Label, Function, (Ranger, Count, 12kg, 30kg, 60kg)
06	01	21203431	Label, Function, (Ranger, Weigh, Dry, 12kg, 30kg, 60kg)
06	01	21203430	Label, Function, (Ranger, Count, 3kg and 6kg)
07	01	21203120	Switch Actuator, (Ranger, Count)
07	01	21203119	Switch Actuator, (Ranger, Weigh, Dry)
10	02	21203433	Feet, (Ranger 12kg, 30kg and 60kg)
10	02	21203434	Feet, (Ranger 3kg and 6kg)
11	02	21203144	Load Cell, (Ranger, 6kg)
11	02	21203152	Load Cell, (Ranger, 30kg)
11	02	21203143	Load Cell, (Ranger, 3kg)
11	02	21203151	Load Cell, (Ranger, 12kg)
11	02	21203153	Load Cell, (Ranger, 60kg)
12	02	21203164	Cable Analog PCB, 110mm, (Ranger, 3kg, 6kg)
12	02	21203167	Cable Analog PCB, 300mm, (Ranger, 12kg, 30kg, 60kg )
14	02	21203166	Clamp, Digital PCB, (All Ranger), Also included in Hardware Kit 21203404
17	02	21203092	PCB, Analog, (All Ranger)



**AfterMarket**  
Parts • Service • Support • Accessories

# ServiceParts List

Series: Ranger Balances

Status: Active

Model: RD3RS, RD6RS, RD12LS, RD30LS, RD60LS, RC3RS, RC6RS, RC12LS, RC30LS, RC60LS

Key	Figure	Part No.	Description
20	02	80500576	PCB, Digital, w/ LCD. Backlight, Eprom (RC, all)
20	02	80500575	PCB, Digital, w/ LCD. Backlight, Eprom (RD, all)
13	03	21203168	Cable, RS232 Internal, (All Ranger)
15	03	21203184	Double sided tape, (All Ranger)
16	03	21255101	AC Adapter, UK Plug (All Ranger)
16	03	21255102	AC Adapter, US Plug, (All Ranger)
16	03	21255100	AC Adapter, EURO Plug (All Ranger)
18	03	21203135	LCD, (Ranger, Count)
18	03	21203134	LCD, (Ranger, Weigh, Dry)
19	03	21203136	Backlighting, (Ranger, Weigh, Dry)
19	03	21203137	Backlighting, (Ranger, Count)
	None	21204033	Battery Charger PCB, (If replacing 21203105 order AC Adapter also) (All Ranger)
	None	21203720	In service cover Ranger Large
	None	21203404	Hardware Kit (All Ranger)
	None	21203232	Rep. 12V battery, (All Ranger)
	None	21203719	In service cover Ranger Small