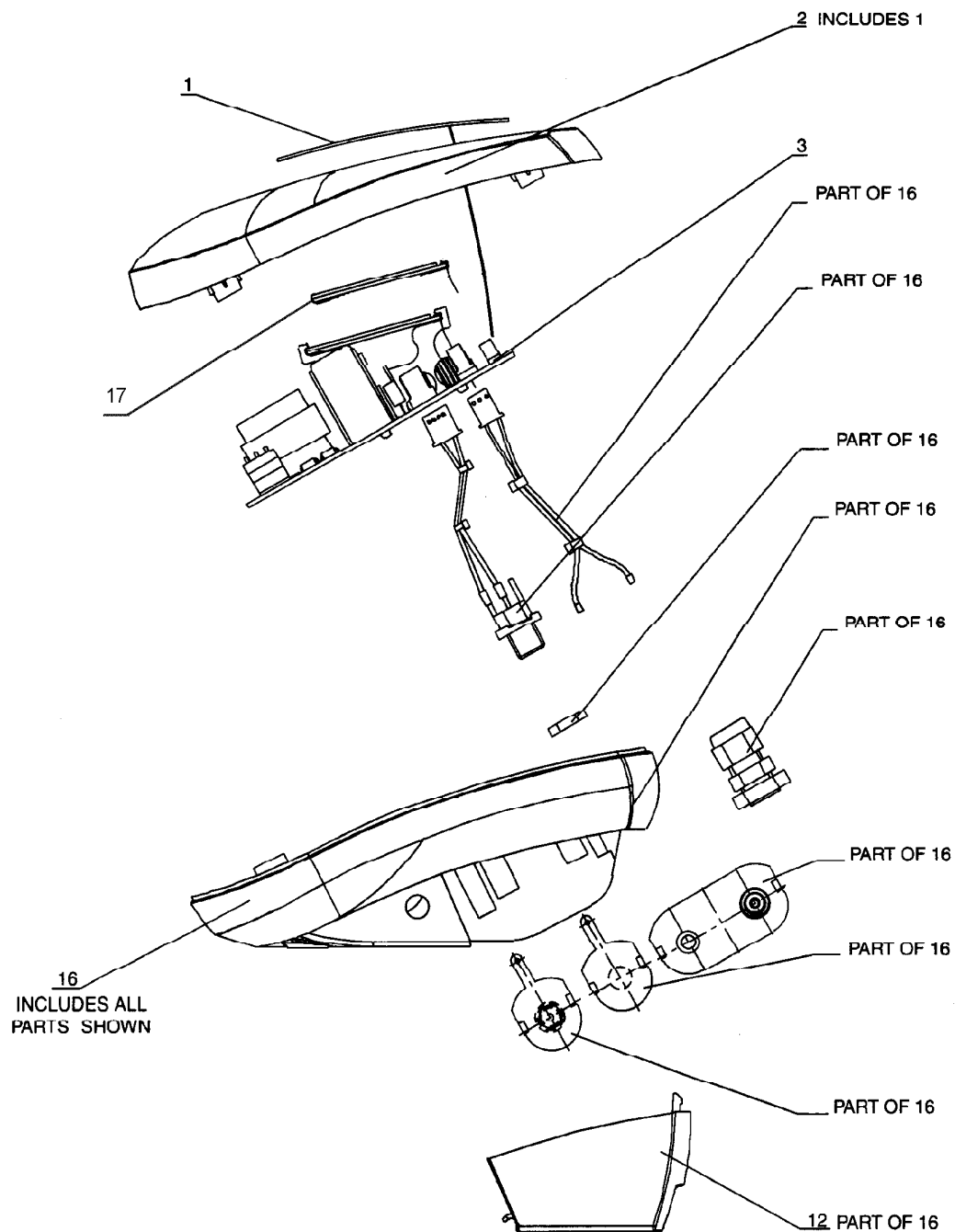


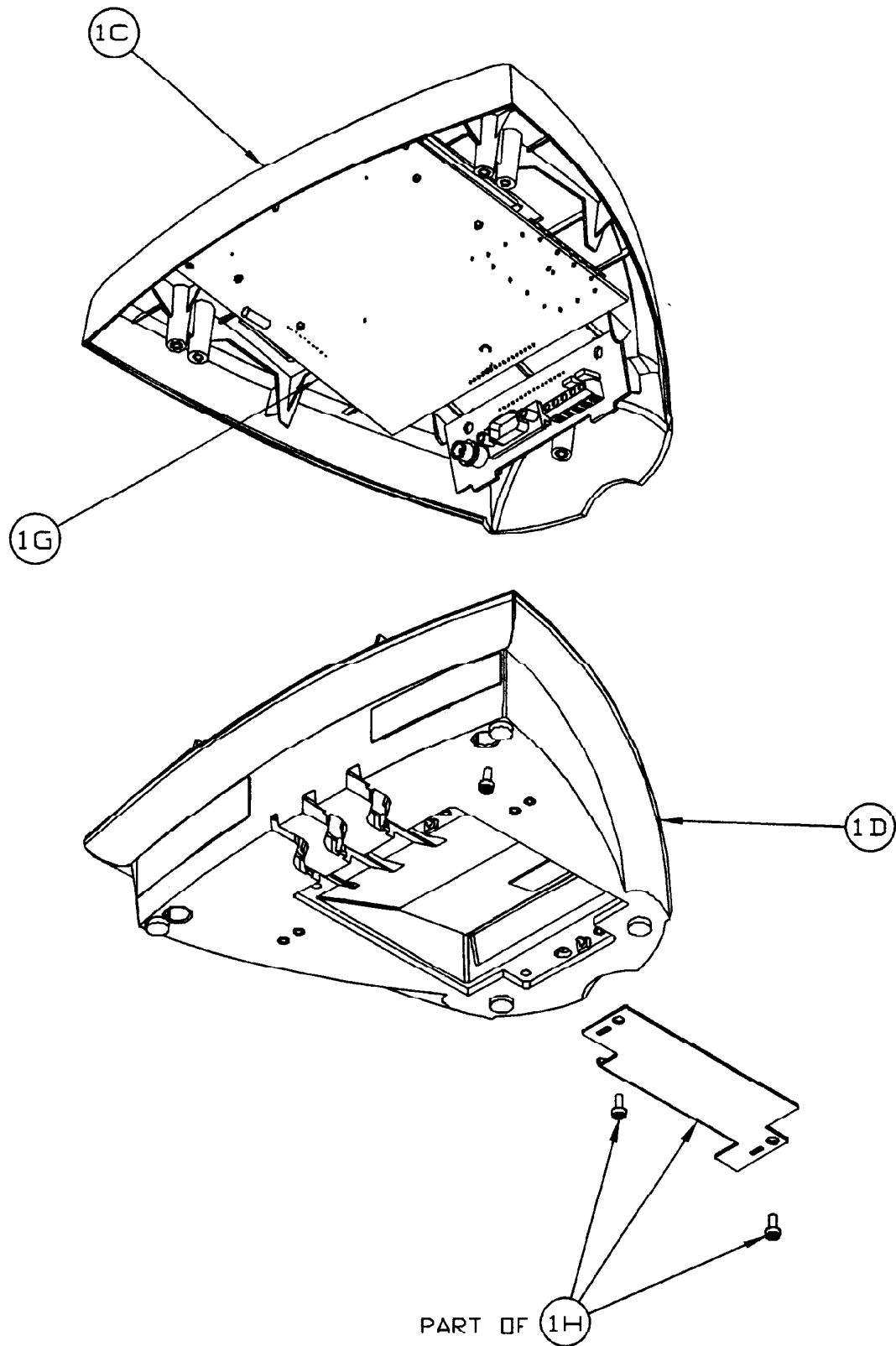
CD11, Fig. 5-1

Click on the key number of the part you are interested in, the part number will appear on the next page.



CD31, CD33, Fig. 5-2

Click on the key number of the part you are interested in, the part number will appear on the next page.





AfterMarket
Parts • Service • Support • Accessories

ServiceParts List

Series: CD Series Indicators

Status: Active

Model: CD11, CD31, CD33

Key	Figure	Part No.	Description
01	5-1	80250678	Membrane switch, CD11
02	5-1	80250676	Top Housing Includes membrane switch, CD11
03	5-1	80500451	PCB Assembly Complete, CD11
12	5-1	71127242	Battery Door, CD11
16	5-1	71132083	Bottom Housing Assembly, CD11
17	5-1	71156770	LCD Display(OIML), CD11, CW11
1C	5-2	80250640	Top Housing Includes membrane switch, CD31
1C	5-2	80250641	Top Housing Includes membrane switch, CD33
1D	5-2	80250642	Bottom Housing, CD31/33
1G	5-2	80500440	PCB Assembly Complete, CD31/33
1H	5-2	80250643	Small parts kit, CD31/33 Includes plate and screws
	5-2	80500435	120 V AC Adapter, US, CD11, 31/33, TR, TC, Mariner
	5-2	80500463	230 V AC Adapter, US plug CD11, 31/33
	5-2	80500436	230 V AC Adapter, EU, CD11, 31/33, TR, TC
	5-2	80500437	240 V AC Adapter, UK, CD11, 31/33, TR, TC
	5-2	80500438	Membrane Switch, CD31
	5-2	80500439	Membrane Switch, CD33
	5-2	71134038	Cable, PCB harness, CD31, 33
	5-2	71134036	LCD, CD31, 33
	5-2	80500462	240 V AC Adapter, AU, CD11, 31/33