



Intermec



Spare Parts
Catalog

**EasyCoder® PD41
and PD42 Printer**

Intermec Technologies Corporation

Worldwide Headquarters

6001 36th Ave.W.

Everett, WA 98203

U.S.A.

www.intermec.com

The information contained herein is provided solely for the purpose of allowing customers to operate and service Intermec-manufactured equipment and is not to be released, reproduced, or used for any other purpose without written permission of Intermec Technologies Corporation.

Information and specifications contained in this document are subject to change without prior notice and do not represent a commitment on the part of Intermec Technologies Corporation.

© 2008 by Intermec Technologies Corporation. All rights reserved.

The word Intermec, the Intermec logo, Norand, ArciTech, Beverage Routebook, CrossBar, dcBrowser, Duratherm, EasyADC, EasyCoder, EasySet, Fingerprint, INCA (under license), i-gistics, Intellitag, Intellitag Gen2, JANUS, LabelShop, MobileLAN, Picolink, Ready-to-Work, RoutePower, Sabre, ScanPlus, ShopScan, Smart Mobile Computing, SmartSystems, TE 2000, Trakker Antares, and Vista Powered are either trademarks or registered trademarks of Intermec Technologies Corporation.

There are U.S. and foreign patents as well as U.S. and foreign patents pending.

Contents

Before You Begin	v
Global Services and Support	v
Warranty Information	v
Web Support	v
Telephone Support	vi
Service Location Support	vi
Who Should Read This Manual	vii
Related Documents	vii

1 Introduction 1

Spare Parts Policy	2
EasyCoder PD41/PD42 General View	3

2 Spare Parts 5

Spare Parts Policy	6
Panel Module, Left (PD41)	7
Panel Module, Left (PD42)	8
Panels, Right	9
Print Unit Parts	10
Pressure Box and TPH Lever Kit	11
Thermal Printhead Module	12
Label Gap Sensor Module	13
Motor Module	14
Belt Tension Spring	15
Ribbon Module	16
Ribbon Out Module	17
Ink Position Knob	18
Edge Guide Kit	19
Main Board	20
Power Supply Unit	21

Contents

Plastic Feet	22
Ethernet Option	23
Parallel Card Option	24
Cutter	25
Rewinder	26
Compact Flash Cover Plate	27
Real Time Clock (PD42)	28

Before You Begin

This section provides you with safety information, technical support information, and sources for additional product information.

Global Services and Support

Warranty Information

To understand the warranty for your Intermec product, visit the Intermec web site at www.intermec.com and click **Support > Returns and Repairs > Warranty**.

Disclaimer of warranties: The sample code included in this document is presented for reference only. The code does not necessarily represent complete, tested programs. The code is provided “as is with all faults.” All warranties are expressly disclaimed, including the implied warranties of merchantability and fitness for a particular purpose.

Web Support

Visit the Intermec web site at www.intermec.com to download our current manuals (in PDF). To order printed versions of the Intermec manuals, contact your local Intermec representative or distributor.

Visit the Intermec technical knowledge base (Knowledge Central) at www.intermec.com and click **Support > Knowledge Central** to review technical information or to request technical support for your Intermec product.

Telephone Support

These services are available from Intermec.

Services	Description	In the USA and Canada call 1-800-755-5505 and choose this option
Order Intermec products	<ul style="list-style-type: none">Place an order.Ask about an existing order.	1 and then choose 2
Order Intermec media	Order printer labels and ribbons.	1 and then choose 1
Order spare parts	Order spare parts.	1 or 2 and then choose 4
Technical Support	Talk to technical support about your Intermec product.	2 and then choose 2
Service	<ul style="list-style-type: none">Get a return authorization number for authorized service center repair.Request an on-site repair technician.	2 and then choose 1
Service contracts	<ul style="list-style-type: none">Ask about an existing contract.Renew a contract.Inquire about repair billing or other service invoicing questions.	1 or 2 and then choose 3

Outside the U.S.A. and Canada, contact your local Intermec representative. To search for your local representative, from the Intermec web site, click **About Us > Contact Us**.

Service Location Support

For the most current listing of service locations, click **Support > Returns and Repairs > Repair Locations**.

For technical support in South Korea, use the after service locations listed below:

AWOO Systems

102-1304 SK Ventium

522 Dangjung-dong

Gunpo-si, Gyeonggi-do Korea, South 435-776

Contact: Mr. Sinbum Kang

Telephone: +82-31-436-1191

E-mail: sbkang@awoo.co.kr

IN Information System PTD LTD

6th Floor

Daegu Venture Center Bldg 95

Shinchun 3 Dong

Donggu, Daegu City, Korea

E-mail: jmyou@idif.co.kr or korlim@gw.idif.co.kr

Who Should Read This Manual

This document is written for the person who is responsible for installing, configuring, and maintaining the PD41/PD42 printer. Before you work with this printer, you should be familiar with the product in which you will be working on.

Related Documents

The Intermec web site at www.intermec.com contains our documents (as PDF files) that you can download for free.

To download documents

- 1 Visit the Intermec web site at www.intermec.com.
- 2 Click **Support > Manuals**.
- 3 In the **Select a Product** field, choose the product whose documentation you want to download.

To order printed versions of the Intermec manuals, contact your local Intermec representative or distributor.



1 Introduction

This chapter provides an introduction to the EasyCoder PD41 and PD42 Printer Spare Parts Catalog and includes these sections:

- Spare Parts Policy
- EasyCoder PD41/PD42 General View

Spare Parts Policy

This spare parts catalog contains information on items currently available as spare parts and accessories for the Intermec EasyCoder PD41/PD42 printer.

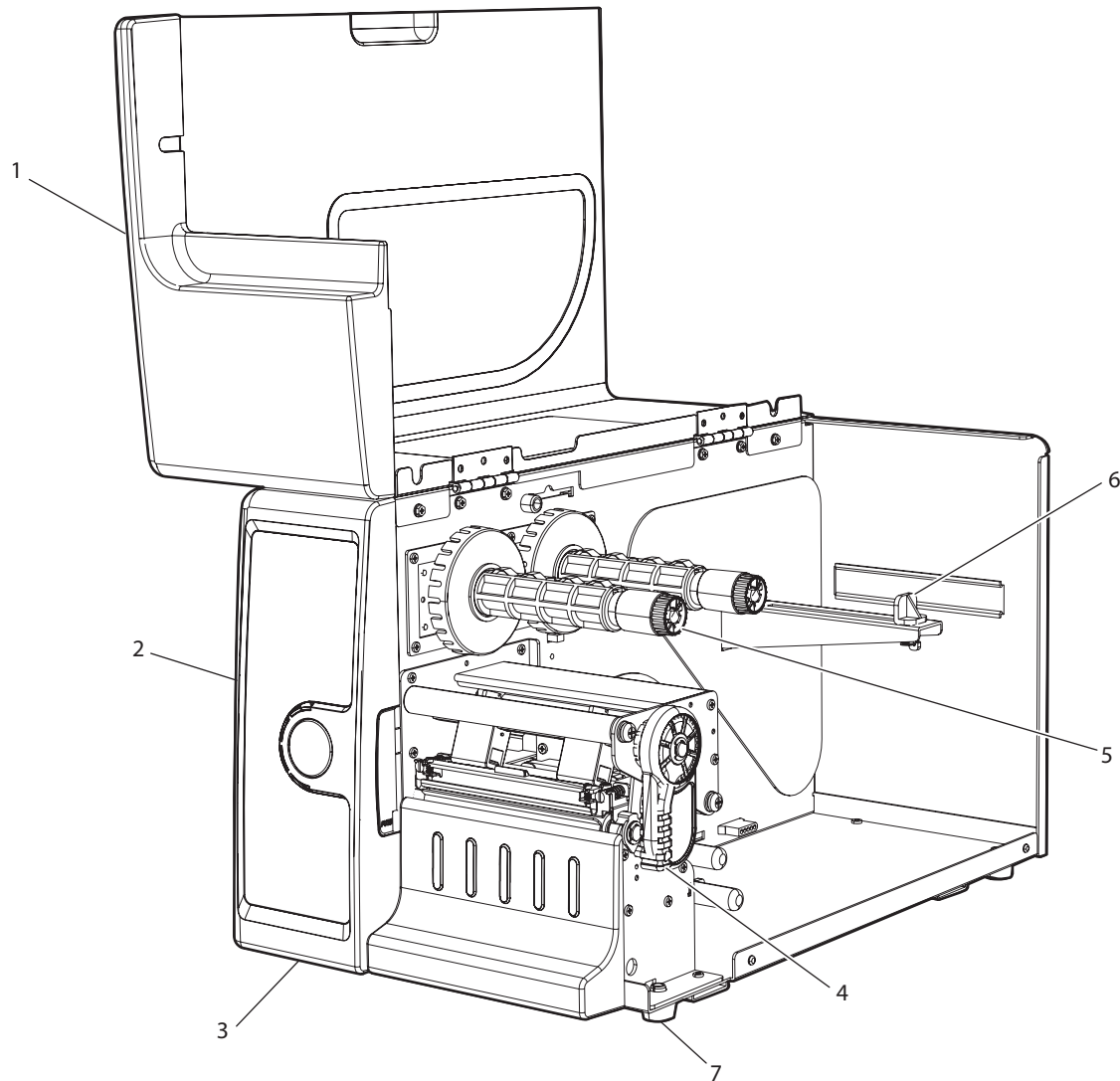
For further information about parts not listed in this document, please contact Intermec's spare parts sales department for more information.

Information in this manual is subject to change without prior notice and does not represent a commitment on the part of Intermec.



Note: For updated information, refer to the latest edition of the Spare Parts Price List.

EasyCoder PD41/PD42 General View



Callout	Description	Remarks
1	Panels, right hand side	
2	Panel module, left	
3	Panel, bottom right	
4	Print mechanism	
5	Transfer ribbon mechanism	
6	Edge guides	
-	Main board	
-	Power supply unit	
7	Plastic foot	
-	Options	



2 Spare Parts

This chapter shows the various spare parts for the EasyCoder PD41/42 printer, and lists their part numbers. The text in the description field is not the same as the text on drawings, packing slips, and invoices.

Spare Parts Policy

This spare parts catalog contains information on items currently available as spare parts and accessories for the Intermec EasyCoder PD41/PD42 printer.

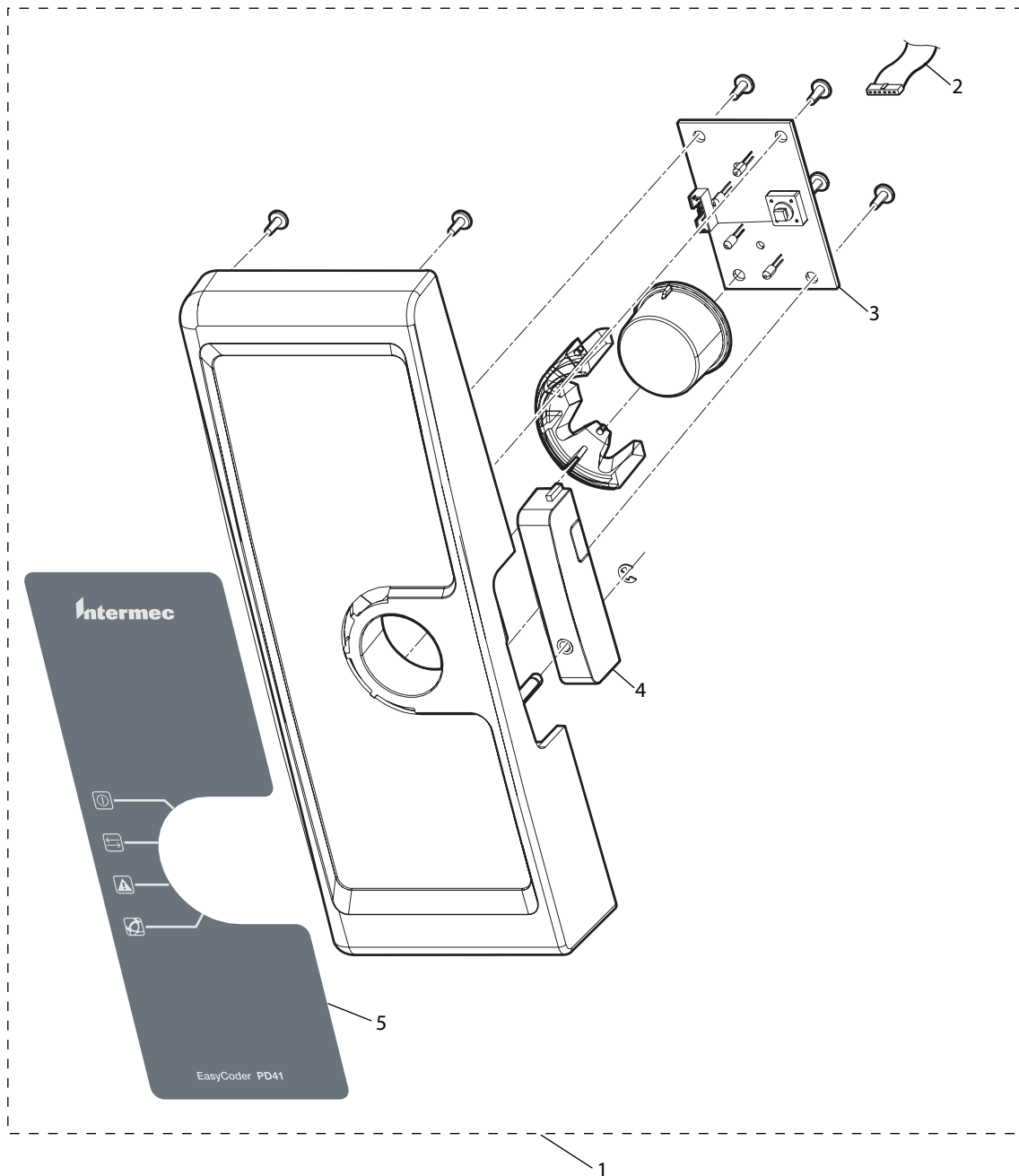
For further information about parts not listed in this document, please contact Intermec's spare parts sales department for more information.

Information in this manual is subject to change without prior notice and does not represent a commitment on the part of Intermec.



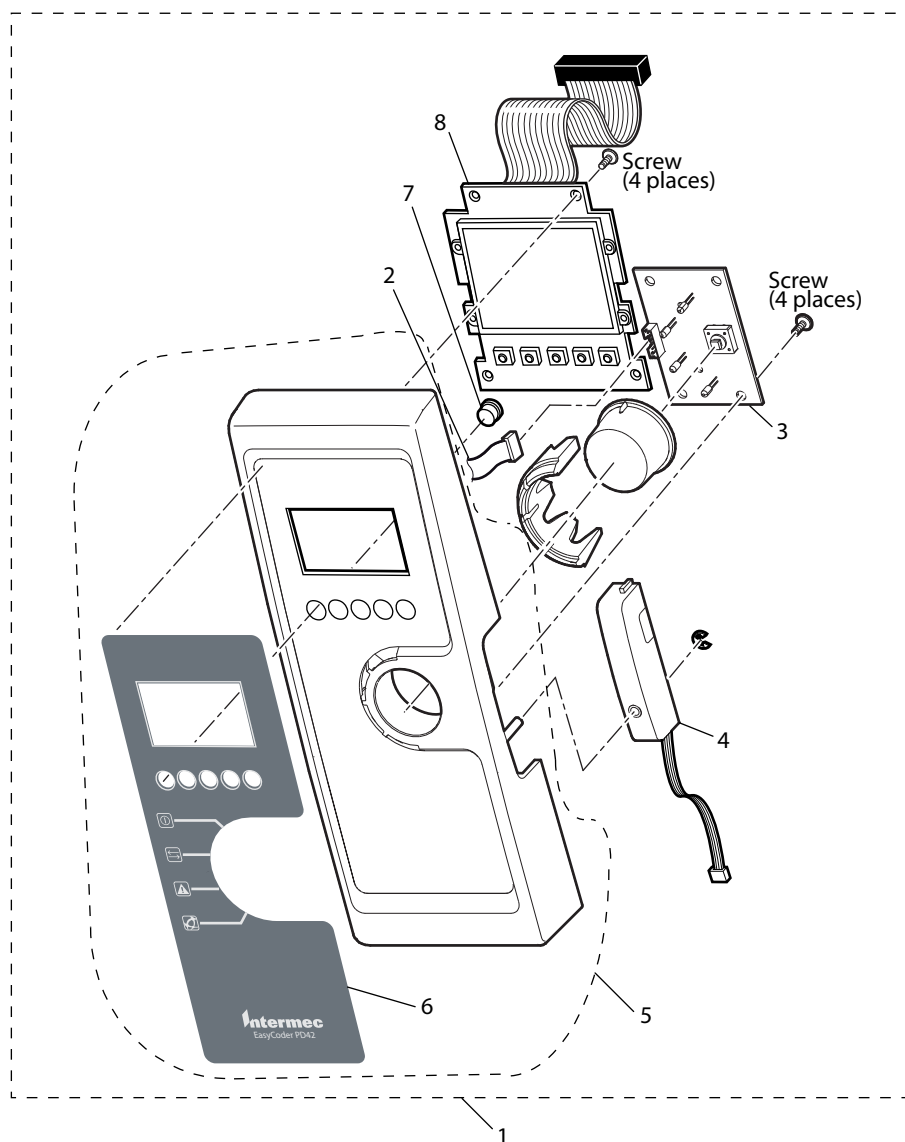
Note: For updated information, refer to the latest edition of the Spare Parts Price List.

Panel Module, Left (PD41)



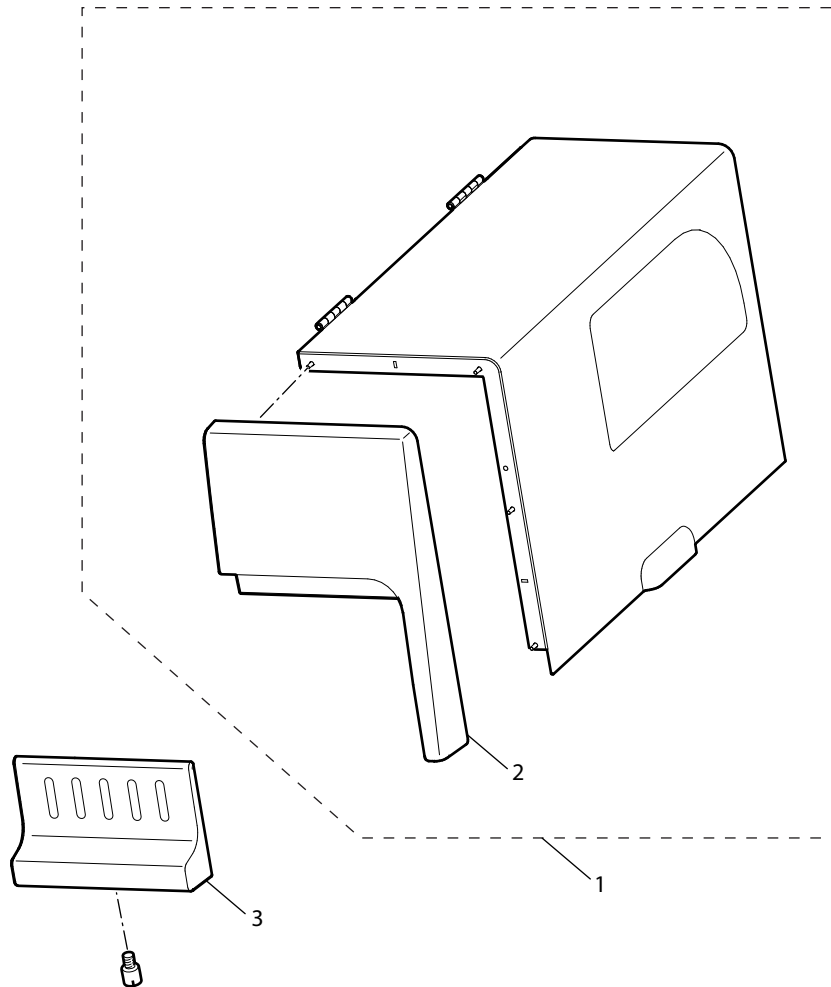
Callout	Part Number	Description	Remarks
1	1-207039-900	Panel module, left (PD41)	Complete unit
2	141-000112-902	Cable	Display console board to main board.
3	1-971163-900	Console board	
4	151-000026-902	Label-taken sensor kit	Including cable.
5	1-207054-001	Overlay, front panel	

Panel Module, Left (PD42)



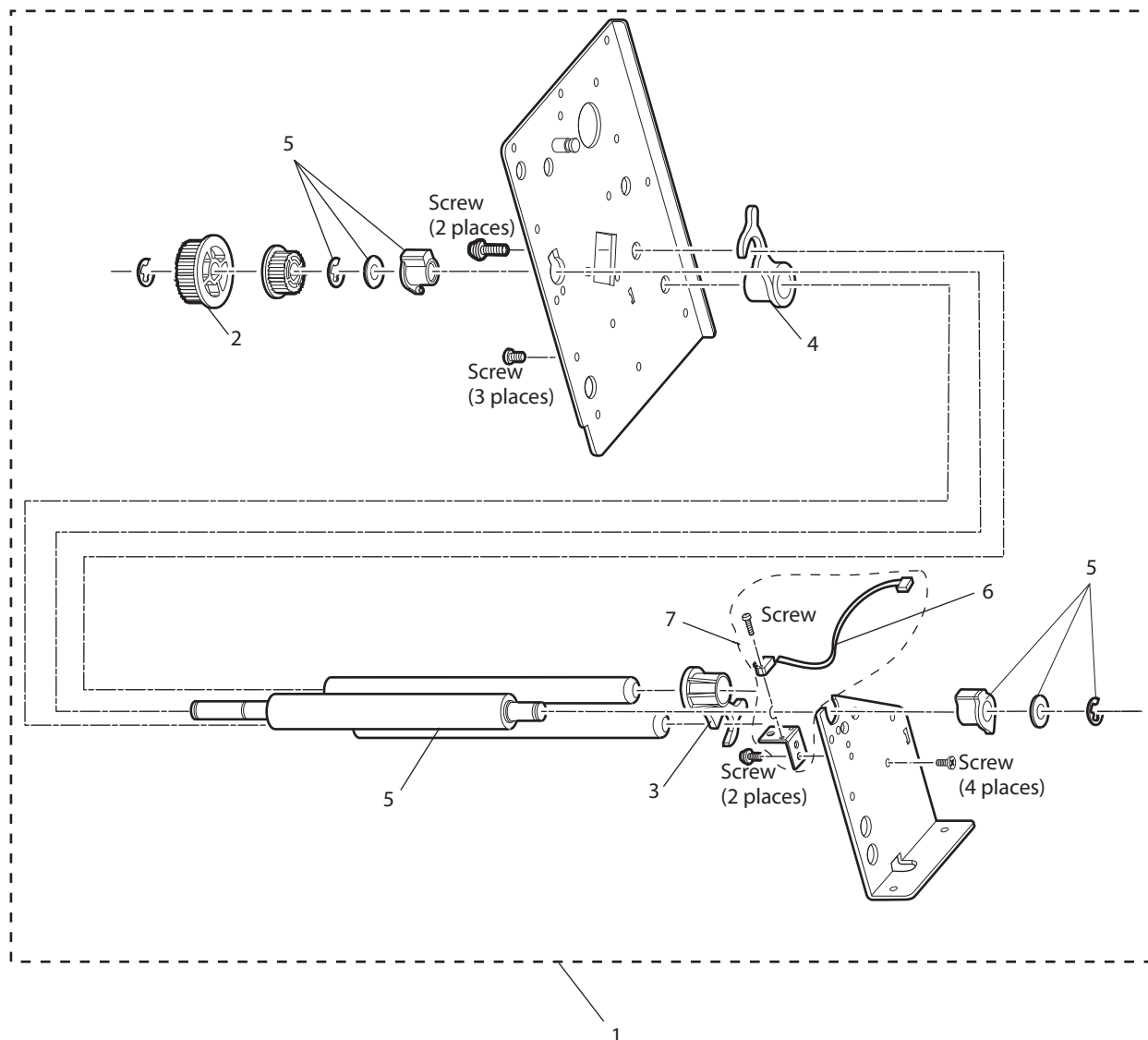
Callout	Part Number	Description	Remarks
1	1-207132-001	Panel module, left (PD42)	Complete unit.
2	141-000112-902	Cable	Display console board to main board.
3	1-971163-900	Console board	
4	151-000026-902	Label-taken sensor kit	Including cable.
5	1-207133-001	Front panel with overlay assembly	
6	1-207134-001	Overlay, front panel	
7	1-207144-001	Button Display	Comes with one button only (requires 5).
8	160-000186-000	LCD PCB assembly with cable	

Panels, Right



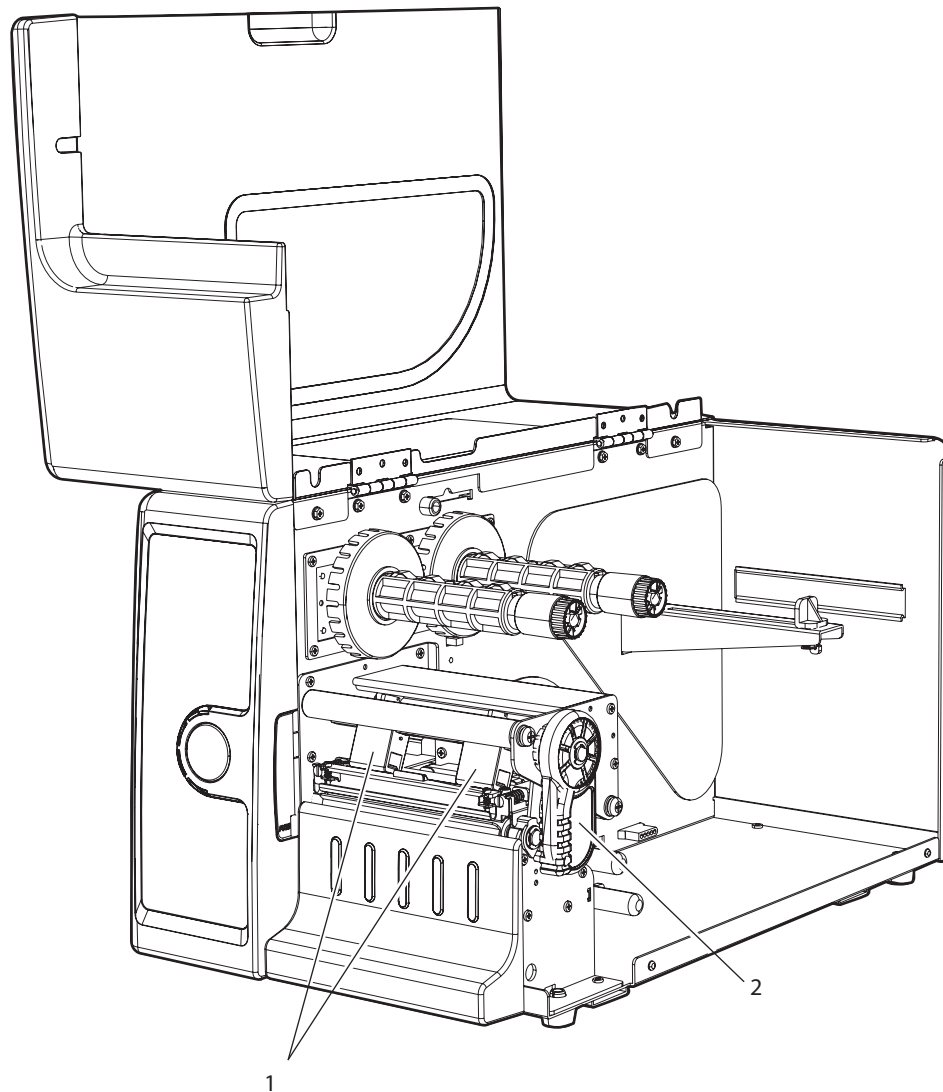
Callout	Part Number	Description	Remarks
1	1-207070-900	Right-hand door	Complete unit including hinges.
2	1-207046-900	Top right panel	Display console board to main board.
3	1-207047-900	Bottom right front lid	Includes thumbscrew.

Print Unit Parts



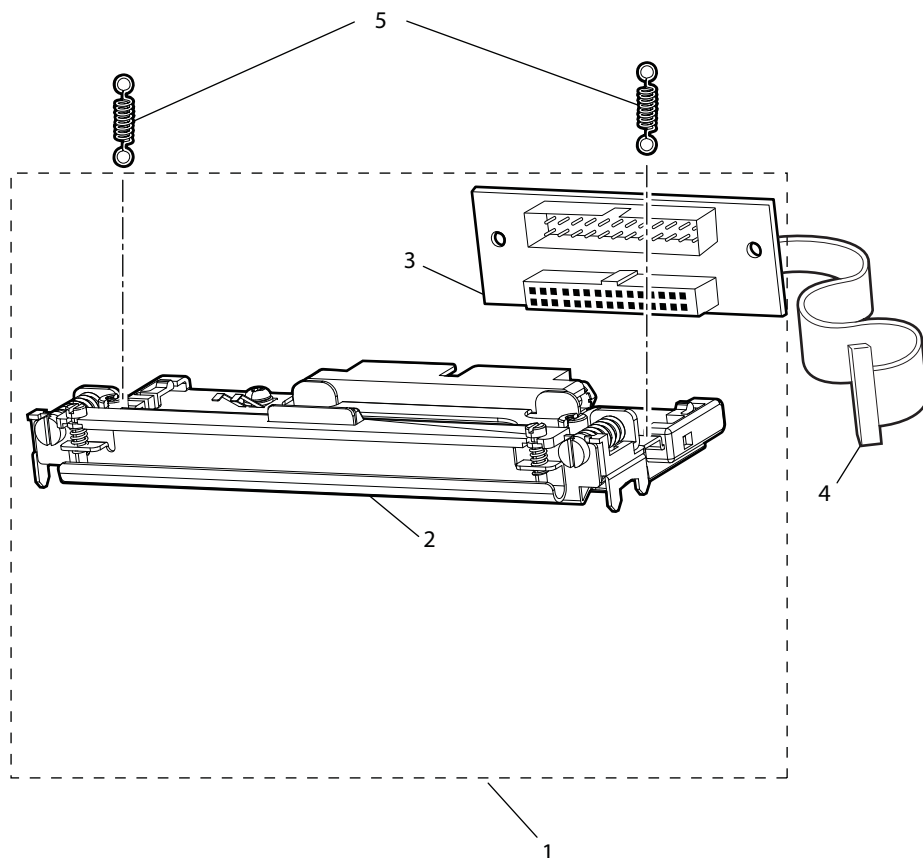
Callout	Part Number	Description	Remarks
1	141-000133-902	Print unit assembly	The print unit assembly includes the pressure box assembly and TPH lever kit, as shown on page 11.
2	701-001600-001	Pulley 44 tooth gear	
3	700-035903-001	Media guide, inner	
4	700-030503-001	Media guide, outer	
5	141-000054-902	Platen module	
6	162-000008-002	Headlift sensor with cable	
7	141-000131-902	Headlift sensor with cable and bracket	

Pressure Box and TPH Lever Kit



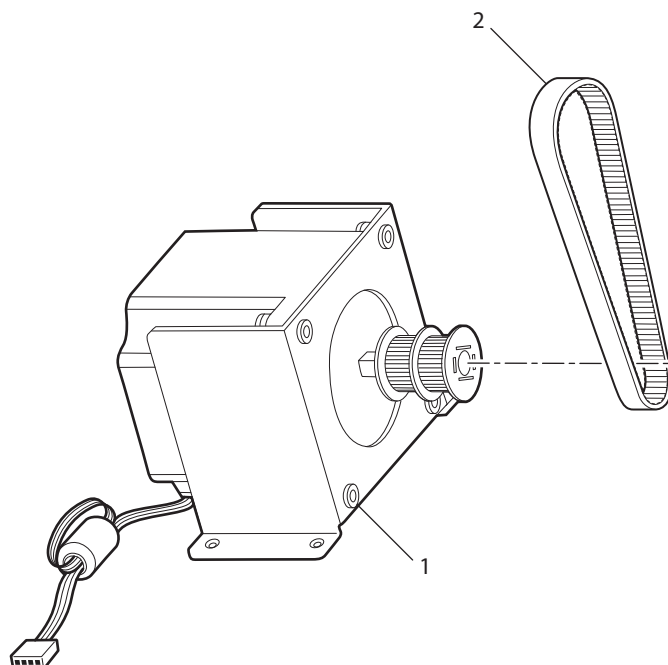
Callout	Part Number	Description	Remarks
1	141-000124-902	Pressure box assembly	Includes quantity of 2.
2	141-000126-902	TPH lever kit	

Thermal Printhead Module



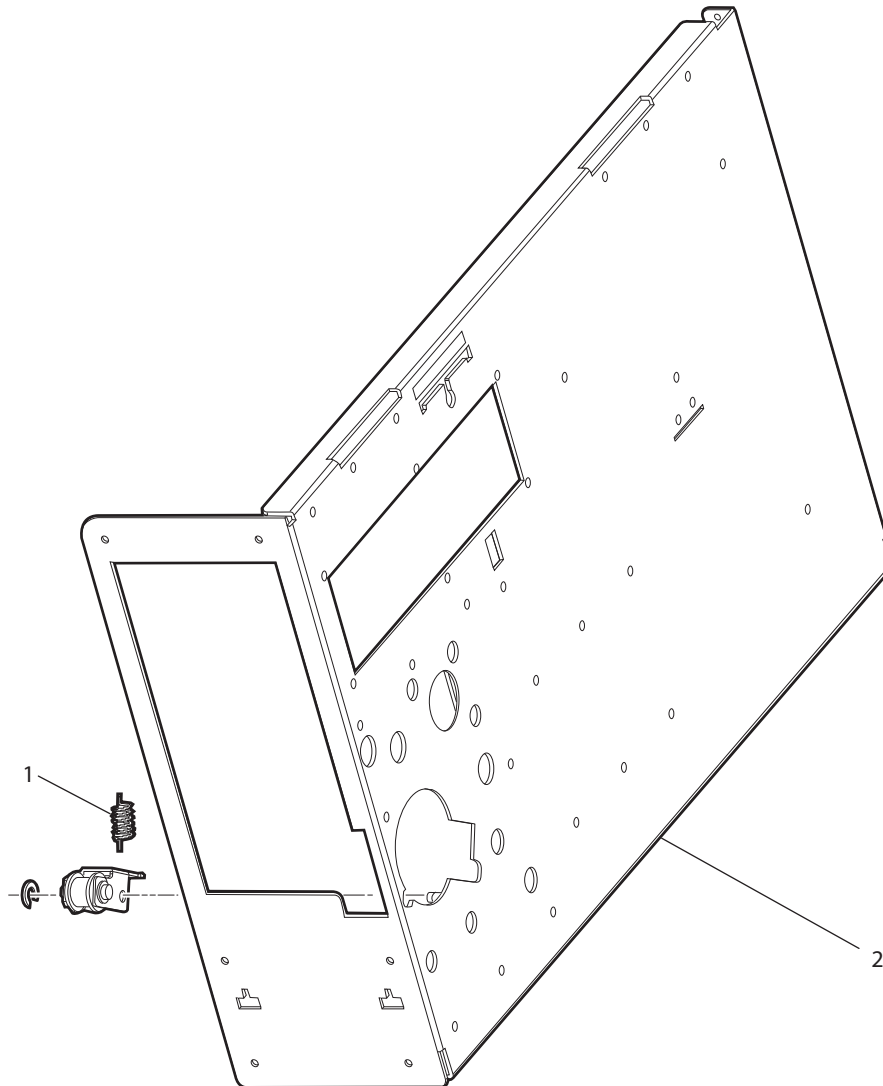
Callout	Part Number	Description	Remarks
1	1-010105-900	Thermal printhead 200 dpi kit	Does not include printhead lift springs, and adapter cable.
1	1-010106-900	Thermal printhead 300 dpi kit	
2	141-000044-962	TPH module 200 dpi	
2	141-000045-962	TPH module 300 dpi	
3	141-000106-902	TPH PCB 200 dpi	
3	141-000107-902	TPH PCB 300 dpi	
4	141-000110-902	Cable, PCB to main board	Same cable for 200 and 300 dpi versions.
5	141-000125-902	Printhead lift springs	Includes 2 springs.

Motor Module



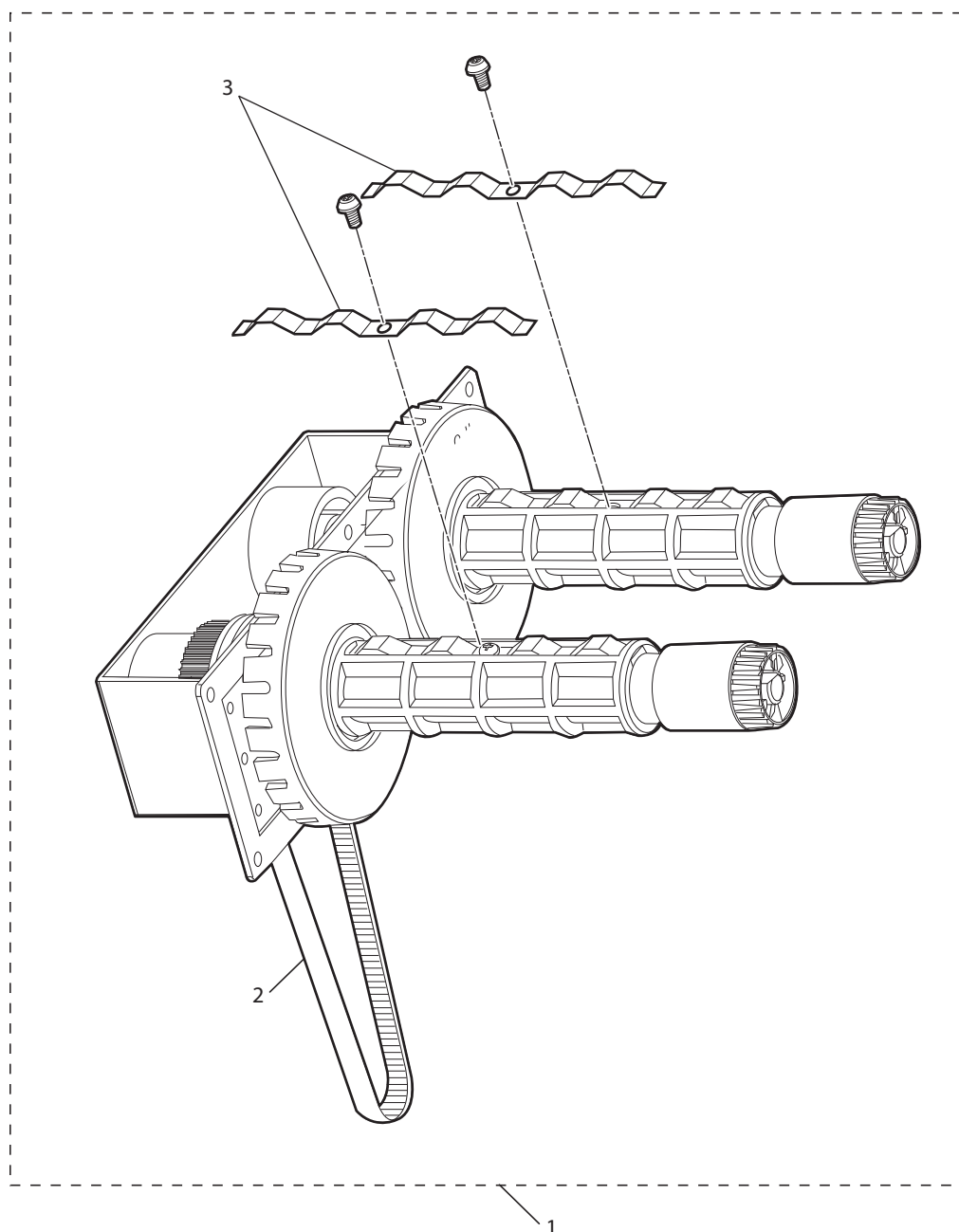
Callout	Part Number	Description	Remarks
1	141-000108-902	Stepper motor module	Complete unit includes cable.
2	703-027700-001	Belt, 100MXL	

Belt Tension Spring



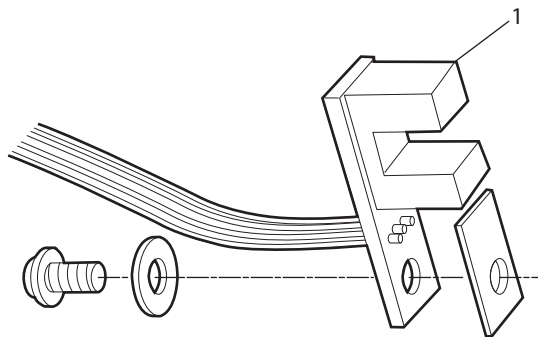
Callout	Part Number	Description	Remarks
1	712-027300-001	Belt tension spring	
2	024-005002-00	Center section	Includes post, hook, guide plate, and edge guide kit from page 19.

Ribbon Module



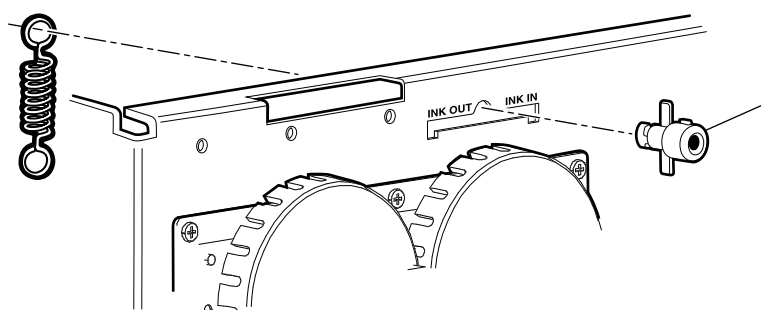
Callout	Part Number	Description	Remarks
1	141-000024-982	Ribbon Module	Complete unit includes belt and spring blades.
2	703-027800-011	Belt, 160MXL025	
3	710-027900-001	Ribbon core spring blade	Screws not included.

Ribbon Out Module



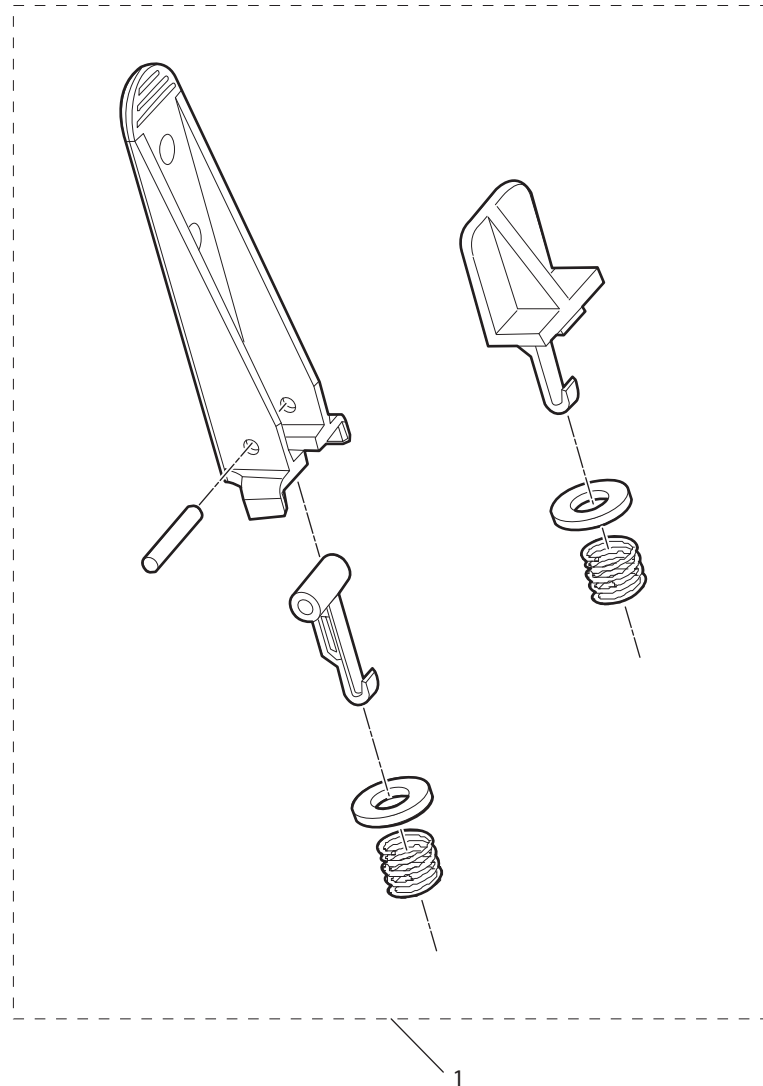
Callout	Part Number	Description	Remarks
1	141-000052-902	Sensor, ribbon out, module	Includes cable.

Ink Position Knob



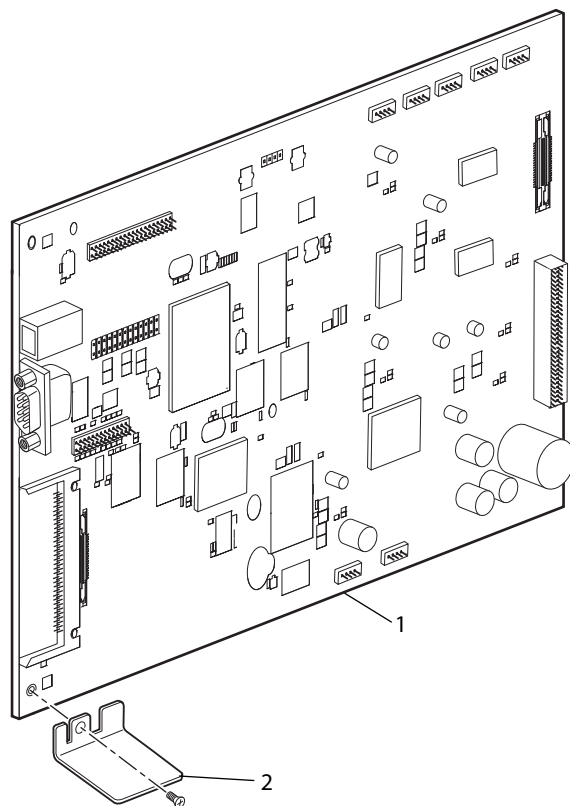
Callout	Part Number	Description	Remarks
1	141-000075-982	Ink position knob	Includes spring.

Edge Guide Kit



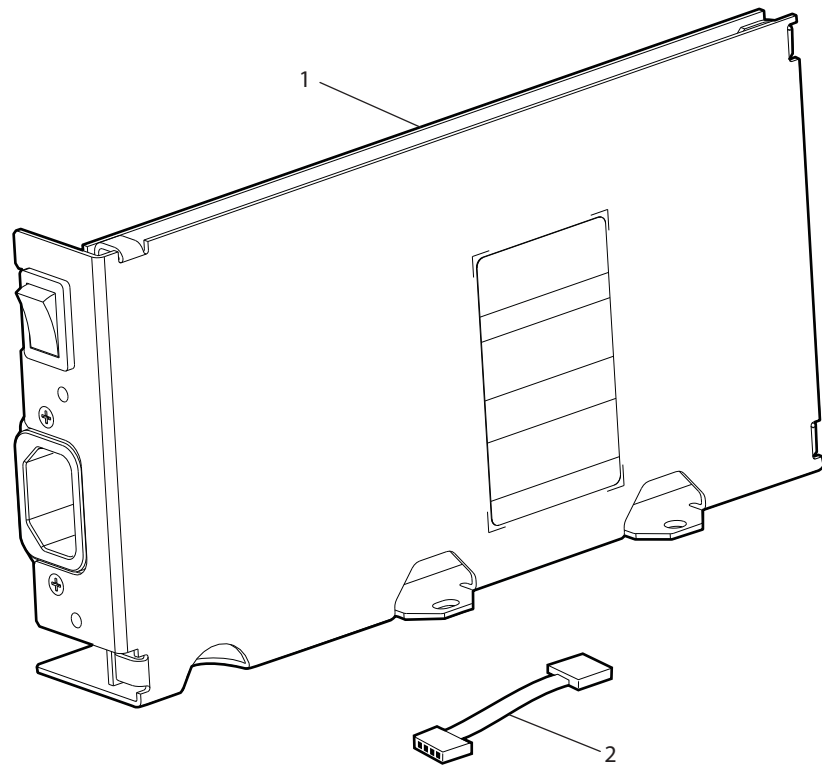
Callout	Part Number	Description	Remarks
1	141-000070-952	Edge guide kit	Comes with both the high and low edge guides.

Main Board



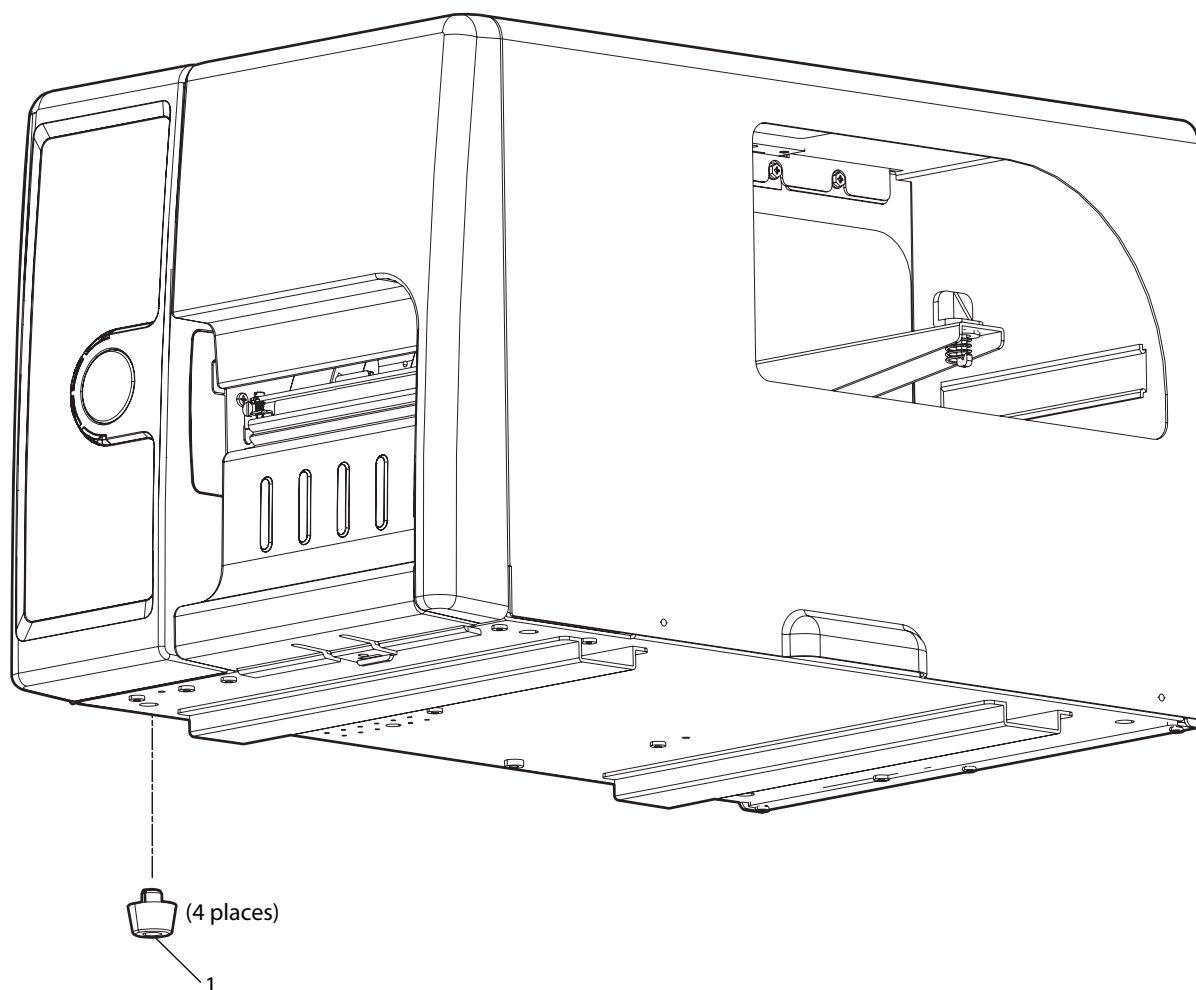
Callout	Part Number	Description	Remarks
1	1-971161-900	PCB main module (PD41)	
1	160-000196-000	PCB main module (PD42)	
2	1-207124-900	Protective cover	

Power Supply Unit



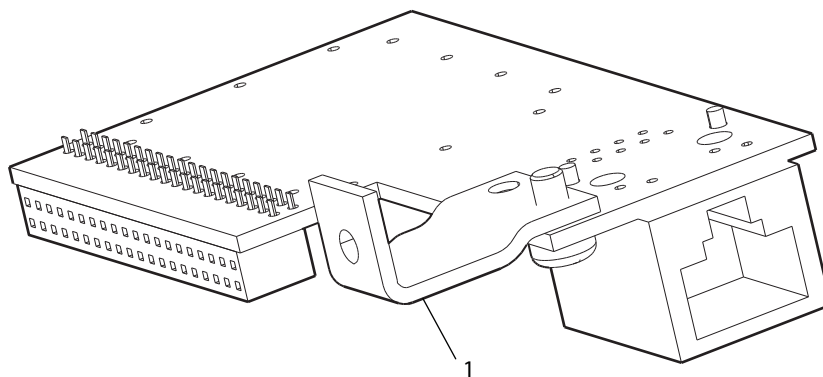
Callout	Part Number	Description	Remarks
1	1-971166-900	Power supply unit	Complete unit.
2	141-000113-902	Cable, power supply unit to main board	

Plastic Feet



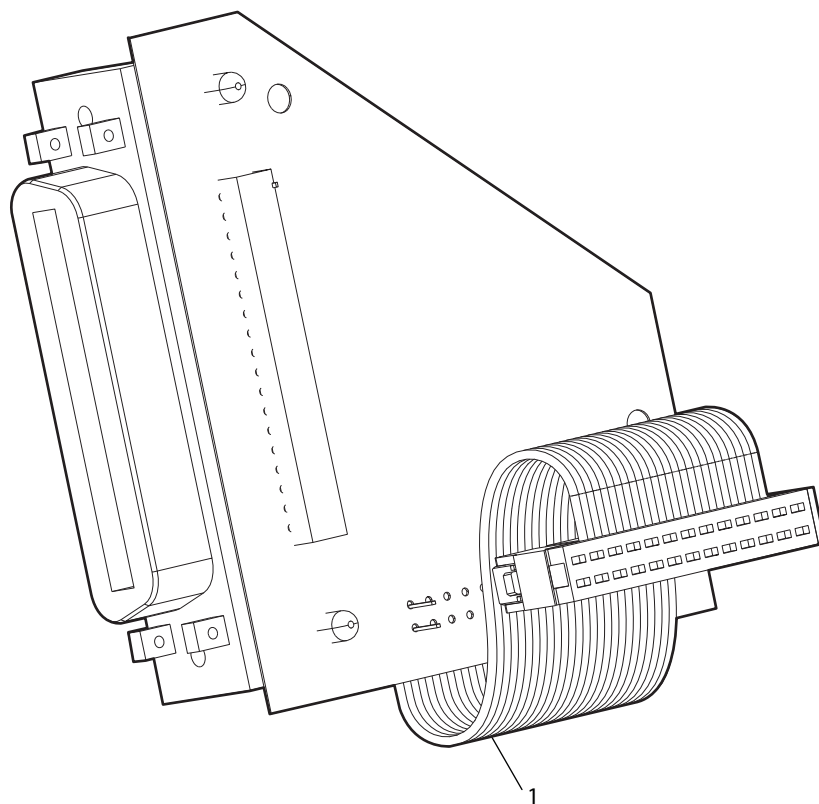
Callout	Part Number	Description	Remarks
1	1-207089-900	Plastic feet	Includes 4 pieces.

Ethernet Option



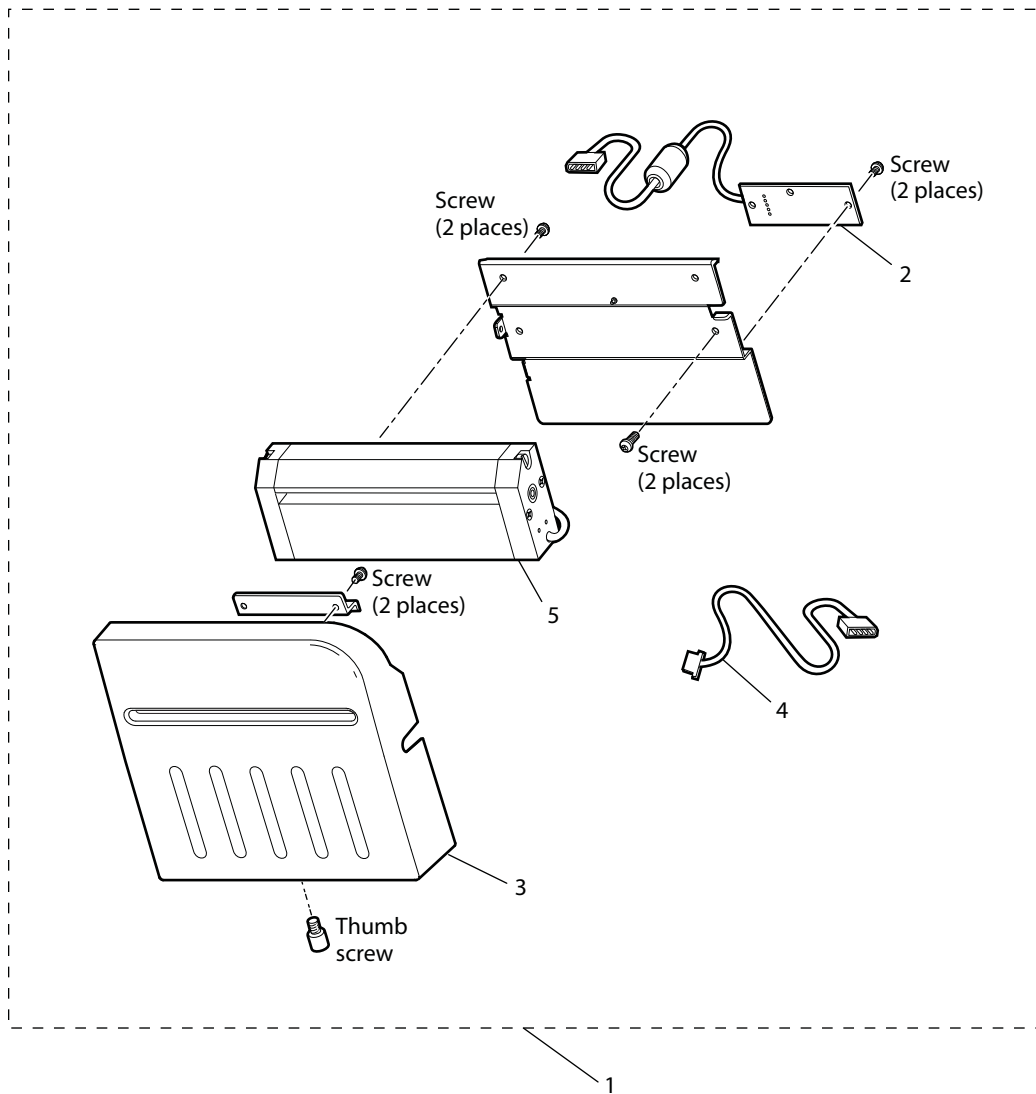
Callout	Part Number	Description	Remarks
1	1-971165-800	EasyLAN Ethernet option	

Parallel Card Option



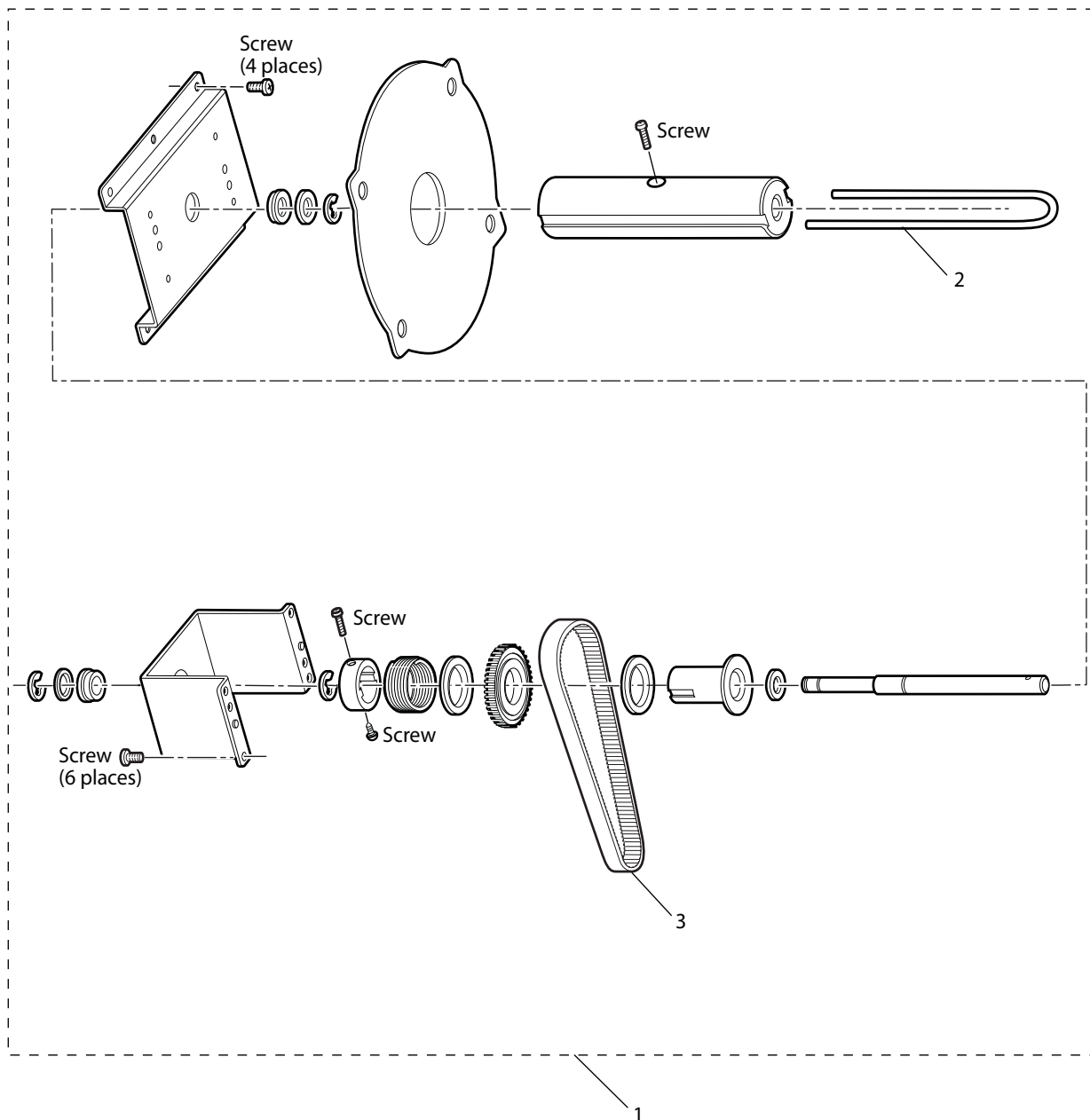
Callout	Part Number	Description	Remarks
1	1-971164-800	Parallel card option	Centronics, IEEE 1284

Cutter



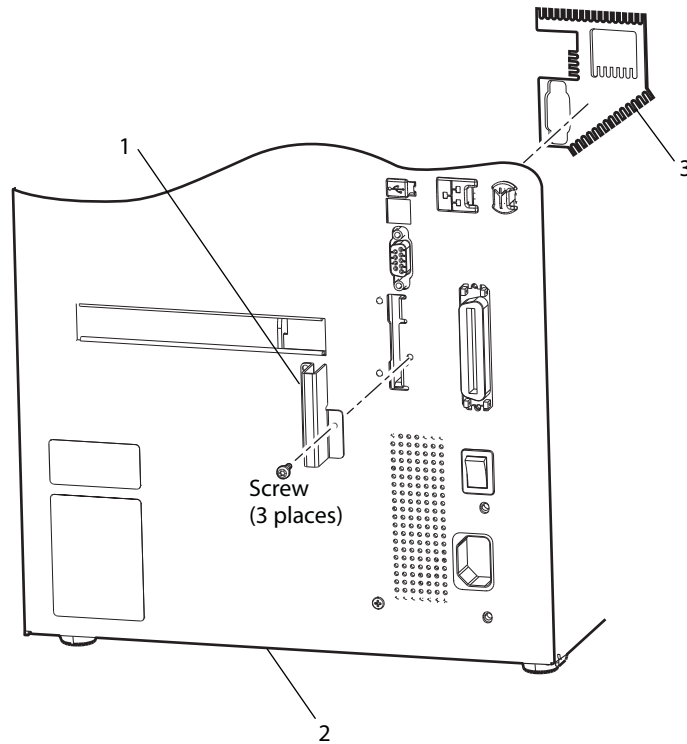
Callout	Part Number	Description	Remarks
1	1-207109-801	Cutter module	Complete unit.
2	160-000064-202	Cutter PCB	Includes cable for the PCB to main plate.
3	1-207050-900	Cutter front lid, plastic moulding	Includes thumbscrew.
4	141-000111-902	Cable cutter, main board to center plate	
5	1-209109-001	Cutter module	Not orderable.

Rewinder



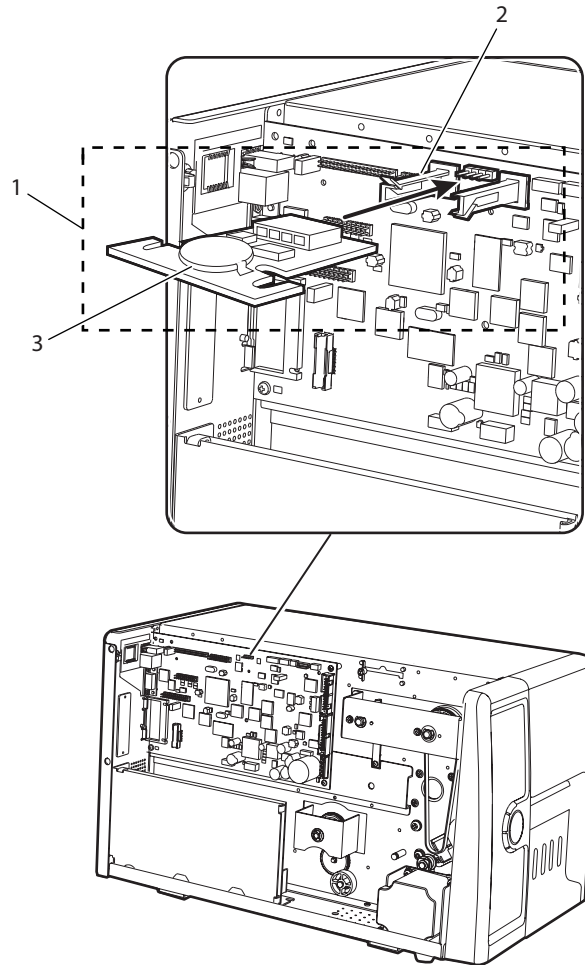
Callout	Part Number	Description	Remarks
1	1-207084-800	Rewinder module, internal	Included is the liner retention guide. Rewinder drive belt is not included.
2	074060-001	Liner retention clip	
3	703-027800-021	Rewind drive belt, 140MXL025	

Compact Flash Cover Plate



Callout	Part Number	Description	Remarks
1	1-206179-01	Compact Flash cover plate	
2	1-207044-050	Rear plate	
3	1-207111-900	ESD plate, mounted on inside of case	

Real Time Clock (PD42)



Callout	Part Number	Description	Remarks
1	034-005001-000	Real time clock module kit	Includes stand-offs.
2	760-005700-001	PCB card guide	Includes 2 stand-offs.
3	160-000187-000	Real time clock module	



Worldwide Headquarters
6001 36th Avenue West
Everett, Washington 98203
U.S.A.

tel 425.348.2600

fax 425.355.9551

www.intermec.com

EasyCoder PD41 and PD42 Spare Parts Catalog



P/N 1-960665-02