



Installation and Setup Instructions

TE 2000™

Intermec Technologies Corporation

Worldwide Headquarters	Cedar Rapids Technical Communications
6001 36th Ave. W.	550 Second Street SE
Everett, WA 98203	Cedar Rapids, IA 52401
U.S.A.	U.S.A.

www.intermec.com

The information contained herein is proprietary and is provided solely for the purpose of allowing customers to operate and service Intermec-manufactured equipment and is not to be released, reproduced, or used for any other purpose without written permission of Intermec.

Information and specifications contained in this document are subject to change without prior notice and do not represent a commitment on the part of Intermec Technologies Corporation.

© 2003-2006 by Intermec Technologies Corporation. All rights reserved.

The word Intermec, the Intermec logo, Norand, ArciTech, Beverage Routebook, CrossBar, dcBrowser, Duratherm, EasyADC, EasyCoder, EasySet, Fingerprint, i-gistics, INCA (under license), Intellitag, Intellitag Gen2, JANUS, LabelShop, MobileLAN, Picolink, Ready-to-Work, RoutePower, Sabre, ScanPlus, ShopScan, Smart Mobile Computing, SmartSystems, TE 2000, Trakker Antares, and Vista Powered are either trademarks or registered trademarks of Intermec Technologies Corporation.

Throughout this manual, trademarked names may be used. Rather than put a trademark (™ or ®) symbol in every occurrence of a trademarked name, we state that we are using the names only in an editorial fashion, and to the benefit of the trademark owner, with no intention of infringement.

There are U.S. and foreign patents pending.

Document Change Record

This page records changes to this document. The document was originally released as Revision A.

Revision	Date	Description of Change
D	03/2005	Added information that pertain to the CK30 and CK31 Handheld Computers, the CV60 Vehicle Mount Computer, and the Avalanche Management Console application. Removed references to the 700 Monochrome Computer.
E	02/2006	Added information about the SmartSystems application, removed references to iBrowse, iLaunch, and SIP Designer applications.

Contents

Before You Begin	ix
Safety Information	ix
Global Services and Support	ix
Warranty Information	ix
Web Support	ix
Telephone Support	x
Key Mappings	x
Quick Start	xi
Installing TE 2000	xi
Preparation	xi
Using Intermec Settings to Configure Networking (700 Color, CK31, CV60)	xii
Distributing TE 2000 to Your Computer	xii
Wavelink Avalanche	xiii
Microsoft ActiveSync	xiii
Removable Storage (700 Color, CK30, CK31)	xiii
FTP Transfer (700 Color, CK30)	xiv
SmartSystems	xiv
Minimum Settings Necessary for Usability	xiv
Exiting TE 2000	xvi
About Using the TE 2000 Application on Intermec Computers	1
Installing onto Your Desktop or Laptop	1
Starting the Installation	1
Installing into the SmartSystems Console	4
Installing the 700 Color Series Package	4
Installing the CK30 and CK31 Package	5
Installing the CV60 Package	5
Completing the Installation	6
Installing TE 2000 Onto Your Computer	6
700 Color Mobile Computers	6
CK30 and CK31 Handheld Computers	8
CV60 Vehicle Mount Computers	10
Configuring TE 2000 on Your Computer	11
700 Color Mobile Computer	11
Starting the TE 2000 Application	12
Minimum Settings Necessary for Usability	12
Exiting TE 2000	13
CK30 and CK31 Handheld Computers	13
Configuring the TE 2000 Data Stream	13
Entering Server IP Address	14
Exiting the TE 2000 Application	15
Restarting the TE 2000 Application	15

Contents

CV60 Vehicle Mount Computers	15
Starting the TE 2000 Application	15
Entering a Host IP Address	15
Configuring the TE 2000 Data Stream	16
Restarting the TE 2000 Application	17
Exiting the TE 2000 Application	17
Using Intermec Settings to Configure Computer Options	17
700 Color Mobile Computer	17
CK31 Handheld Computers	18
CV60 Vehicle Mount Computer	18
Using Wavelink Avalanche	19
Installing a TE 2000 AVA Package onto Your Desktop	19
Installing a Config AVA Package onto Your Desktop	22
Configuring the Intermec Settings using Wavelink Avalanche	25
Updating the Computer from the Avalanche Console	27
Enabling the Package on the Computer	29
Using Microsoft ActiveSync	29
Establishing a Partnership	30
If Upgrading the 700 Color Computer	30
If Upgrading the CK30 or CK31 Computer	30
Connecting Your Computer to Your Desktop or Laptop	31
Using Microsoft ActiveSync to Copy Files	35
Using Intermec SmartSystems	36

Before You Begin

This section provides you with safety information, technical support information, and sources for additional product information.

Safety Information

Your safety is extremely important. Read and follow all warnings and cautions in this document before handling and operating Intermec equipment. You can be seriously injured, and equipment and data can be damaged if you do not follow the safety warnings and cautions.

This section explains how to identify and understand dangers, warnings, cautions, and notes that are in this manual. You may also see icons that tell you when to follow ESD procedures and when to take special precautions for handling optical parts.



A warning alerts you of an operating procedure, practice, condition, or statement that must be strictly observed to avoid death or serious injury to the persons working on the equipment.



A caution alerts you to an operating procedure, practice, condition, or statement that must be strictly observed to prevent equipment damage or destruction, or corruption or loss of data.



Note: Notes either provide extra information about a topic or contain special instructions for handling a particular condition or set of circumstances.

Global Services and Support

Warranty Information

To understand the warranty for your Intermec product, visit the Intermec web site at www.intermec.com and click **Service & Support**. The Intermec Global Sales & Service page appears. From the **Service & Support** menu, move your pointer over **Support**, and then click **Warranty**.

Disclaimer of warranties: The sample code included in this document is presented for reference only. The code does not necessarily represent complete, tested programs. The code is provided “as is with all faults.” All warranties are expressly disclaimed, including the implied warranties of merchantability and fitness for a particular purpose.

Web Support

Visit the Intermec web site at www.intermec.com to download our current manuals in PDF format. To order printed versions of the Intermec manuals, contact your local Intermec representative or distributor.

Visit the Intermec technical knowledge base (Knowledge Central) at intermec.custhelp.com to review technical information or to request technical support for your Intermec product.

Telephone Support

These services are available from Intermec Technologies Corporation.

Service	Description	In the U.S.A. and Canada call 1-800-755-5505 and choose this option
Order Intermec products	<ul style="list-style-type: none"> • Place an order. • Ask about an existing order. 	1 and then choose 2
Order Intermec media	Order printer labels and ribbons.	1 and then choose 1
Order spare parts	Order spare parts.	1 or 2 and then choose 4
Technical Support	Talk to technical support about your Intermec product.	2 and then choose 2
Service	<ul style="list-style-type: none"> • Get a return authorization number for authorized service center repair. • Request an on-site repair technician. 	2 and then choose 1
Service contracts	<ul style="list-style-type: none"> • Ask about an existing contract. • Renew a contract. • Inquire about repair billing or other service invoicing questions. 	1 or 2 and then choose 3

Outside the U.S.A. and Canada, contact your local Intermec representative. To search for your local representative, from the Intermec web site, click **Contact**.

Key Mappings

More information about configuring TE 2000 terminal emulation and about keypad remapping on your Intermec Computer is in the following publications. These are available as PDF on the Intermec web site at: www.intermec.com. These are also available as printed copies.

Manual	Part #
<i>700 Series Color Mobile Computer Quick Start Guide</i>	962-054-053
<i>700 Series Color Mobile Computer User's Manual</i>	961-054-031
<i>CK30 Handheld Computer User's Manual</i>	073528
<i>CK31 Handheld Computer User's Manual</i>	075205
<i>CV60 Vehicle Mount Computer User's Guide</i>	961-054-033
<i>TE 2000 Terminal Emulation Programmer's Guide</i>	977-055-008

The Intermec web site contains Intermec documents (in PDF) that you can download for free. To order printed versions of the Intermec manuals, contact your local Intermec representative or distributor.

Browse to www.intermec.com, click **Service & Support > Manuals**, then in the **Select a Product** field, choose the product whose documentation you want to download.

Quick Start

This section provides you with instructions on how you can install the TE 2000 application quickly.

Installing TE 2000

Installing or upgrading TE 2000 happens in two stages. First use the Installation CD to set up a PC to distribute the TE 2000 application. Then use the PC to send the TE 2000 application to your Intermec computers.

Installation CD

You need the Intermec TE 2000 installation CD (P/N: 235-104-001) and a license key to install the full version of TE 2000. Without a license key, you can only install the demo version.

Insert the installation CD into a Windows PC that you are using to install the TE 2000 application onto your Intermec computers. The setup application should start automatically — if not, then browse to the CD and open SETUP_TE2000.EXE manually. Below are the available TE 2000 installation CDs:

- 235-104-001 (new license)
- 235-167-001 (upgrade)
- 235-168-001 (update)

From the first screen, you can view release notes and FAQ. From the second screen, select either **Licensed Installation** if you have a license key or **Evaluation Installation** to install the demo version. The licensed version prompts for information about your order, your 30-character license key, and your acceptance of your Intermec license agreement.

From the Terminal Emulation Packages screen, clear (uncheck) the packages you are not installing, then click **Install** to put files into the default “\Program Files\Intermec\TE2000” folder on your PC. When the installation is complete, you may remove the CD from your PC.

Preparation

On 700 Color, CK31, and CV60 computers, before you install TE 2000, use the Intermec Settings applet to configure networking. If your computer is already connected to the network, go to “Distributing TE 2000 to Your Computer” on page x.

Using Intermec Settings to Configure Networking (700 Color, CK31, CV60)



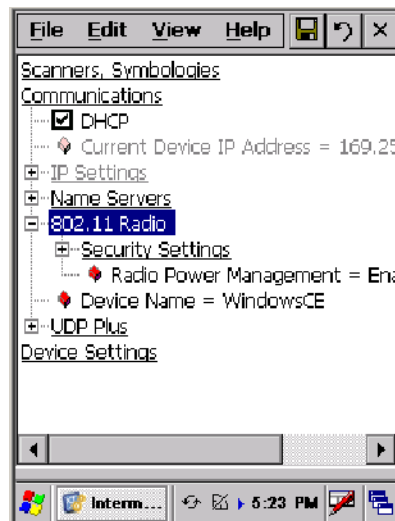
On your computer, access the Intermec Settings applet using the following applicable instructions:

- **700 Color**
Tap **Start** > **Settings** > the **System** tab > the **Intermec Settings** icon.
- **CK31**
Tap **Start** > **Intermec Settings**.
- **CV60**
Tap **Start** > **Settings** > **Control Panel** > the **Intermec Settings** icon.

Tap (+) to expand the **Communications** branch, tap (+) to expand the **802.11 Radio** branch, then set its options to match your network.

If using a controller such as the Intermec G4000, tap (+) to expand the **UDP Plus** branch, then provide the IP address of the controller.

When finished setting parameters, select **File** > **Save Settings** to activate the changes. Tap the **X** in the upper right corner or select **File** > **Exit** to close the applet.



This is a sample screen from a 700 Color Computer.

Distributing TE 2000 to Your Computer

Depending on your computer, there are several ways to load TE 2000:

- Wavelink Avalanche (*page xi*)
- Microsoft ActiveSync (*page xi*)
- Removable Storage Card (not available on CV60) (*page xi*)
- FTP Transfer (CV60 requires 3rd party FTP server) (*page xii*)
- SmartSystems (*page xii*)

Wavelink Avalanche

If you have an Avalanche Agent and Console on your network, you can use Avalanche to send TE 2000 to your computers. After the CD installation, the Avalanche install packages for TE 2000 is in the “\Program Files\Intermec\TE2000*computer*” folder.

Use the Avalanche console to install the appropriate TE 2000 package for your computers. When you enable the package, computers that connect to the Agent will see the update is available and automatically download and install TE 2000. By default, computers search for an Agent once a day and after a warm-boot is performed. The Avalanche console can also send the package on demand.



Note: All Intermec computers come preinstalled with the Avalanche Enabler, but the 700 Color Computers require running the Enabler before connecting the first time. Each reset afterwards launches the Enabler.

Microsoft ActiveSync

Establish a connection to your computer, then open the appropriate folder matching your computer:

700 Color Secure Digital cards <i>(create the folder if it does not exist)</i>	“\Mobile Device\SDMMC Disk\Cabfiles”
700 Color Computers	“\Mobile Device\Flash File Store\Cabfiles”
CK30, CK31 Computers	“\Mobile Device\CK_FFS\Factory_Defaults”
CV60 Computers	“\Mobile Device”

From the “\Program Files\Intermec\TE2000*computer*” folder, copy the appropriately named TE 2000 CAB file, then paste it to the open folder listed in the previous table.

For 700 Color Computers with a Secure Digital card, create this folder: “\Mobile Device\SDMMC Disk\2577” then copy the AUTORUN.DAT, AUTOR.EXE, and AUTOCAB.EXE files to this folder.

After the transfer is complete, launch the CAB on the computer to install TE 2000. 700 Color and CK30 computers run the TE 2000 install when either a warm-boot or a cold-boot is performed. CV60 Computers require launching the CAB manually.



Note: Set the read-only attribute before manually launching the cab file to prevent it from being deleted on execution.

Removable Storage (700 Color, CK30, CK31)

Copy the appropriately named TE 2000 CAB file from the “\Program Files\Intermec\TE2000*computer*” folder on your PC, then paste it onto a blank Secure Digital card that is 16MB or greater. Insert the Secure Digital card into the computer, then launch the CAB file to install TE 2000.

FTP Transfer (700 Color, CK30)

700 Color and CK30 computers have built-in FTP servers.

The Installation CD provides functional shortcuts to install TE 2000 to 700 Color Computers. You can find these shortcuts on your PC via the following: **Start > Program Files > Intermec > TE2000 > 700**

CV60 Computers do not have an FTP server. If you have an FTP server, you may serve the files to the CV60 Computer. Use the Internet Explorer application as an FTP client to retrieve the files.

SmartSystems

With SmartSystems installed on your desktop, use the drag-and-drop method to install your TE 2000 files onto your computer.

Minimum Settings Necessary for Usability

Follow these steps to configure TE 2000 to connect to a host or controller:

- 1 Access the TE 2000 Main Menu pressing the applicable key sequence:

Computer	Key Sequence
700 Color	Tap twice on the upper-right corner of the display; or via the Software Input Panel (SIP) keypad, tap Shift Mn .
CK30	[Alt] [M] (52-key keypad); <input type="checkbox"/> [Ctl] [M] (50-key keypad); [Alt] <input type="checkbox"/> [F3] (42-key keypad)
CK31, CV60	Tap twice on the upper-right corner of the display; via the external keypad, press [Alt] [M].

- 2 Press [1], [Enter], then type "cr52401" at the prompt.

Main Menu
1) Set-up Parm
2) LCD Parm
3)
4) Tests
5) Version Info
6) Exit Menu
7) More

- 3 Press [1] to enter the Communications menu.

Set-up Parm
1) Communication
2) Barcode Parm
3) Protocol Opt
4) Display Opt
5)
6) Exit TE2000
7) More

- For direct connections, go to step 4 on page xiii
- For controller connections, go to step 5 on page xiv (*see note*)



Note: If you are attempting to connect through a controller and you see the 3) **Direct** option, then you need to exit TE 2000, access the Inter-mec Settings control panel applet, and enable UDP Plus before continuing your TE 2000 setup.

- 4 For direct connections, press 3) **Direct** > 2) **Host Setup** > 1) **Host A** and enter the IP address or DNS name (up to 64 characters) of your host. *Note that an auto-enter occurs when the 64th character is entered.*

```

Controller Type
1)
2)
3) Direct Connect
    
```

[3]

```

Direct Connect
1)
2) Host Setup
    
```

[2]

```

Host
1) Host A
2) Host B
3) Host C
    
```

ENTER

```

Host Name (x)
Host emulation
Unit # xxx
Host Name
Enter up to 64 char-
acter/numbers for a
name
    
```

- For controller connections, select 1) ITC Server > 2) Host/Srvr > 1) Server A and enter the IP address or DNS name (up to 64 characters) of your controller. *An autoenter occurs after the 64th character is entered.*

```
-----  
Controller Type  
1) ITC Server  
2)  
3)
```

[1]

```
-----  
ITC Server  
1)  
2) Host/Srvr
```

[2]

```
-----  
Server Setup  
1) Server A  
2) Server B  
3) Server C
```

- Select an emulation from the next screen, then press [Enter] repeatedly until you return to the Main Menu.

```
-----  
Emulation<A, B, or C>  
1) Native  
2) 3270  
3) 5250  
4) VT/ANSI
```

- Select 6) Exit Menus from the Main Menu, press [Y] at the Save Parm message, then enter "cr52401" at the Enter Password prompt.

```
-----  
Exit TE2000  
  
Enter "Y"  
To Exit TE2000:
```

Exiting TE 2000

Tap **Exit** on the lower left corner of the display, then enter "cr52401" at the Input Password prompt. Tap **Yes** to close TE 2000.

You may also exit TE 2000 through the Set-up Menu. Press [Alt] [M] to access the Set-up Menu or use another method as described earlier. Press [1], then "cr52401" at the enter password prompt to access the Set-up Parm menu. Press 6) Exit TE2000, then press [Y] to close TE 2000.

About Using the TE 2000 Application on Intermec Computers

These instructions explain how to install and start the TE 2000 terminal emulation software on your Intermec Computer. For help with installing a storage media card, or a battery pack, or to learn about booting the Intermec Computer, see the applicable manuals listed below:

Manual	Part #
<i>700 Series Color Mobile Computer Quick Start Guide</i>	962-054-053
<i>CK30 Handheld Computer Quick Start Guide</i>	073389
<i>CK31 Handheld Computer Quick Start Guide</i>	075205
<i>CV60 Vehicle Mount Computer Quick Start Guide</i>	962-054-072

Installing onto Your Desktop or Laptop

The TE 2000 CAB files gets installed from the TE 2000 installation CD. The CAB files need to be installed onto your desktop or laptop into the “C:\Program Files\Intermec\TE2000*computer*” folder for configuration purposes before you can send them to your handheld, mobile, or vehicle mount computers. Below are the available TE 2000 installation CDs:

- 235-104-001 (new license)
- 235-167-001 (upgrade)
- 235-168-001 (update)

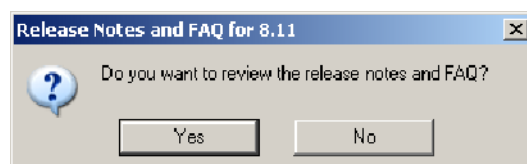
Insert the appropriate CD into your desktop or laptop, wait for the TE 2000 installation application to start up on your screen, then follow the screen prompts. The applicable CAB, AVA, and other associated files for your computers are then extracted to the default “C:\Program Files\Intermec\TE2000” location on your desktop or laptop.

Starting the Installation

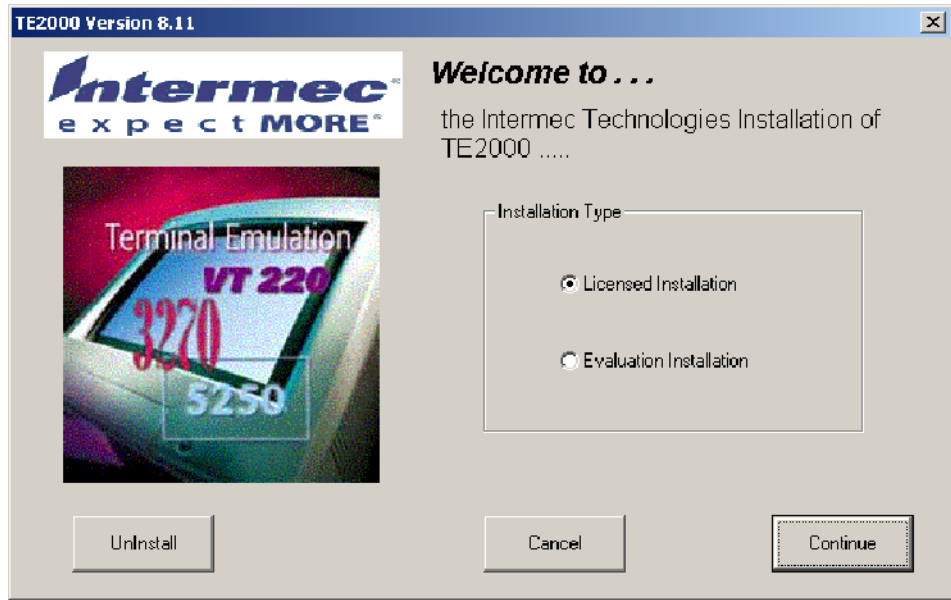
You need the Intermec TE 2000 installation CD and a license key to install the full version. Without a license key, you can only install the evaluation version of TE 2000.

Insert the installation CD into a Windows desktop that you are using to install the TE 2000 application onto your Intermec computers. The setup application should start automatically — if not, then browse to the CD and open SETUP_TE2000.EXE manually.

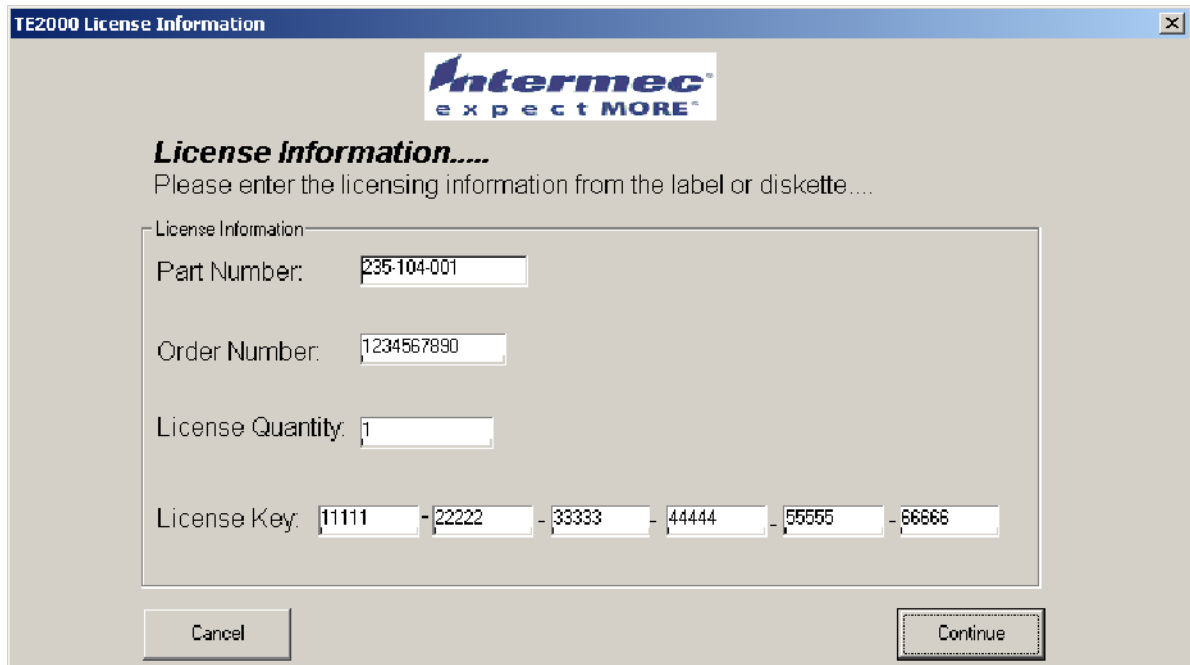
- 1 Click **Yes** if you want to view the release notes and FAQ for this installation. Scroll through the information, then close the file to return to the installation. Click **No** to go straight to the installation screen.



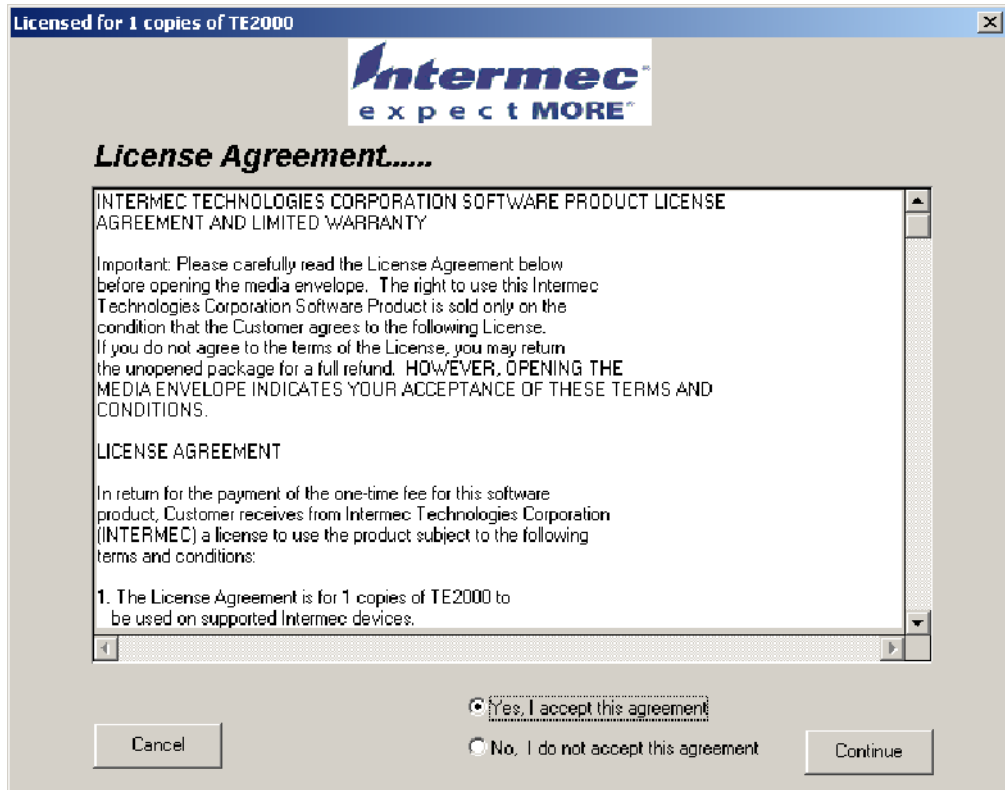
- 2 Select either **Licensed Installation** if you have a license key or **Evaluation Installation** to install the demo version, then click **Continue**. If you selected “Evaluation,” go to step 5.



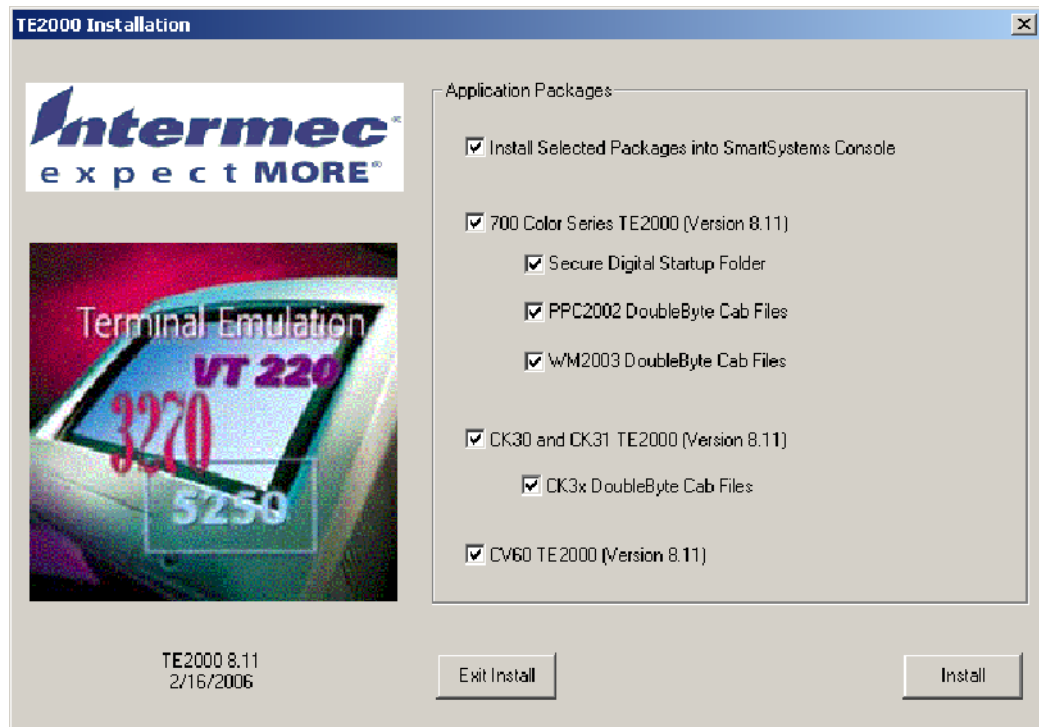
- 3 For the licensed version, enter information about your order, and your 30-character license key, then click **Continue**.



4 Select Yes, I accept this agreement, then click Continue.



5 Clear (uncheck) the packages you are not installing, then click Install to put files into the default "\Program Files\Intermecc\TE2000" folder.





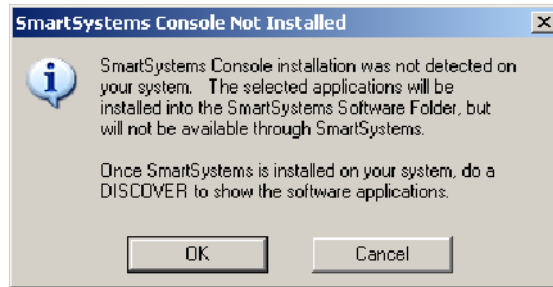
Note: The Evaluation Installation does not permit installing these packages into the SmartSystems™ Console.

6 Go through the next few page for details.

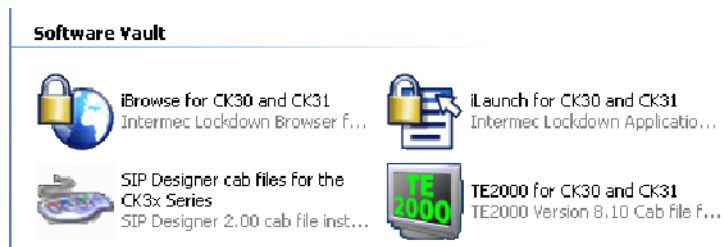
Installing into the SmartSystems Console

Go to *SmartSystems Online Help* for information about this application.

If SmartSystems is *not* installed on your desktop, the following information appears. Click **OK** to continue.



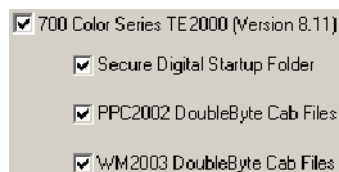
If SmartSystems is installed on your desktop, the applicable software icons appear or refresh beneath the **Software Vault** header in the “\DiscoveredDevices” folder after the installation is complete.



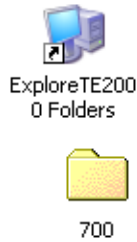
Installing the 700 Color Series Package

Before you select to download this package, make sure your 700 Color Computer has at least the Windows Mobile 2003 version 3.40 with PSM (Persistent Storage Memory) version 3.15 and an IVA (Intermec Value-Add) build of version 3.00.00.0837.

If not, either contact your Intermec representative or go to the *700 Series Mobile Computer User's Manual* for information about these computers.



- Check **700 Color Series TE2000 (Version 8.11)** to download files for all three options.
- Check **Secure Digital Startup Folder** to download files that go onto a Secure Digital storage card.



- Check **PPC2002 DoubleByte Cab Files** to download files that go onto a 700 Color Computer with the Pocket PC 2002 operating system.
- Check **WM2003 DoubleByte Cab Files** to download files that go on 700 Color Computers with Windows Mobile 2003.

When the contents of the default “C:\Program Files\Intermec\TE2000” folder appears, double-click the **Explore TE2000 Folders** shortcut to access files downloaded for the 700 Color Computers.

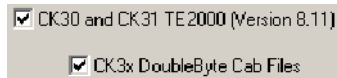
*If you selected **Secure Digital Startup Folder**, copy the contents from the **700** folder onto a Secure Digital card, insert the card into a 700 Color Computer, then perform a cold-boot on the computer for the computer to install the contents of the storage card.*

*If you selected any of the other three options, using ActiveSync, copy the contents from the **700** folder on your desktop into the appropriate location on a 700 Color Computer, then from the 700 Color Computer, activate the CAB files.*

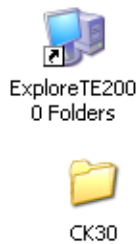
Installing the CK30 and CK31 Package

Before you download this package, make sure your CK30 or CK31 Computer has at least the SP3 or an operating system of version 2.00.00.0533.

*Go to the **CK30 Handheld Computer User’s Manual** or the **CK31 Handheld Computer User’s Manual** for information about these computers.*



- Check **CK30 and CK31 TE2000 (Version 8.11)** to download files for both CK30 and CK31 Computers.
- Check **CK3x DoubleByte Cab Files** to download files for the CK30.



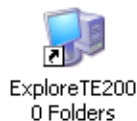
When the contents of the default “C:\Program Files\Intermec\TE2000” folder appears, double-click the **Explore TE2000 Folders** shortcut to access files downloaded for the CK30 or CK31 Computers.

Using ActiveSync, copy the contents from the **CK30** folder on your desktop into the appropriate location on a CK30 or CK31 Computer, then from the CK30 or CK31 Computer, activate the CAB files.

Installing the CV60 Package

Before you select to download this package, make sure your CV60 Computer has at least the Windows CE operating system version 4.20 (the Intermec Load version 1.15).

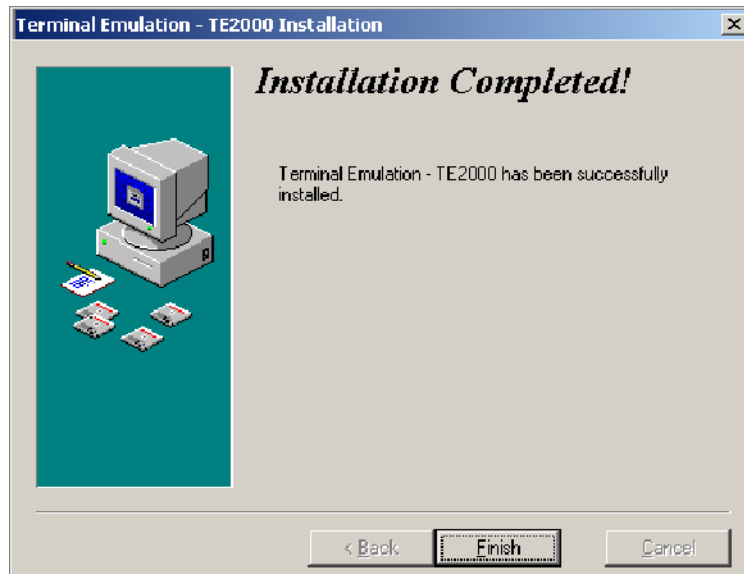
Go to the *CV60 Vehicle Mount Computer User’s Guide* for information about this computer. Check **CV60 TE2000 (Version 8.11)** to download files for the CV60 Computer.



When the contents of the default “C:\Program Files\Intermec\TE2000” folder appears, double-click the **Explore TE2000 Folders** shortcut to access files downloaded for the CV60 Computer.

Completing the Installation

When the installations are complete, click **Finish** to complete the installation. When done, remove the installation CD from your desktop.



Installing TE 2000 Onto Your Computer

The following instructions pertain to installing applications onto your computer. Go to the applicable page for your particular computer:

- 700 Color - below
- CK30 or CK31 - page 8
- CV60 - page 10

700 Color Mobile Computers

These instructions pertain to installing the TE 2000 application onto the Intermecc 700 Color Mobile Computer. Consider any of the following options to load your TE 2000 application onto your 700 Color Computer.

- Microsoft ActiveSync (*next paragraph*)
- FTP Server (*page 7*)
- Secure Digital storage card (*page 7*)
- Wavelink Avalanche (*page 8*)
- SmartSystems (*page 8*) *recommended by Intermecc*

Using Microsoft ActiveSync

The following information may pertain to your computer. For information on using Microsoft ActiveSync, go to page 29 for instructions.

To download the latest version of Microsoft ActiveSync, go to www.microsoft.com

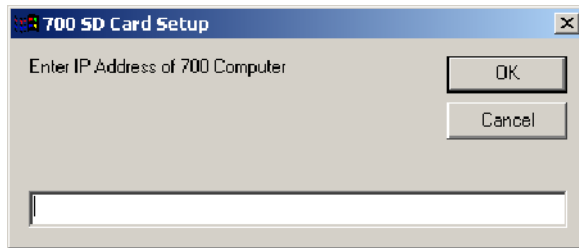
Using the FTP Server

The 700 Color Computer has a built-in FTP Server that connects to a network via Ethernet or 802.11b. This allows connections to the 700 Color Computer to perform file transfers or computer management functions. Another benefit is that you can create FTP scripts to automate the process of copying files to the 700 Color Computer. This option is good for when a large number of 700 Color Computers need updating. See the *700 Series Color Mobile Computer User's Manual* for information.

There is a sample TE2000_FTP_SDCARD.BAT FTP script file (for the Secure Digital storage card) installed in the "C:\Program Files\Intermec\TE2000" location on your desktop, which was installed from your TE 2000 Installation CD.

You can also use the VisualBasic script files to send the TE 2000 CAB files to your 700 Color Computer. From your desktop, select **Start > Programs > Intermec > TE2000 > ftp > TE2000_FTP_SDCard**.

Enter the IP address of the 700 Color Computer to receive files, then click **OK** to initiate the file transfer. An MS-DOS dialog box appears to list the progress of the file transfer. When complete, the MS-DOS dialog box closes automatically and the 700 Color Computer performs a warm-boot.



Using a Secure Digital Card

Follow the steps below to install the TE 2000 application on the computer using a Secure Digital storage card:

- 1 Suspend the 700 Color Computer and remove its Secure Digital drive, which holds a storage card.
- 2 Using a Secure Digital Adapter card, place the Secure Digital Drive in your desktop PC card drive.
- 3 In the "\SDMMC Disk" folder, create a subdirectory called "\2577" on the Secure Digital storage card.
- 4 Copy the AUTORUN.DAT, AUTORUN.EXE, and AUTOCAB.EXE files to this subdirectory. These files are located on your desktop computer in the "C:\Program Files\Intermec\TE2000" folder.
- 5 Remove the Secure Digital drive from your desktop computer, reinstall it into the 700 Color Computer, perform a warm-boot on the 700 Color Computer to automatically extract these files.

Using Wavelink Avalanche

You can use the Wavelink Avalanche™ device management system to install applications on all of your 700 Color Computers. The computers ship with the Avalanche Enabler already installed. The package is provided along with the CAB files in the TE 2000 distribution.

Typically on a warm-boot, (by default) the Avalanche Enabler attempts to connect to the Avalanche Agent and checks for updates daily. When connection to the Agent is successful, the Agent determines whether an update is available and immediately starts the software upgrade, file transfer, or configuration update.

For more information on using Wavelink Avalanche, go to page 19 for instructions, contact your Intermec representative, or visit the Wavelink web site at www.wavelink.com

Using SmartSystems



Using the drag-and-drop method, select the appropriate software files from beneath the **Software Vault** header and drag them up to the 700 Color icon beneath the **Pen Notepad Computers** header.

Go to page 36 for a list showing what you should see for your mobile computer when working in the SmartSystems application. Be sure to read the description next to each icon to ensure it is for your mobile computer.

CK30 and CK31 Handheld Computers

These instructions pertain to installing the TE 2000 application onto the CK30 and CK31 Handheld Computers. To learn more about the CK30 Handheld Computer, see the *CK30 Handheld Computer Quick Start Guide*. To learn more about the CK31 Handheld Computer, see the *CK31 Handheld Computer Quick Start Guide*.

There are two ways to install the TE 2000 application on the CK30 or CK31, if it is not already installed from the factory: from the CAB file distribution, or with an Avalanche package.

During installation, the TE 2000 application and configuration files are written to the “\SDMMC Disk” folder where they can persist through a cold-boot. You must save system settings manually.

The “\SDMMC Disk” folder is an area of storage that is part of the CK30 or CK31 flash memory. This area is not deleted during a cold-boot.

There are several ways you can install files and applications on the CK30 or CK31. The following sections explain how to use each one of these processes to install your application on the CK30 or CK31.

- FTP Server
- Microsoft ActiveSync
- Secure Digital Card (*page 9*)
- Wavelink Avalanche (*page 9*)
- SmartSystems (*page 10*) recommended by Intermec

Using an FTP Server

The CK30 or CK31 has a built-in FTP Server that connects to a network through the 802.11b/g radio. You can use the server to transfer your application file to the CK30 or CK31. Another benefit of using the FTP Server is that you can create FTP scripts to automate the process of copying your files to the CK30 or CK31. This option is useful when you need to send files to a large number of CK30s or CK31s. Any user name and password is accepted.


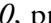
Using Microsoft ActiveSync

You can use Microsoft ActiveSync to establish a connection between your desktop and the CK30 or CK31. This connection allows you to transfer files, synchronize files, perform remote debugging, and other device management activities. This is a free application available from the Microsoft web site.

For information on using Microsoft ActiveSync, go to page 29 for instructions.

Using a Secure Digital Card

CK30s and CK31s do not come with Secure Digital cards. Contact an Intermec representative for information about ordering. To install the TE 2000 application with a Secure Digital card:

- 1 Copy the install CAB file to a Secure Digital card and insert the card into the CK30 or CK31. For help, see either the *CK30 Handheld Computer User's Manual* or the *CK31 Handheld Computer User's Manual*.
- 2 *On your CK30*, press ,  to access the System Main Menu, select **File Manager** to navigate to the “\SDMMC Disk” folder, then select the TE_CK30.CAB file to launch the TE 2000 installation.

On your CK31, select **Start > Programs > Windows Explorer**, navigate to the “\SDMMC Disk” folder, then tap the TE_CK31.CAB file to launch the TE 2000 installation.

Using Wavelink Avalanche

You can use the Wavelink Avalanche device management system to install applications on all of your wireless CK30s or CK31s. The CK30 and CK31 ship with the Avalanche Enabler already installed. The package is provided along with the CAB files in the TE 2000 distribution.

Each time the Avalanche Enabler is activated (typically on a warm-boot), the CK30 or CK31 attempts to connect to the Avalanche Agent. When the CK30 or CK31 connects to the Agent, the Agent determines whether an update is available and immediately starts the software upgrade, file transfer, or configuration update.

Install software packages and updates for the CK30 or CK31 using the Avalanche Administrative Console, then schedule the CK30 or CK31 updates or manually initiate an update using the same console.

For information on using Wavelink Avalanche, contact your local Intermec representative, visit the Wavelink web site at www.wavelink.com, or go to page 19 for instructions.



Using SmartSystems

Using the drag-and-drop method, select the appropriate software files from beneath the **Software Vault** header and drag them up to the CK30 or CK31 icon beneath the **Pen Notepad Computers** header.

Go to page 36 for a list showing what you should see for your handheld computer when working in the SmartSystems application. Be sure to read the description next to each icon to ensure it is for your CK30 or CK31.

CV60 Vehicle Mount Computers

These instructions pertain installing the TE 2000 application on the CV60 Vehicle Mount Computer. To learn more about the CV60 Vehicle Mount Computer, see the *CV60 Vehicle Mount Computer Quick Start Guide*.

The TE 2000 application may install onto your CV60 Computer using any of the following. The steps apply to all methods of installation:

- Wavelink Avalanche
- Microsoft ActiveSync
- Third Party FTP Server Software
- SmartSystems (page 11) recommended by Intermec

1 Insert the TE 2000 CD into your desktop or laptop PC and wait for the automatic TE 2000 setup.

If the CD does not run the TE 2000 setup automatically, use your desktop Explorer application to access the CD drive, then double-click the SETUP_TE2000.EXE file.

2 Follow the onscreen prompts to install the TE 2000 application for your CV60 Computers.

Using Wavelink Avalanche

For information on using Wavelink Avalanche, contact your local Intermec representative, visit the Wavelink web site at www.wavelink.com, or go to page 19 for instructions.

Using Microsoft ActiveSync

These instructions assume that the “\Utilities” portion of the *CV60 Software Tools CD* was installed onto your desktop. The Microsoft ActiveSync application is located on the CV60 Software Tools CD. See the *CV60 Vehicle Mount Computer User’s Manual* for information about this application as provided by Microsoft Corporation. The TE 2000 application installs from the installation CD toolkit.

Go to page 29 for instructions on using Microsoft ActiveSync.

Using an FTP Server



Note: File Transfer Protocol for Windows CE .NET supports file transfer *from* the CV60 Computer *to* another computer, such as a laptop.

The CV60 Computer requires a third party FTP Server that connects to a network via Ethernet or 802.11b. This allows connections to the CV60 Computer to do file transfers or computer management functions.

Enter the IP address of the CV60 Computer to receive files, then click **OK** to initiate the file transfer. An MS-DOS dialog box appears to list the progress of the file transfer. When complete, the MS-DOS dialog box closes automatically and the CV60 Computer performs a warm boot.

If you experience problems using the FTP Folders, use the standard FTP.EXE client to confirm connectivity. To install the TE 2000 application using an FTP Server, you need the following:

- A desktop or laptop PC with Ethernet
- An FTP Server from a third-party vendor if using Windows
- A 10/100T network crossover cable or an 802.11 Access Point with a network cable

To install the TE 2000 application using an FTP Server, do the following:

- 1 Configure the CV60 Computer network settings to connect to your desktop.
- 2 Configure the FTP Server to share the TE_CV60.CAB file with a user name and password.
- 3 Launch Internet Explorer, then type the following in the address bar:
`FTP://username:password@ipaddress`
- 4 Download the TE_CV60.CAB file into the root folder or directory of the CV60 Computer, then close the CV60 browser.
- 5 *From the CV60 Computer:* double-click the **My Computer** icon, double-click the TE_CV60.CAB file to install the TE 2000 application.



Using SmartSystems

Using the drag-and-drop method, select the appropriate software files from beneath the **Software Vault** header and drag them up to the CV60 icon beneath the **Pen Notepad Computers** header.

Go to page 36 for a list showing what you should see for your vehicle mount computer when working in the SmartSystems application. Be sure to read the description next to each icon to ensure it is for your CV60.

Configuring TE 2000 on Your Computer

The following instructions pertain to configuring TE 2000 on your computer. Go to the applicable page for your particular computer:


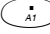


- 700 Color - below
- CK30 or CK31 - page 13
- CV60 - page 15

700 Color Mobile Computer

You can use the 700 Color Computer's TE 2000 configuration menus to configure site-specific operational parameters, such as host communications and terminal emulation options.

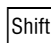
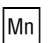
Starting the TE 2000 Application

To launch the TE 2000 application on the 700 Color Computer:

- If iLaunch is installed:
 - Tap **Intermec TE2000** from the iLaunch application.
 - On numeric keypads, press Gold , then .
 - On alphanumeric keypads, press , then .
- If iLaunch is not installed:
 - Tap **Start > Programs > the TE2000 desktop icon.**
 - Tap **Start > TE2000**
 - Tap **Start**, then the terminal icon in the system tray if the TE 2000 application was previously running.

Minimum Settings Necessary for Usability

Follow these steps to configure TE 2000 to connect to a host or controller:

- 1 Tap twice on the upper-right corner of the display, or via the Software Input Panel (SIP) keypad, tap   to access the TE 2000 Main Menu.
- 2 Press [1], [Enter], then type “cr52401” at the prompt.

```
-----  
Main Menu  
-----  
1) Set-up Parm  
2) LCD Parm  
3)  
4) Tests  
5) Version Info  
6) Exit Menus  
7) More
```

- 3 Press [1] to enter the Communications menu.

```
-----  
Set-up Parm  
-----  
1) Communication  
2) Barcode Parm  
3) Protocol Opt  
4) Display Opt  
5)  
6) Exit TE2000  
7) More
```

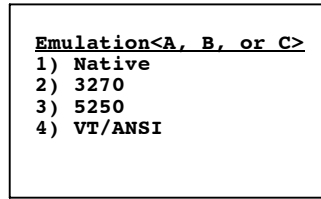
- For direct connections, go to step 4.
- For controller connections, go to step 5 (*see note*).



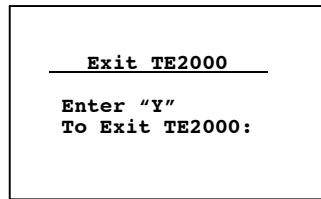
Note: If you are attempting to connect through a controller and you see the 3) **Direct** option, then you need to exit TE 2000, access the Intermec Settings control panel applet, and enable UDP Plus before continuing your TE 2000 setup.

- 4 For direct connections, press 3) **Direct > 2) Host Setup > 1) Host A** and enter the IP address or DNS name (up to 64 characters) of your host. *Note that an auto-enter occurs when the 64th character is entered.*
- 5 For controller connections, select 1) **ITC Server > 2) Host/Srvr > 1) Server A** and enter the IP address or DNS name (up to 64 characters) of your controller. *An autoenter occurs after the 64th character is entered.*

- 6 Select an emulation from the next screen, then press [Enter] repeatedly until you return to the Main Menu.



- 7 Select 6) Exit Menus from the Main Menu, press [Y] at the Save Parm message, then enter “cr52401” at the Enter Password prompt.



Exiting TE 2000

Tap Exit on the lower left corner of the display, then enter “cr52401” at the Input Password prompt. Tap Yes to close TE 2000.

You may also exit TE 2000 through the Set-up Menu. Press [Alt] [M] to access the Set-up Menu or use another method as described earlier. Press [1], then “cr52401” at the enter password prompt to access the Set-up Parm menu. Press 6) Exit TE2000, then press [Y] to close TE 2000.

CK30 and CK31 Handheld Computers

You can use the TE 2000 configuration menus to configure site-specific operational parameters, such as TCP/IP communications, terminal emulation options, and the TE 2000 configuration password.

Configuring the TE 2000 Data Stream

The default data stream is “VT/ANSI,” which appears as “VT340” in the main initialization screen. This indicates that you are configured to use the TE 2000 application in VT/ANSI mode.



Do the following to choose another emulation mode:

- 1 Access the Main Menu, press [1], then “cr52401” at the Enter Password prompt to access the Set-up Parm menu.

- 2 From the Set-up Parms menu, select 3) **Protocol Opts** > 2) **Data Stream**, then any of the following:
 - 1) **Native** to choose Native Terminal Emulation.
 - 2) **3270** to choose TE 2000 3270 Terminal Emulation.
 - 3) **5250** to choose TE 2000 5250 Terminal Emulation.
- 3 Continue pressing [**Enter**] until you return to the Main Menu.
- 4 From the Main Menu, select 6) **Exit Menu**s.
- 5 Press [**Y**] at the Save Parms message to save this change.
- 6 Enter “cr52401” at the Enter Password prompt to return to the TE 2000 main screen. Your new TE 2000 choice is shown to indicate you are ready to use the TE 2000 application in the new emulation mode.

Entering Server IP Address

To set up the TE 2000 application to enter the server IP address:

If the CK30 is configured to run over UDP Plus

- 1 Access the Main Menu, press [**1**], then “cr52401” at the Enter Password prompt to access the Set-up Parms menu.
- 2 From the Set-up Parms menu, select 1) **Communication** > 1) **ITC Server** > 2) **Host/Srvr** > 1) **Server A**, enter the server IP address, using up to 64 characters or numbers, then press [**Enter**]. Enter spaces or punctuation where needed. *Note that the TE 2000 application performs an auto-enter when the 64th character is entered.*
- 3 If you want to use a port other than 23, select 3) **Port Number** to enter that port in the Port Number screen, then press [**Enter**].
- 4 Continue pressing [**Enter**] until you return to the Main Menu.
- 5 From the Main Menu, select 6) **Exit Menu**s.
- 6 Press [**Y**] at the Save Parms message, then enter “cr52401” at the Enter Password prompt to return to the TE 2000 main screen.

If the CK30 is configured to run over TCP/IP

- 1 Access the Main Menu, press [**1**], then “cr52401” at the Enter Password prompt to access the Set-up Parms menu.
- 2 From the Set-up Parms menu, select 1) **Communication** > 3) **Direct Connect** > 2) **Host Setup** > 1) **Host A**,, enter the host name using up to 64 characters or numbers, then press [**Enter**]. Enter spaces or punctuation where needed. *Note that the TE 2000 application performs an auto-enter when the 64th character is entered.*
- 3 If you want to use a port other than 23, then enter that port in the Port Number screen, then press [**Enter**].
- 4 Continue pressing [**Enter**] until you return to the Main Menu.
- 5 From the Main Menu, select 6) **Exit Menu**s.
- 6 Press [**Y**] at the Save Parms message, then enter “cr52401” at the Enter Password prompt to return to the TE 2000 main screen.

Exiting the TE 2000 Application

To exit the TE 2000 application, you may either press [Alt], then [Tab] to end the TE 2000 application with the Task Manager; or you can press the following key sequences to enter the TE 2000 Main Menu:

- 52-key keypad: [Alt], then [M]
- 50-key keypad: \square , [Ctl], then [M]
- 42-key keypad: [Alt], \blacksquare , then [F3]

Once in the Main Menu, press [1], then “cr52401” at the Enter Password prompt. Select 6) Exit Menus, then press [Y] at the “Enter ‘Y’ to Exit TE2000” message.

Restarting the TE 2000 Application

If the TE 2000 application is running and you want to restart the application, press and hold the $\frac{1}{2}$ key until the CK30 or CK31 performs a warm-boot. The TE 2000 application automatically restarts at boot time.

If you have manually stopped the TE 2000 application, press \square , \blacksquare , then select TE2000 from the menu.

CV60 Vehicle Mount Computers

Below are instructions how to configure, exit, and restart the TE 2000 applications on your CV60 Computer. You can use the CV60 Computer’s TE configuration menus to configure site-specific operational parameters, such as TCP/IP communications, terminal emulation options, and the Main Menu password.

Starting the TE 2000 Application

You can access the TE 2000 application on the CV60 Computer by:

- selecting TE2000 from the Start menu.
- performing a reboot on the CV60 Computer.

Entering a Host IP Address

You need to set up the TE 2000 application to enter the server IP address of the host computer for communications and you need individual settings for either of these methods. See the *TE 2000 Terminal Emulation Programmer’s Guide* (P/N: 977-055-008) for additional methods.

- TCP Direct Connect
- UDP Plus Controller

Do the following to enter the host IP address:

- 1 At the initialization screen or anywhere in a TE 2000 session, tap twice on the upper-right corner of the display or via the Software Input Panel (onscreen keyboard) tap [Shift], [Mn], then “TE2000 Menus” to access the Main Menu.
- 2 Press [1], then “cr52401” at the Enter Password prompt to access the Set-up Parm menu.

- 3 If using a TCP Direct Connection, select 1) **Communication** > 3) **Direct Connect** > 2) **Host Setup** > 1) **Host A**, enter the host name using up to 64 characters or numbers, then press [Enter].

If using a UDP Plus Controller, select 1) **Communication** > 1) **ITC Server** > 2) **Host/Srvr** > 1) **Server A**, enter the server IP address, using up to 64 characters or numbers, then press [Enter].

Enter spaces or punctuation where needed. *Note that the TE 2000 application performs an auto-enter when the 64th character is entered.*

- 4 If you want to use a port other than 23, select 3) **Port Number** to enter that port in the Port Number screen, then press [Enter].
- 5 Continue pressing [Enter] until you return to the Main Menu.
- 6 From the Main Menu, select 6) **Exit Menus**.
- 7 Enter [Y] at the Save ParmS message, then enter “cr52401” at the **Enter Password** prompt to return to the TE 2000 main screen.

Configuring the TE 2000 Data Stream

The default data stream is VT/ANSI, which appears as “VT340” in the main initialization screen. This indicates that you are ready to use the TE 2000 application in VT/ANSI TE 2000 mode. *Note that this illustration is from the upper-left corner of the CV60 Computer screen.*



Do the following to choose another emulation mode:

- 1 At the initialization screen or anywhere in a TE 2000 session, tap twice on the upper-right corner of the display or via the Software Input Panel (onscreen keyboard) tap [Shift], [Mn], then “TE2000 Menus.”
- 2 Press [1], then “cr52401” at the **Enter Password** prompt to access the Set-up ParmS menu.
- 3 From the Set-up ParmS menu, select 3) **Protocol Opts**, > 2) **Data Stream**, then one of the following:
 - 1) **Native** to choose Native Terminal Emulation.
 - 2) **3270** to choose TE 2000 3270 Terminal Emulation.
 - 3) **5250** to choose TE 2000 5250 Terminal Emulation.
- 4 Continue pressing [Enter] until you return to the Main Menu.
- 5 From the Main Menu, select 6) **Exit Menus**.
- 6 Enter [Y] at the Save ParmS message to save this change.
- 7 Enter “cr52401” at the **Enter Password** prompt to return to the TE 2000 main screen. Your new terminal emulation choice is shown to indicate you are ready to use TE 2000 in the new emulation mode.

Restarting the TE 2000 Application

Do a cold-boot on the CV60 Computer, then do the following:

- 1 Reboot the CV60 Computer to restart the TE 2000 application.
- 2 Tap **Start** > **Programs** > **TE2000** to restart the TE 2000 application.
- 3 Browse to and activate the FWPCV6H0.EXE executable.

Exiting the TE 2000 Application

There are three ways to exit the TE 2000 application:

- Tap **Exit** in the lower-left corner, then enter the “cr52401” password.
- Press [Alt] [Tab] to terminate the TE 2000 application from the Task Manager.
- Go to the TE 2000 Main Menu, press [1], enter “cr52401” for the password, press [6], tap **Yes** at the “Exit TE2000” prompt.

Using Intermec Settings to Configure Computer Options

See the *Intermec Computer Command Reference Manual* (P/N: 073529) for information about the applet.

700 Color Mobile Computer





Tap **Start** > **Settings** > the **System** tab > the **Intermec Settings** icon to access the Intermec Settings applet. Tap (+) to expand the **Communications** branch, tap (+) to expand the **802.11 Radio** branch, then set its options to match your network.

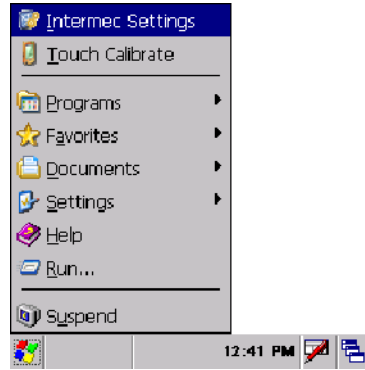
If using a controller such as the Intermec G4000, tap (+) to expand the **UDP Plus** branch, then provide the IP address of the controller. When finished setting parameters, select **File** > **Save Settings** to activate the changes. Tap the **X** in the upper right corner or select **File** > **Exit** to close the applet.



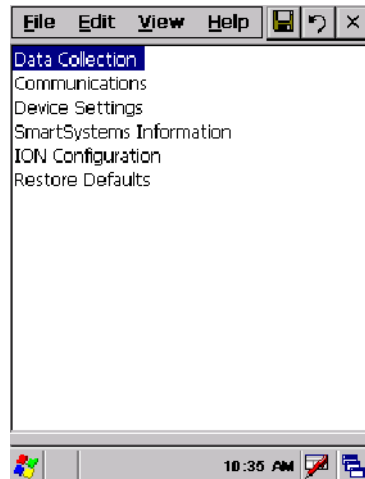
CK31 Handheld Computers

Use Intermec Settings to configure the CK31 and view system information. You can access Intermec Settings while running any application.

- 1 Tap **Start** > **Intermec Settings**, or press  >  > **Intermec Settings**.



- 2 When done modifying your device configuration and have saved your settings, tap **File** > **Exit** or tap the **X** in the upper right corner.



CV60 Vehicle Mount Computer

To ensure all settings are active, configure the TE 2000 application through the Intermec Settings applet before you start TE 2000.

- 1 Exit the TE 2000 application.
- 2 Tap **Start** > **Settings** > **Control Panel**, then double-tap the **Intermec Settings** icon.
- 3 Configure the parameters for your computer to match your system, save the changes, exit the Intermec Settings applet, then restart TE 2000.



Note: Not all parameters support all computers. If you reset a parameter that does not support your computer, the change made to the parameter does not affect your computer.

Using Wavelink Avalanche

The following instructions pertain to all computers in these instructions. To install the TE 2000 application using Wavelink Avalanche, you need the following:

- A desktop or laptop PC with either Ethernet or an available serial port
- Wavelink Avalanche Manager software, which is available from www.wavelink.com
- A client license for each computer to use the Avalanche application. This license is available for purchase either from Intermec or from Wavelink Corporation.
- An 802.11 Access Point with a network or an ActiveSync serial cable

Installing a TE 2000 AVA Package onto Your Desktop

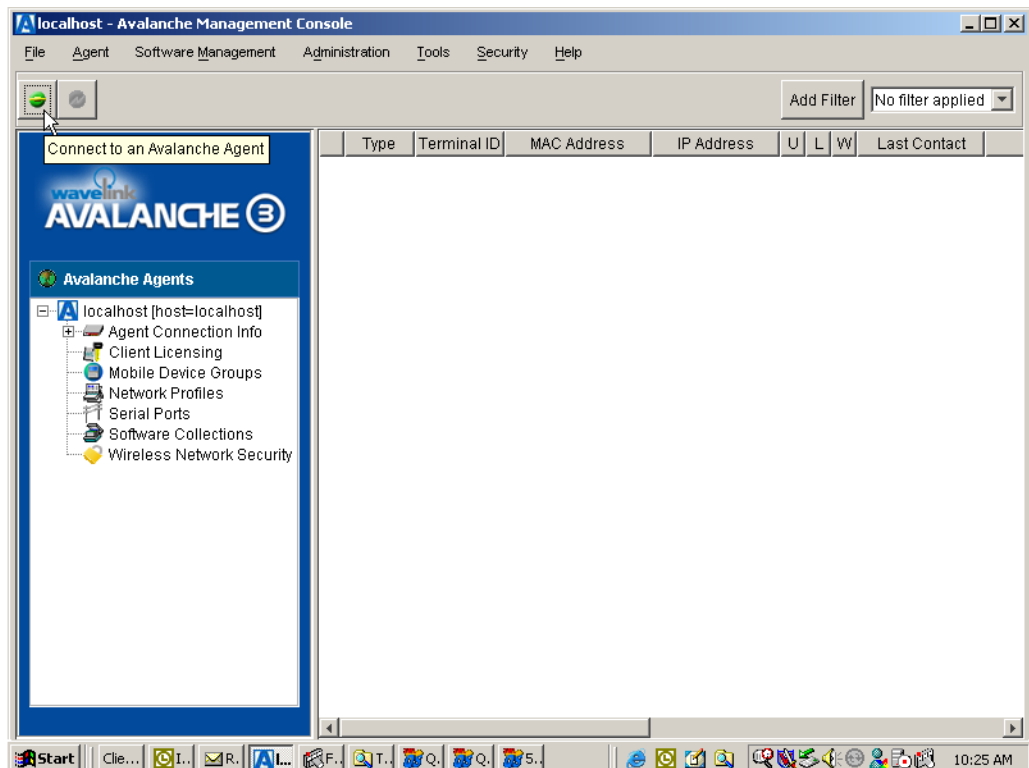
Assuming licenses were purchased when Wavelink Avalanche was installed, do the following to install the TE 2000 application. Note that “XXXX” denotes a computer, such as the CK30.



1 From the desktop, double-click the **Wavelink Avalanche Console** icon to launch the Avalanche Management Console.



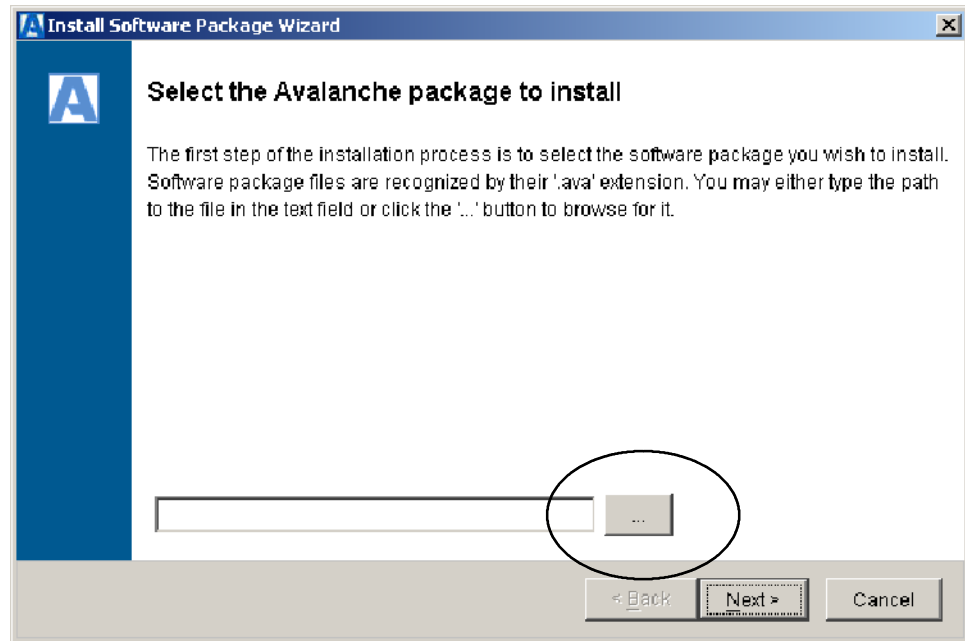
2 Click the green **Connect to an Avalanche Agent** button in the upper left of the manager, click **Next**, click **Next** again, then click **Finish**.



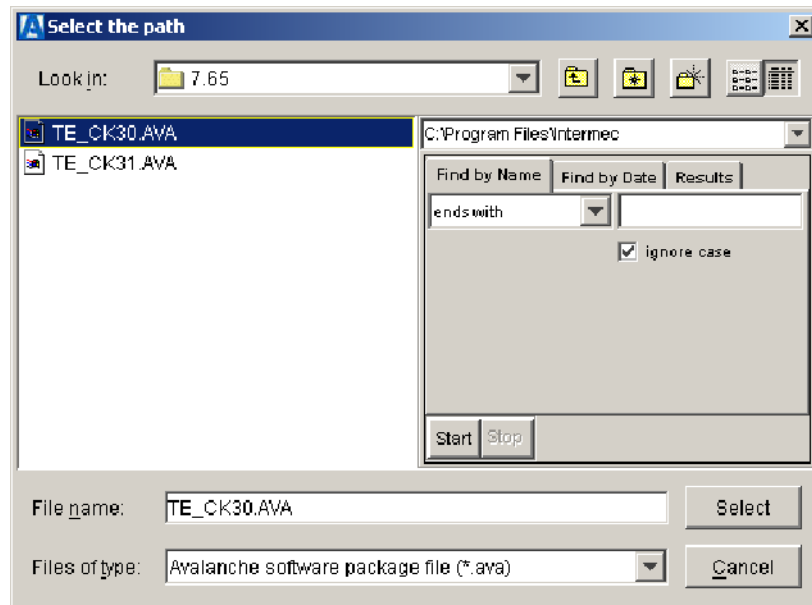
3 From the *Avalanche toolbar*, select **Software Management > Install Software Package**.



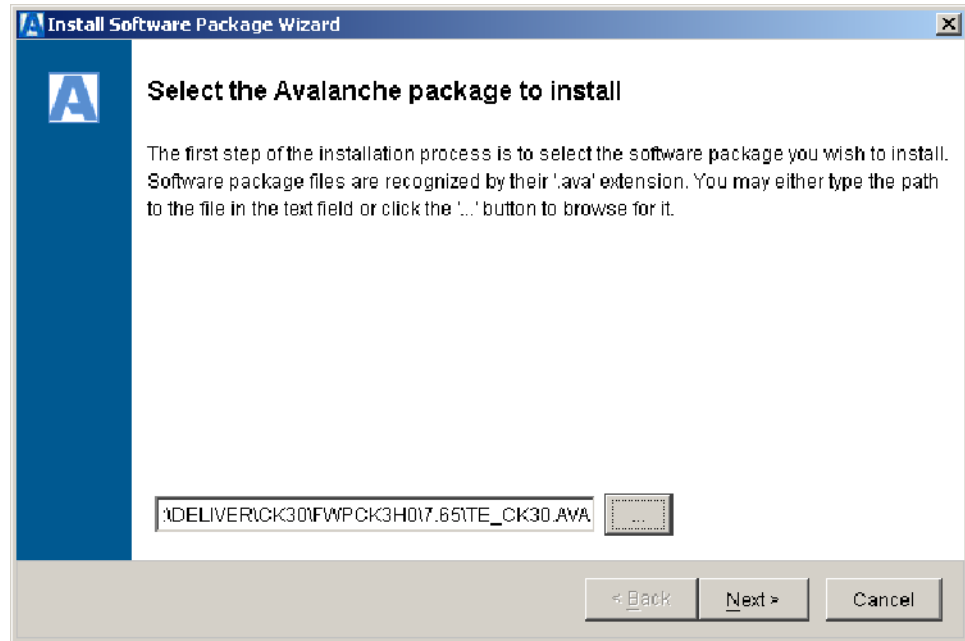
- 4 Click the . . . wizard button to browse for the appropriate .AVA file *circled in the following illustration.*



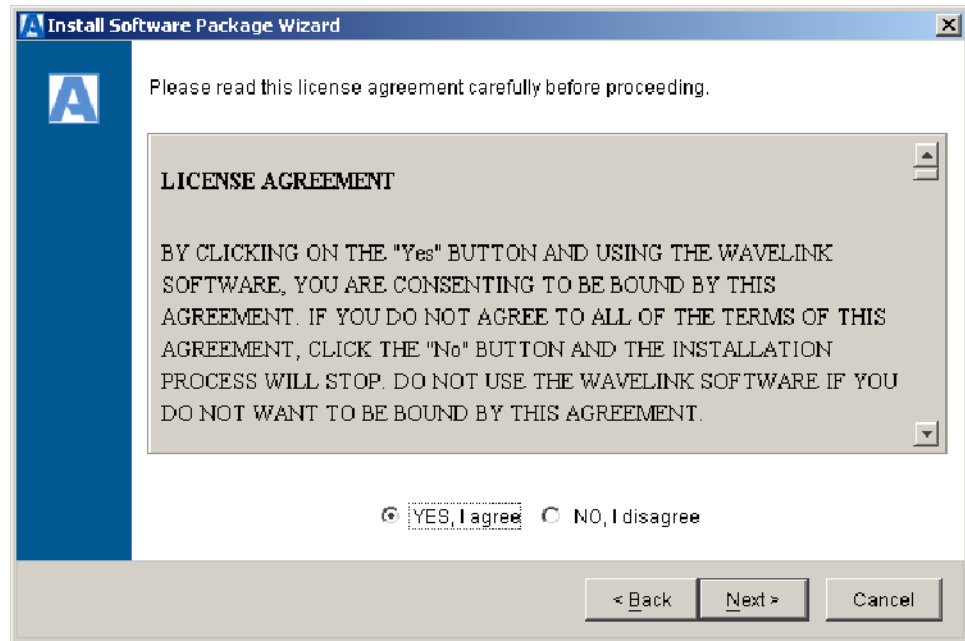
- 5 Browse to the “C:\Program Files\Intermec\TE2000\” folder, select the applicable computer folder, select the applicable TE_XXXX.AVA file, then click **Select** to close.



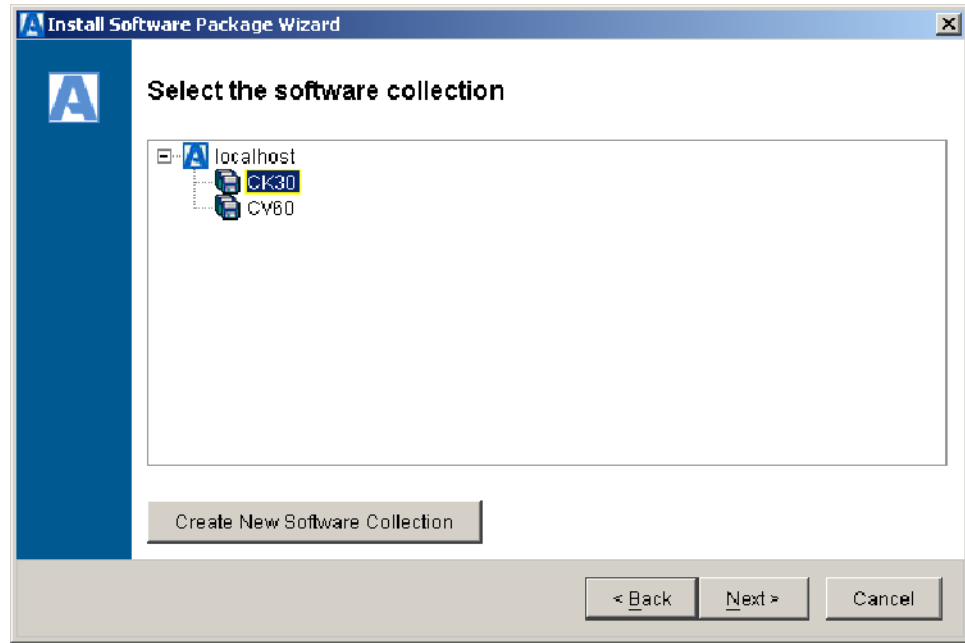
6 Click Next to continue.



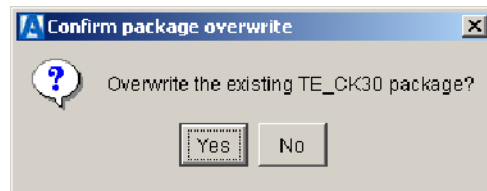
7 Click Yes, I agree to accept the license agreement, then click Next to continue.



- 8 Select a software collection to house the files, one that reflects your computer (such as “700,” “CK30,” “CK31,” or “CV60”) if the remote configuration package was installed. If necessary, click **Create New Software Collection**, enter the appropriate name., then click **OK** to return to the Select Software Collection screen. Click **Next** to install the package, then click **Finish**.




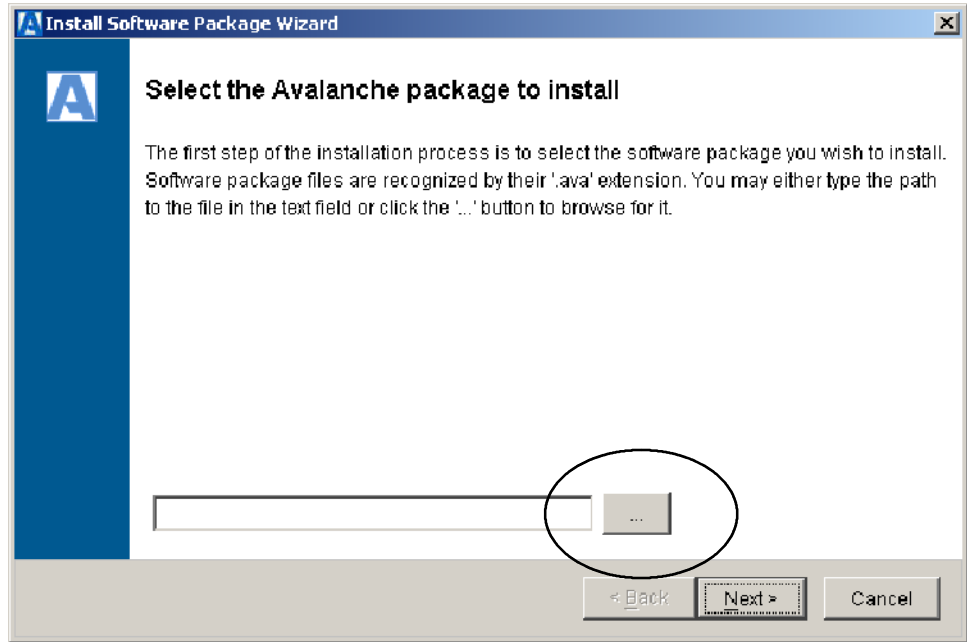
If you are overwriting a package, click Yes to continue.



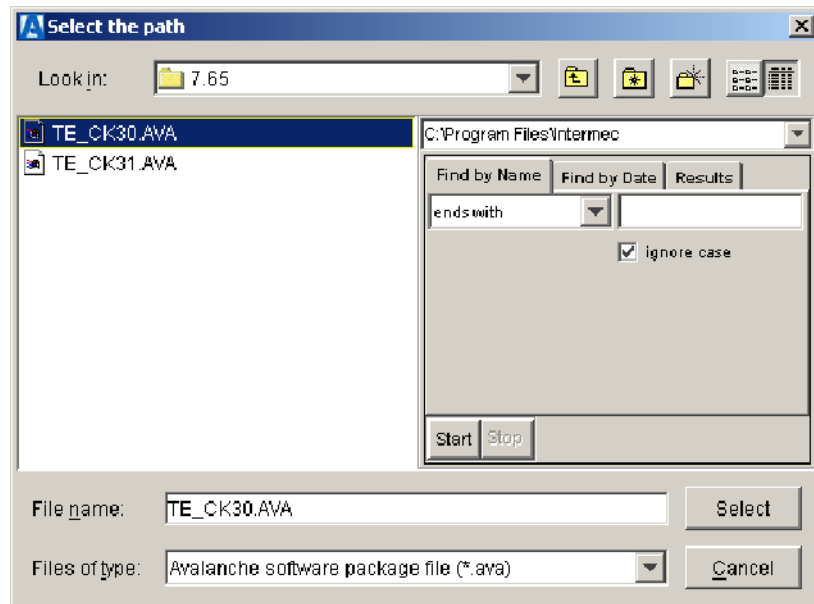
Installing a Config AVA Package onto Your Desktop

Now you need to install the configuration AVA package applicable for your computer. Note: “XXXX” denotes a computer, such as the CK30.

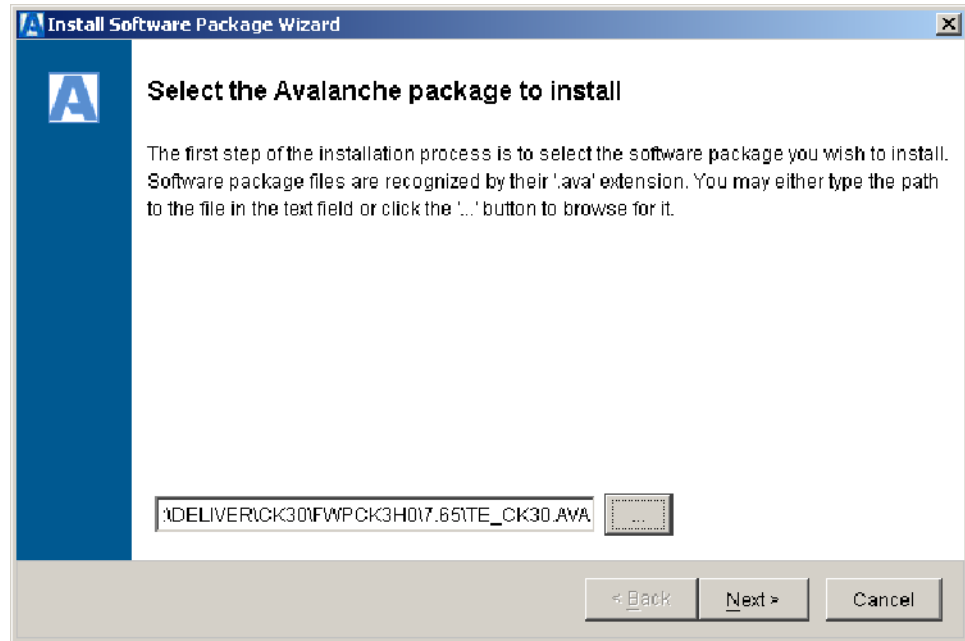
- 1 From the *Avalanche toolbar*, select **Software Management > Install Software Package**.
- 2 Click the  button to browse for the appropriate .AVA file *circled in the illustration on the next page*.



- 3 Browse to the appropriate folder, select the applicable computer folder, select the applicable XXXXCFG.AVA file, then click **Select** to close.



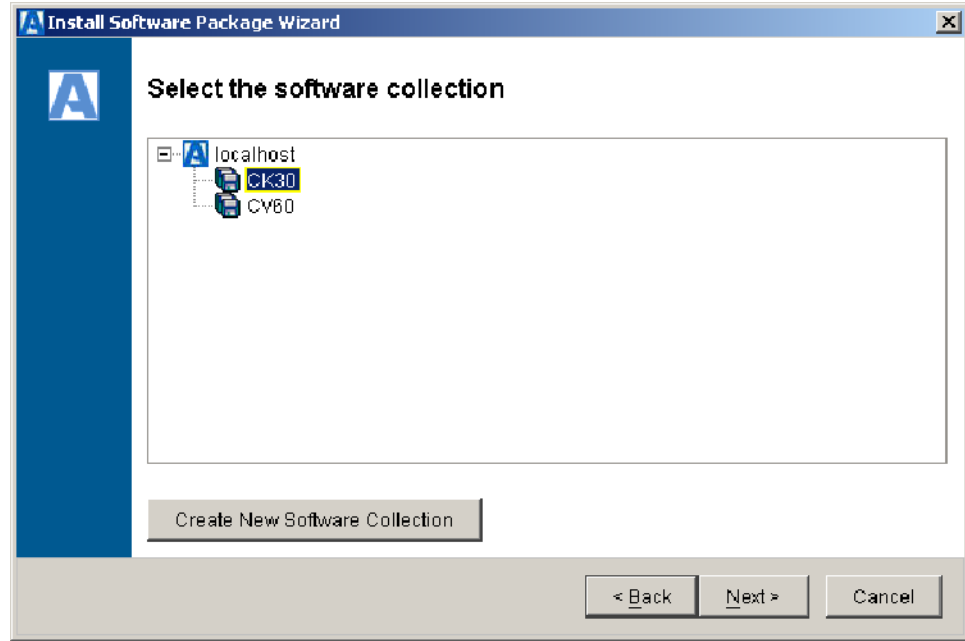
4 Click Next to continue.



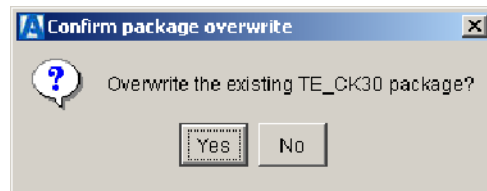
5 Click Yes, I agree to accept the agreement, then click Next to continue.



- 6 Select a software collection to house the files, one that reflects your computer (such as “700,” “CK30,” “CK31,” or “CV60”) if the remote configuration package was installed. If necessary, click **Create New Software Collection**, enter the appropriate name., then click **OK** to return to the Select Software Collection screen. Click **Next** to install the package, then click **Finish**.



If you are overwriting a package, click Yes to continue.



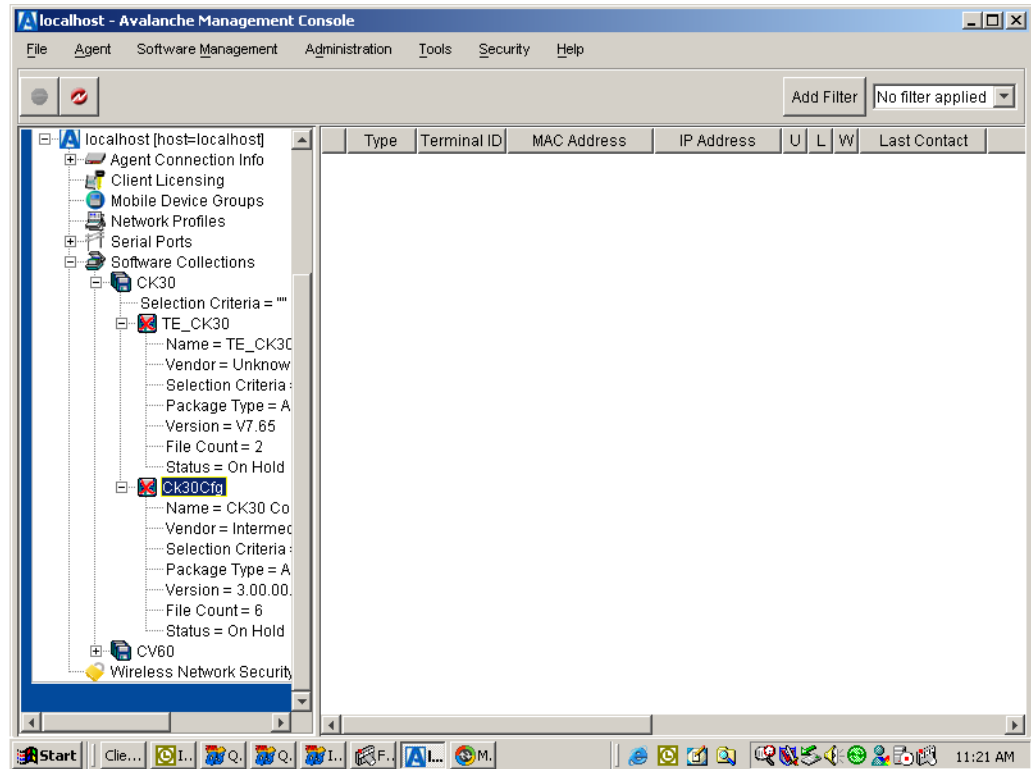
Configuring the Intermec Settings using Wavelink Avalanche



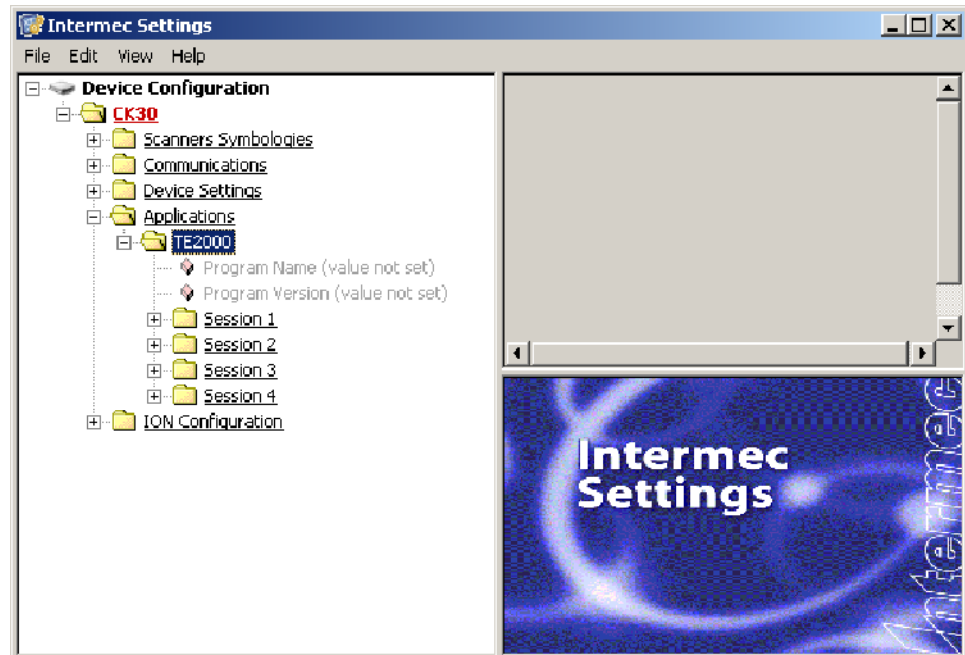
Note: These instructions assume that the Wavelink Avalanche application was installed on your desktop. “XXXX” denotes a computer, such as the CK30.

To access and configure the Intermec Settings using Wavelink Avalanche, you must have the applicable XXXXCFG.AVA package installed in the Avalanche Management Console. *Note that these sample illustrations refer to the CK30.*

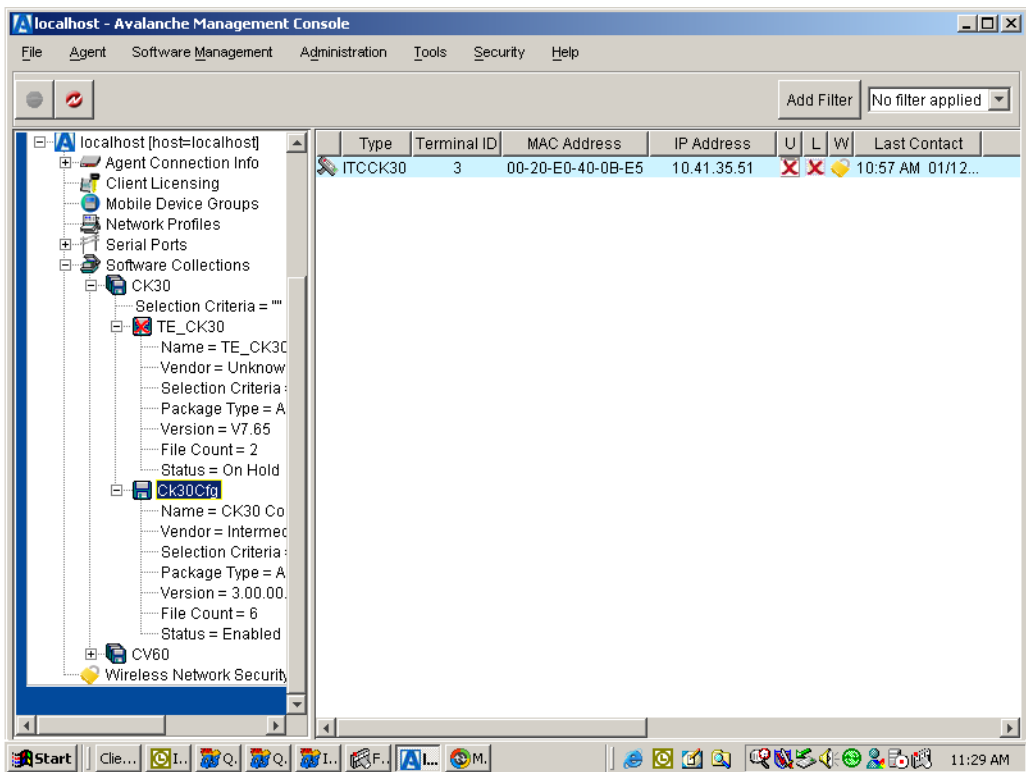
- 1 From the Avalanche Agents tree structure, expand to the applicable XXXXCFG.AVA package, then do a right-click for a pop-up menu.



- 2 Select **Configure Package > XXXX Settings** to access the Intermec Settings application for this software collection. Click to expand (+) down to the “TE2000” folder and make the necessary adjustments. *Note that values that are changed but not saved appear in blue in the tree structure.*



- To save your changes and close the dialog, either select **File > Exit** or close the dialog, then click **Yes** when prompted to save your changes.
 - To save your changes, but not close the dialog, select **File > Save Settings**.
 - To return to the defaults, select **Edit > Restore Item Defaults**.
- 3 Right-click the XXXXCFG.AVA in the Avalanche Agents tree structure for a pop-up menu, then select **Enable Package**.
 - 4 The package is denoted by a red “X” under the “U” column in the Client Update Status Row, *circled in the following example*: This indicates the package was configured and is ready for distribution.



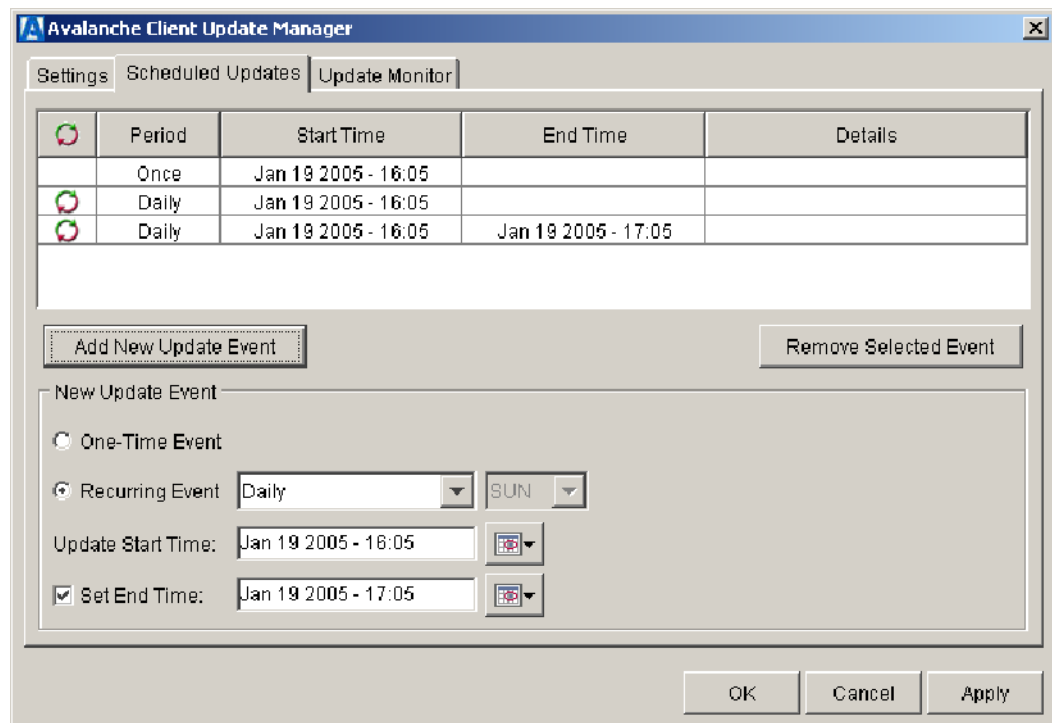
- 5 The package is not sent to the computer until its next scheduled update unless you manually update the computers from the Avalanche Console or pull the updates from the Avalanche Enabler on the computer.
 - To manually update your computers from the console, select the clients that are to receive the latest package, do a right-click for a pop-up menu, then select **Update Now**.

Updating the Computer from the Avalanche Console

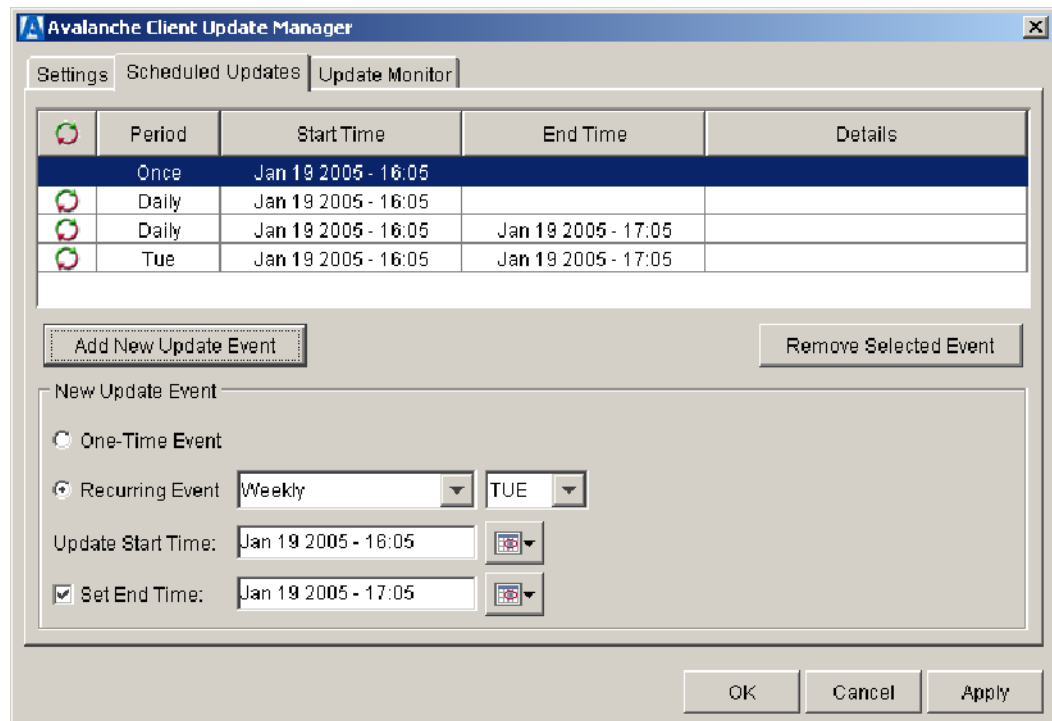
You can dictate when the Avalanche Management Console is to update the computers by doing the following:

- 1 Select **Tools > Client Update Controls** to access the Avalanche Client Update Manager, then tap the **Scheduled Updates** tab.

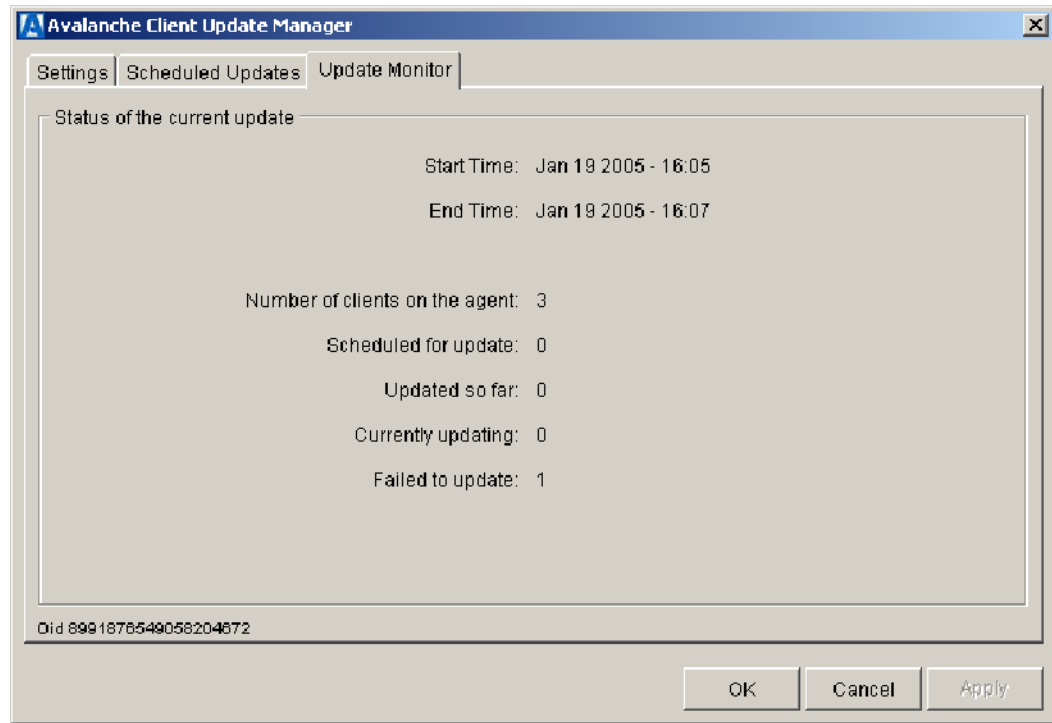
- 2 Make adjustments using the features on the bottom portion of the dialog. Click **Add New Update Event** to insert the event into the listing in the upper half of the dialog.



To remove an event, select that event from the upper half, then click **Remove Selected Event**.



- 3 To view the status of these updates, click the **Updates Monitor** tab for information.



- 4 Click **Apply** to save your changes, click **OK** to save your changes and close the Update Manager.

Enabling the Package on the Computer

The Avalanche Enabler application is installed in all computers to enable packages sent by the Avalanche Management Console. The application is automatically activated on all computers, with the exception of the 700 Color Computer.



**Avalanche
Enabler**

On the 700 Color Computer, you must activate the Avalanche Enabler before you can use the Avalanche Management Console to send updates. From the 700 Computer, select **Start > Avalanche**, or select **Start > Programs**, then tap the **Avalanche Enabler** icon.

Using Microsoft ActiveSync

These instructions assume that Microsoft ActiveSync was installed onto your desktop or laptop and is up and running. *If you do not already have Microsoft ActiveSync on your desktop or laptop*, download this application from the Microsoft web site (www.microsoft.com/downloads) and follow the onscreen instructions for installing it on your desktop or laptop.

Establishing a Partnership

To establish a partnership between your desktop or laptop (with an available serial port) and your computer, you need:

- A USB cable or a female-to-female ActiveSync 9-pin cable.
 - Use P/N: 321-563-001 for DB9F to DB9F connections
 - Use P/N: 321-588-001 for DB9F to Hirose connections
- Microsoft ActiveSync version 3.7.1 or later.
- An AD1 Communications Dock for the CK30 or CK31 Computer
- A 700 Series Dock for the 700 Color or CV60 Computer.

If Upgrading the 700 Color Computer

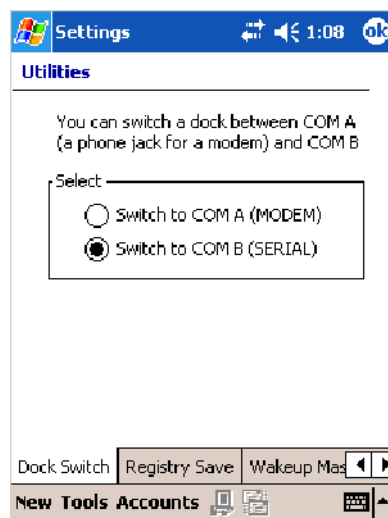
For the 700 Color Computer, this can also be a serial, Ethernet, InfraRed, or 802.11b ActiveSync connection. Files can then be copied using File Explorer on a desktop or a laptop computer. This option is usually only good when updating a few computers.

Before using a serial cable to establish your partnership between the 700 Color Computer and your desktop, you need to adjust the 700 Computer to link to COM B on your dock to establish serial communications.





Utilities

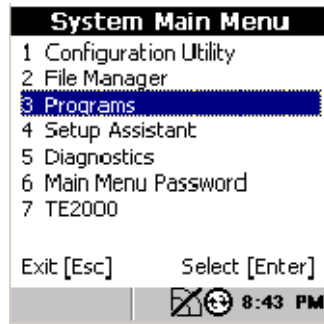
- 1 From the 700 Color Computer, select **Start > Settings**, tap the **System** tab, then tap the **Utilities** icon.
- 2 Tap the **Dock Switch** tab, select **Switch to COM B (SERIAL)**, then tap **ok** to close the applet.



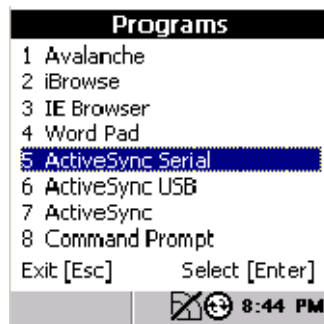
If Upgrading the CK30 or CK31 Computer

Before using a serial cable to establish your partnership between the CK30 or CK31 and your desktop or laptop, you need to adjust the CK30 or CK31 COM port settings to establish serial communications.

- 1 From the CK30 or CK31 keypad, press ,  to access the System Main Menu, then select **Programs**.



- 2 Select **ActiveSync Serial** to set the COM port to “38400,” “N,” “8,” and “1” for a serial connection with an ActiveSync cable.



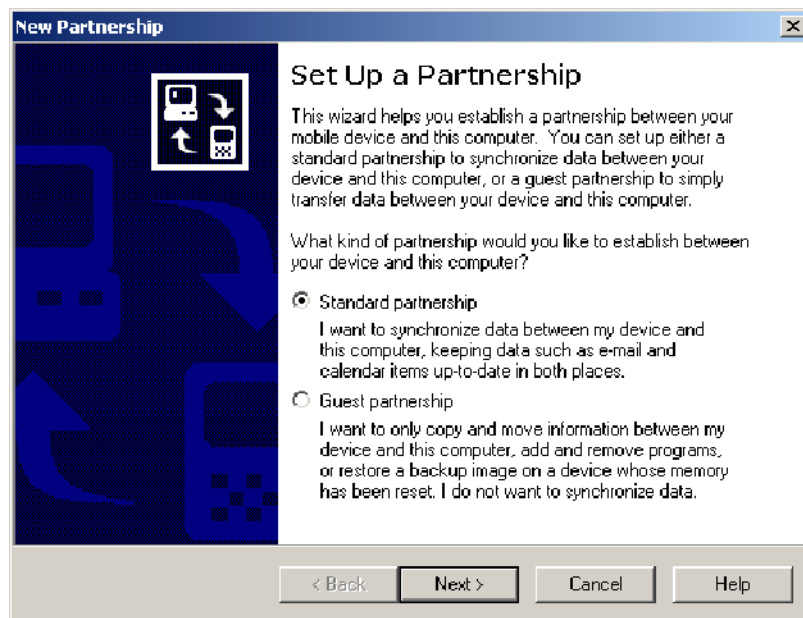
Connecting Your Computer to Your Desktop or Laptop

Note that the illustrations used in these instructions are from a connection with a 700 Color Computer.

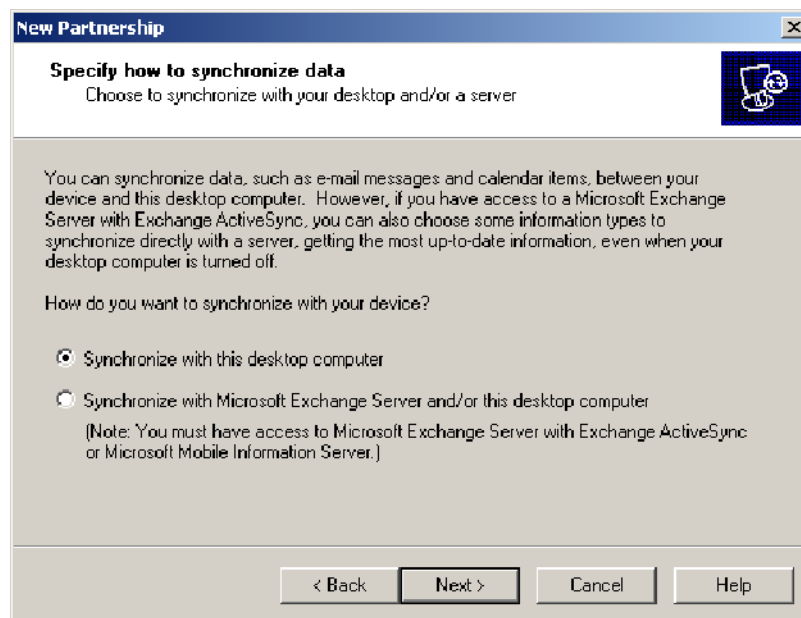
- 1 Insert your computer into its dock, then connect the dock to your desktop or laptop via ActiveSync, IrDA, or serial.
- 2 From the desktop or laptop, wait for the Microsoft ActiveSync application to detect your computer. then set up a new partnership. Click **Next** to continue.



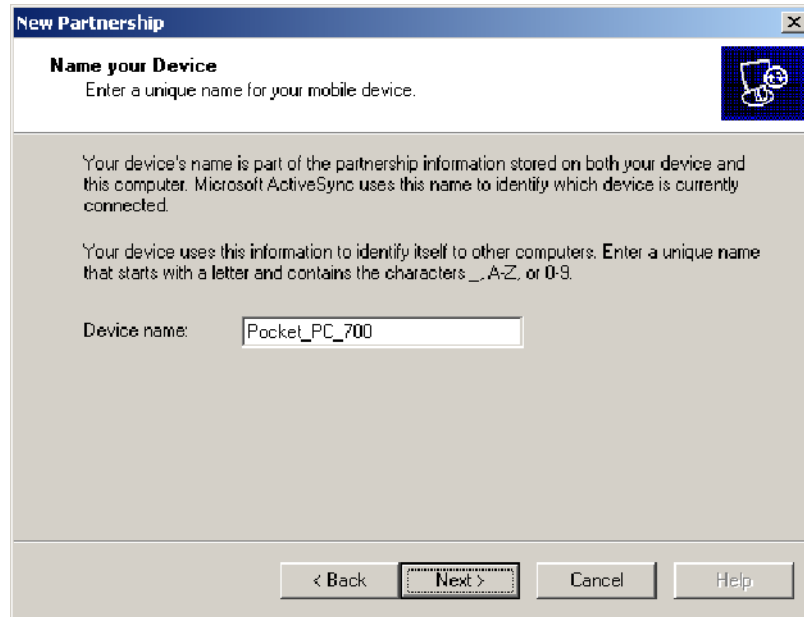
Note: If you do not need to synchronize files between your computer and your desktop or laptop, you can select “No” for guest access and skip steps 3, 4, and 5.



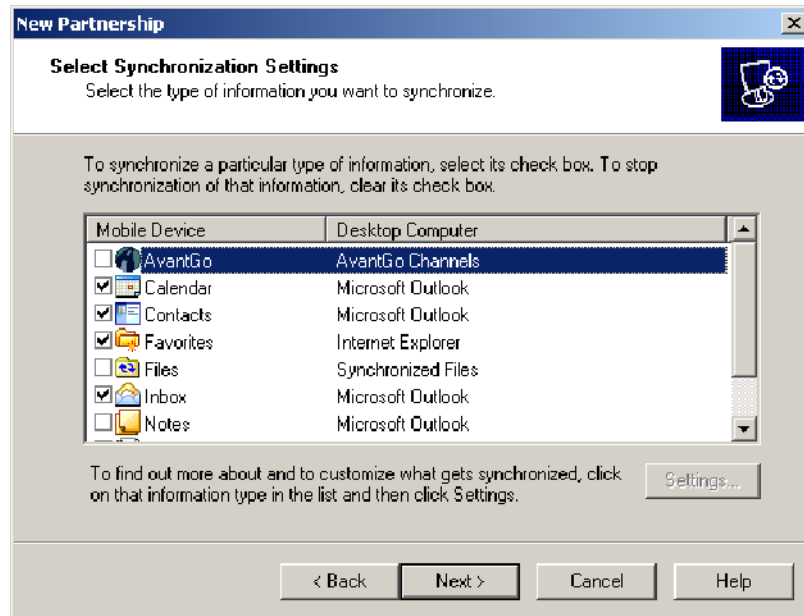
3 *Optional* Click Next to synchronize with this desktop or laptop.



- 4 Enter a name unique for this computer, then click **Next** to continue.

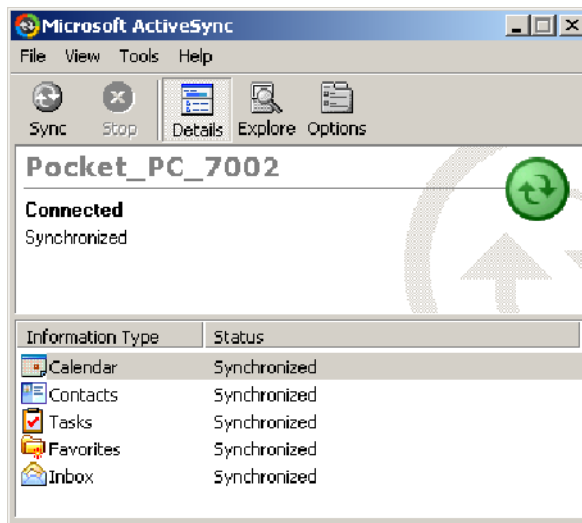


- 5 Select (check) the items to synchronize between your computer and your desktop or laptop, then click **Next** to continue.



- 6 Click **Finish** to complete the connection between the computer and your desktop or laptop.

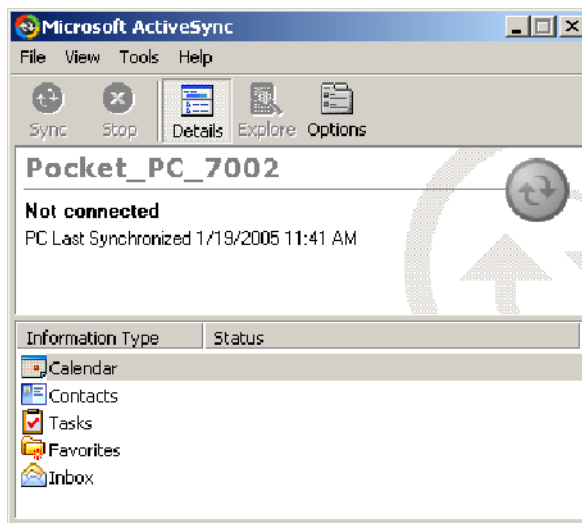
When the partnership is established, the Microsoft Application appears on your desktop or laptop with your assigned computer name and the “Connected” status.



An ActiveSync icon (*shown left*) also appears on the status bar of your computer. This indicates it has established an ActiveSync partnership with your desktop or laptop.



Note: If Microsoft ActiveSync does not establish a partnership on the first try, the message “Not Connected” appears on your desktop. Make sure all of your cables are securely connected and select **File > Get Connected** until your computer is detected.



Now that the partnership is established, Microsoft ActiveSync initiates all future connections. To connect to your desktop or laptop using Microsoft ActiveSync in the future, place your computer in a dock, then connect the computer to your desktop or laptop using a cable; or take the computer out of the dock, then insert it back into the dock.

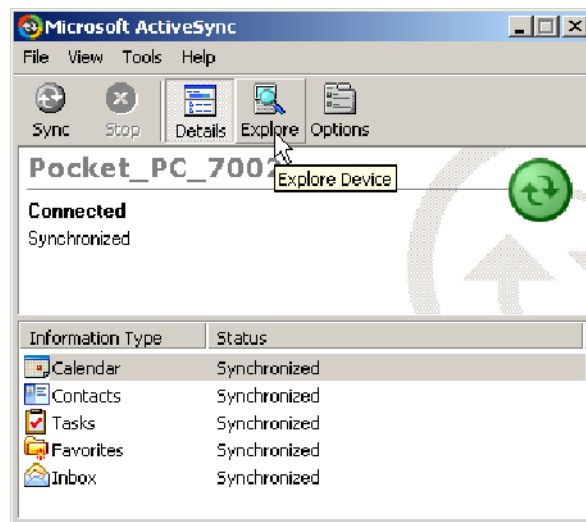


Note: If using this method on multiple computers, a unique name is required for each computer. Do these steps for each computer in the system.

Using Microsoft ActiveSync to Copy Files

Do the following to copy files onto the computer using Microsoft ActiveSync. *Note that the illustrations used in these instructions are from a connection with a 700 Color Computer.*

- 1 Connect the computer to your desktop or laptop using Microsoft ActiveSync. For help, see “Connecting Your Computer to Your Desktop or Laptop” starting on page 31.
- 2 From the Microsoft ActiveSync application on your desktop or laptop, click **Explore** for the Windows Explorer on your desktop or laptop to access the “Mobile Device” folder on your computer.



- 3 From your desktop or laptop, select **Start > Windows Explorer**, then browse the “C:\Program Files\Intermec\TE2000” path. Do the applicable copy instructions below:

700 Color Computers

Select any of the following CAB files needed for your computer, right-click for a pop-up menu, then select **Copy**.

- TE_700.CAB
- TEIBROWSE.CAB
- TELAUNCHER.CAB

CK30 or CK31 Computers

Select the files to copy on your desktop or laptop and copy them to the clipboard.

CV60 Computers

Locate and select to highlight the TE_CV60.CAB. file, do a right-click, then select **Copy**.

4 Do the applicable paste instructions below:

700 Color Computers

- a Within the “\Mobile Device” directory, select **My Pocket PC > SDMMC_Disk > cabfiles**.
- b Do a right-click for a pop-up menu, then select **Paste**.
- c Create a subdirectory called “\2577” in the “\SDMMC_Disk” folder on the Secure Digital storage card. Copy the AUTORUN.DAT, AUTORUN.EXE, and AUTOCAB.EXE files to this subdirectory. These files are located on your desktop in the “C:\Program Files\Intermec\TE2000” folder.

CK30 or CK31 Computers

In the Mobile Device window, open the destination folder and paste the files in the standard “\CK_FFS\Factory Defaults” folder.

CV60 Computers


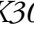
Go to the root folder on the CV60 Computer, do a right-click, then select **Paste**. Accept any prompts that may appear.

5 When all of the files are pasted, do the following applicable finish:

700 Color Computers

Perform a warm-boot on the computer. When the computer reboots, the newly copied CAB files automatically activate their utilities.

CK30 or CK31 Computers

On your CK30, press ,  to access the System Main Menu, select **File Manager** to navigate to the “\SDMMC Disk” folder, then select the TE_CK30.CAB file to launch the TE 2000 installation.

On your CK31, select **Start > Programs > Windows Explorer**, navigate to the “\SDMMC Disk” folder, then tap the TE_CK31.CAB file to launch the TE 2000 installation.

The TE 2000 application executes automatically when the computer is powered on. When installation is complete, press and hold the **Y** key for about five seconds to perform a warm-boot.

CV60 Computers

Close the ActiveSync window. You may disconnect the ActiveSync cable. *From the CV60 Computer*, tap the **My Computer** icon, then double-tap the TE_CV60.CAB file to install the TE 2000 application. When all of the files are pasted, perform a warm-boot on the CV60 Computer to launch the TE 2000 application.

Using Intermec SmartSystems

This is a list of icons showing what you should see for your handheld, mobile, or vehicle mount computer when working in the SmartSystems application. Be sure to read the description next to each icon to ensure it is for your handheld, mobile, or vehicle mount computer. See the *SmartSystems Online Manual* for information on using the SmartSystems application.



Busy Signal - Software is transferring.



The default Intermecc Settings values.



The latest operating system build.



The latest iBrowse application. *For the 700 Color, you may see two icons for two different operating systems. See the iBrowse User's Guide (P/N: 961-055-015) to determine which applies.*



The latest iLaunch application. *For the 700 Color, you may see two icons for two different operating systems. See the iLaunch User's Guide (P/N: 961-055-016) to determine which applies.*



The DEFAULT.KBD file as created or modified for the handheld, mobile, or vehicle mount computer using the SIP Designer application.



The backup settings for the handheld, mobile, or vehicle mount computer.



The latest TE 2000 software build.



Corporate Headquarters
6001 36th Avenue West
Everett, Washington 98203
U.S.A.

tel 425.348.2600

fax 425.355.9551

www.intermec.com

TE 2000™ Installation and Setup Instructions



P/N 962-055-010 REV E