

INSCALETM

MARC
866-0911

Indiana Scale Company Inc.

1607 Maple Ave.

Terre Haute, IN 47804

Tel: 1-800-722-5314 Fax: 1-812-232-6876

(Airport terminal services)

LUC,
Can you bring
this down to MTC
for them to take a
look at
Thanks, B.

Air Freight Scale Installation Manual

Pancake scales are corner sealed and calibrated at the factory prior to shipment. The scales are then disassembled and properly packaged to protect components against loss and damage during shipment.

Carefully follow the simple instructions for proper assembly of scale.

Step 1

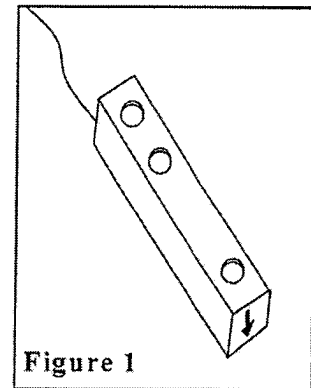
Inspect surface area and installation site. Ensure surface is flat, level and strong enough to support the scale and its rated capacity. Recommended- Six to eight inch re-enforced concrete base is best for this application.

Routing of cables, installation of conduit, placement of junction box and location of indicator should be planned out prior to installing scale.

Step 2

Install load cells into scale with arrows on the front of the load cell pointing down (Figure 1).

Proper placement of load cells is shown in diagram S-4. Each load cell is numbered according to its respective position in the scale platform. (The number for each load cell is located on the end of each the cable).



Torque load cell bolts to 115 lbs.

Leave cables coiled for each load cell and duct tape them to the top of the scale to protect them during placement of the modules.

Step 3

Set scale **Section A** into place. Install foot assemblies into four load cells. See diagram S-2 and S-3. Level and adjust height of scale by using $\frac{3}{4}$ " flat washers.

Tip: Use one of the ramps to gauge proper height.

The top of the scale and the ramps should be the same height. Foot assemblies should sit firmly on the ground with no rocking in the platform.

Step 4

Run load cell cables through eyes under lip of top plate and connect the junction box. See diagram S-1 and S-4. Junction box is usually located under ramp between gussets.

Step 5

Position ramps around scale and leave a $\frac{3}{8}$ " gap between ramps and scale. Adjust foot assemblies to fit between gussets on ramps (Note: Holes are off-set to allow for this). See diagram S-1. Once all adjustments are made to foot assemblies, drill $\frac{1}{2}$ " holes in concrete with hammer drill and install anchors in foot assemblies. Apply never seize to anchors.

Position all ramps in place. Drill holes with hammer drill and anchor ramps with $\frac{1}{2}$ " anchors. Apply never seize to anchors.

Diagram S-1

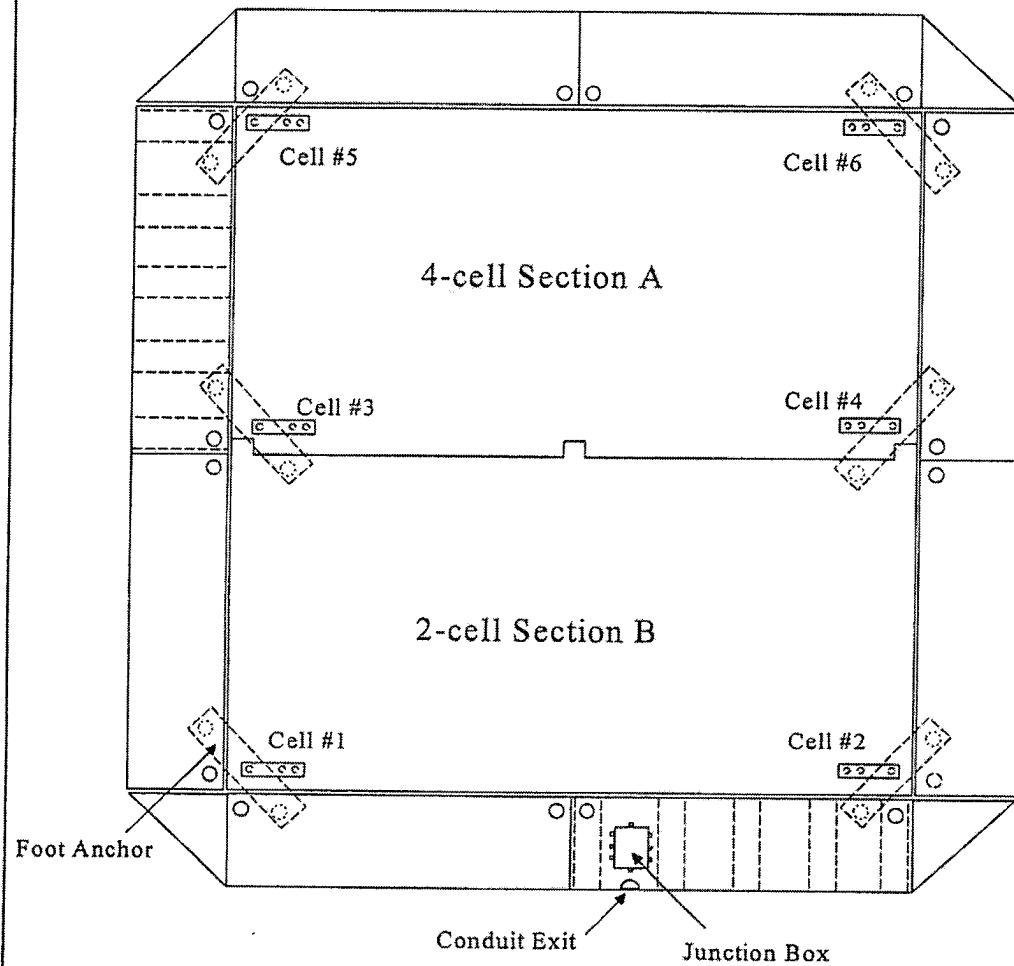
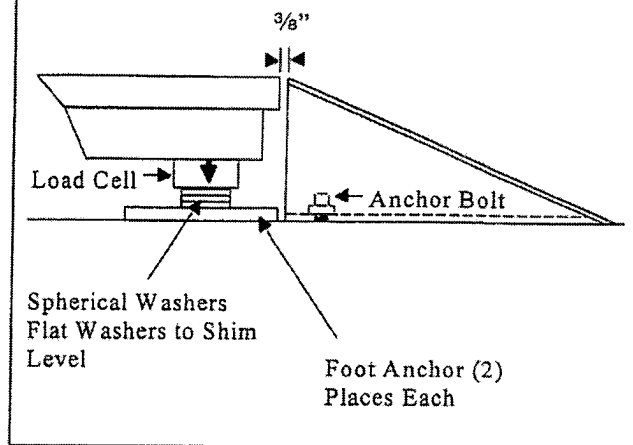


Diagram S-2



Standard Anchors $\frac{1}{2}$ " x 3"-Molly Min.
Into Concrete.
Shim Washers Are $\frac{3}{4}$ " SAE Washers,
Quantity may vary with leveling surface.

Diagram S-3

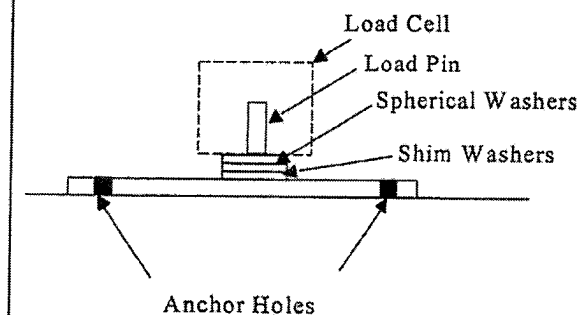
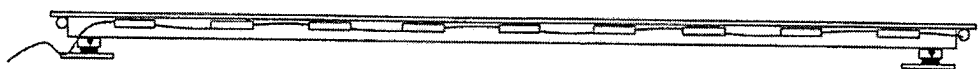
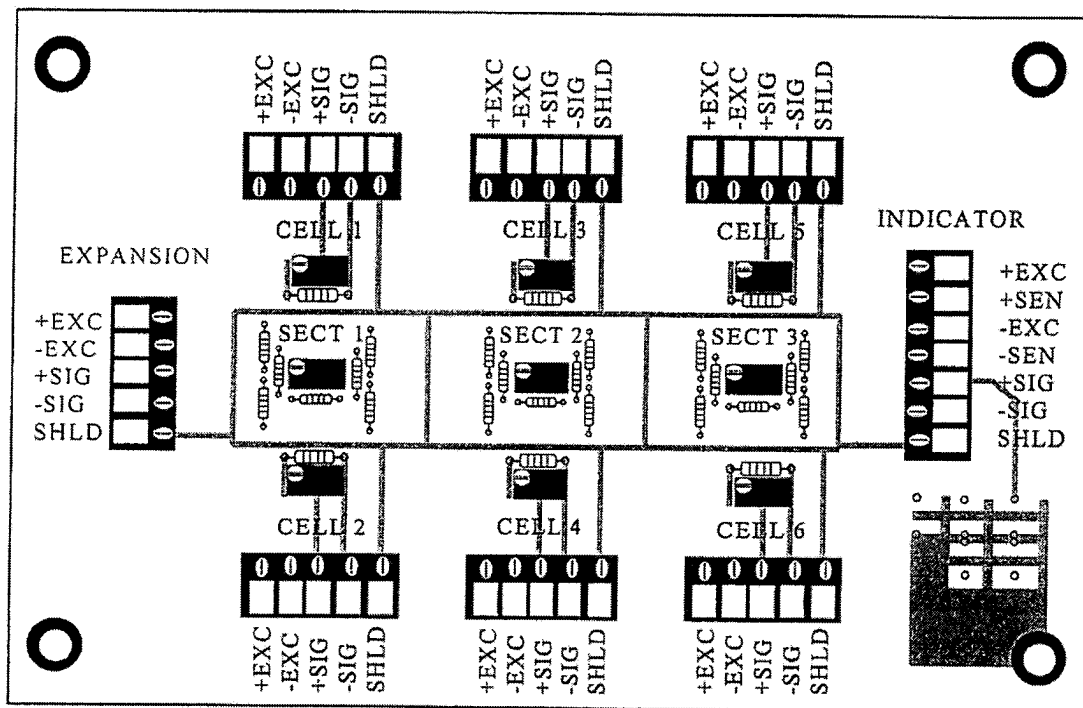


Diagram S-4



Load Cell Cables run under top plate through eyes along sides of scale.

Diagram S-5



| | |
|-------|-------|
| + Exc | Red |
| - Exc | Black |
| + Sig | Green |
| - Sig | White |