

# ACI

## Vehicle Detector Loops

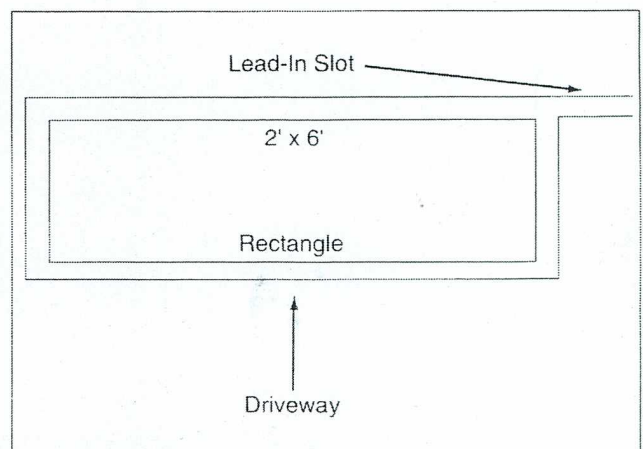
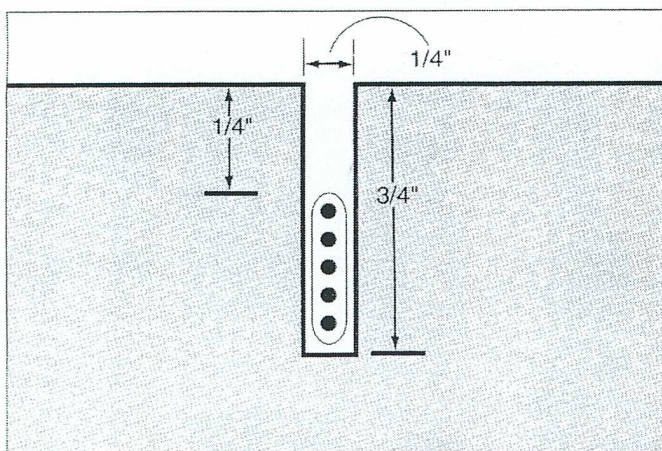
The Amano Cincinnati, Inc. Loop is a high performance extension of the Amano Cincinnati, Inc. line of vehicle detectors and is designed to operate with gate and ticket printer control, counting and other applications in parking facilities. The loop consists of 5 turns of Teflon coated wire wrapped in vinyl plastic tape. Teflon is the most suitable material available for direct burial operation. It possesses outstanding physical and electrical properties, resisting oils, heat, cold, water, gasoline, acids, alkalis, and solvents that are likely to be encountered during parking installations. The #18 AWG wire consists of concentrically stranded silver-coated copper conductors, manufactured to MIL-W-16878 military specifications.

### DIMENSIONS

The 5 turn loop has a perimeter of 16'. The lead-in wire is twisted 12 turns per foot and is 25' long. For use in operation of gates or ticket printers, the loop should be installed in a 2' x 6' rectangular groove centered in the traffic lane. The L6 4' x 8' loop with 25' lead-in and L7 6' x 12' loop with 25' lead-in are also available for special applications.

### INSTALLATION

1. Refer to the Amano Cincinnati, Inc. site installation drawings for placement of the loop groove. A heavy duty electrical carpentry saw equipped with a masonry blade can be used.
2. Reinforcing concrete steel rods or steel mesh should be at least 2" below the loop. This is particularly important if steel mesh is used, as sensitivity may be affected.
3. Cut 3 sides of the appropriately sized rectangular groove centered in the traffic lane 1/4" wide and 3/4" to 1" deep. Also cut a groove for the lead-in wire to come out of the loop on the corner nearest to the control equipment.
4. Lay the loop in the groove to determine the exact location of the fourth side of the rectangle, and finish cutting the groove.
5. Place the loop and lead-in wire in the groove. Run the lead-in wire to the vehicle detector.
6. Cover the detector loop and groove with a suitable sealer, following manufacturer's instructions. Use a sealer such as Sealer E707 from the Bondo Corporation or 491 HP traffic vehicle loop detector sealant from the Euclid Chemical Co.



 **AMANO CINCINNATI, INC.**

140 Harrison Avenue, Roseland, NJ 07068-1239 Tel: (800) 551-PARK Fax: (973) 364-1086  
Canada, Tel: (800) 387-3388 Fax: (905) 624-5464 • <http://www.amano.com>

Specifications are approximate and are subject to change without notice. ©2000 Amano Cincinnati, Inc. Printed in U.S.A. LP-SBVDL00