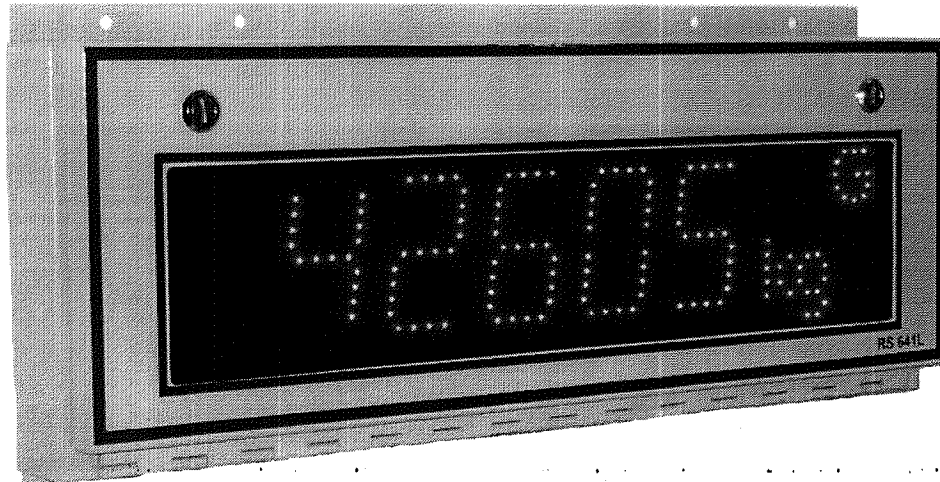


# *Advatek Systems Inc.*



**SUPER BRIGHT DIRECT SUN LIGHT VISIBLE**

**MODELS: RS641L RS661L**  
**4" & 6" LED DISPLAY**

**SERIAL INPUT:**  
**(RS232, RS485/RS422 and 20ma Current Loop)**

**INSTALLATION & OPERATION**  
**INSTRUCTION MANUAL**

# **TABLE of CONTENTS**

**Introduction**

**Specifications**

**Trouble shooting guide**

**Warning**

**Physical characteristics**

**Baud rate and Weight Indicator selection**

**Interface connections and Data Type Selection**

**Warranty**

# **INTRODUCTION**

**This manual contains information for the installation and operation of Models RS641L and RS661L Led type Digit Remote Displays.**

**The Remote displays come in 4" and 6" standard digit sizes. These displays accept ASCII characters with selectable baud rates from hosts of selectable Digital Weight Indicators that transmit RS232, RS485, RS422 or 20ma Current Loop data.**

**Application of these units is quite suitable from Warehouse Shipping and Receiving to outdoor Truck Scales.**

**The Led Displays compose of individual led's that are oval in shape red or yellow in color. Having horizontal and vertical viewing angles of 70° and 30° respectively. The intensity varies from minimum to maximum in 16 selectable steps.**

**Both models come as standard with 6 Numeric digits with lower case words for lb\kg and upper case G/N for Gross /Net. This meets with the Weight & Measures standards.**

**The weatherproof steel enclosure has a 1/4" bronze lens as the viewing area. The units can be easily wall mounted or harnessed on a pole with appropriate strapping.**

# **SPECIFICATIONS**

<b>Input Types:</b>	<b>RS232, RS485/RS422 and Serial Current Loop</b>
<b>Temperature:</b>	<b>- 40°c to 80°c</b>
<b>Power supply:</b>	<b>Desktop Modular Type 12Vdc 2.5A Approvals: UL CUL, TUV/GE, CE. EMI: FCC part 15 Class B</b>
<b>Led specifications:</b>	<b>Oval-Red or yellow with approximately Luminous Intensity of 3500mcd Horizontal and Vertical viewing Angles 70° and 30°.</b>
<b>Power consumption:</b>	<b>10-15W Maximum</b>
<b>Crystal frequency:</b>	<b>3.6864 MHz</b>
<b>Clock frequency:</b>	<b>307.3 KHz</b>

# **TROUBLE SHOOTING GUIDE**

- |                              |  |
|------------------------------|--|
| <b>No power:</b>             | <b>Make sure the AC plug is inserted Into the power module securely. Measure the 12vdc is output by the module.</b>  |
| <b>No Display:</b>           | <b>Check you have Data on your Incoming interface cable.</b>   |
| <b>Display not updating:</b> | <b>Place display in TEST MODE. If working check interface.</b>   |
| <b>Interface problem:</b>    | <b>Confirm by using alternate port to The one you are using.<br/>Check the Jumper for RS232, 20MA, RS485 selection.<br/>Replace the interface IC's H11A1, MC 1489 or MAX 488.</b>                  |
| <b>Led problems:</b>         | <b>Single led not working. Replace.<br/>Segment not working. Check all the led's in the segment.<br/>If one board on the 6" display does not light up check interconnect wires between boards.</b> |

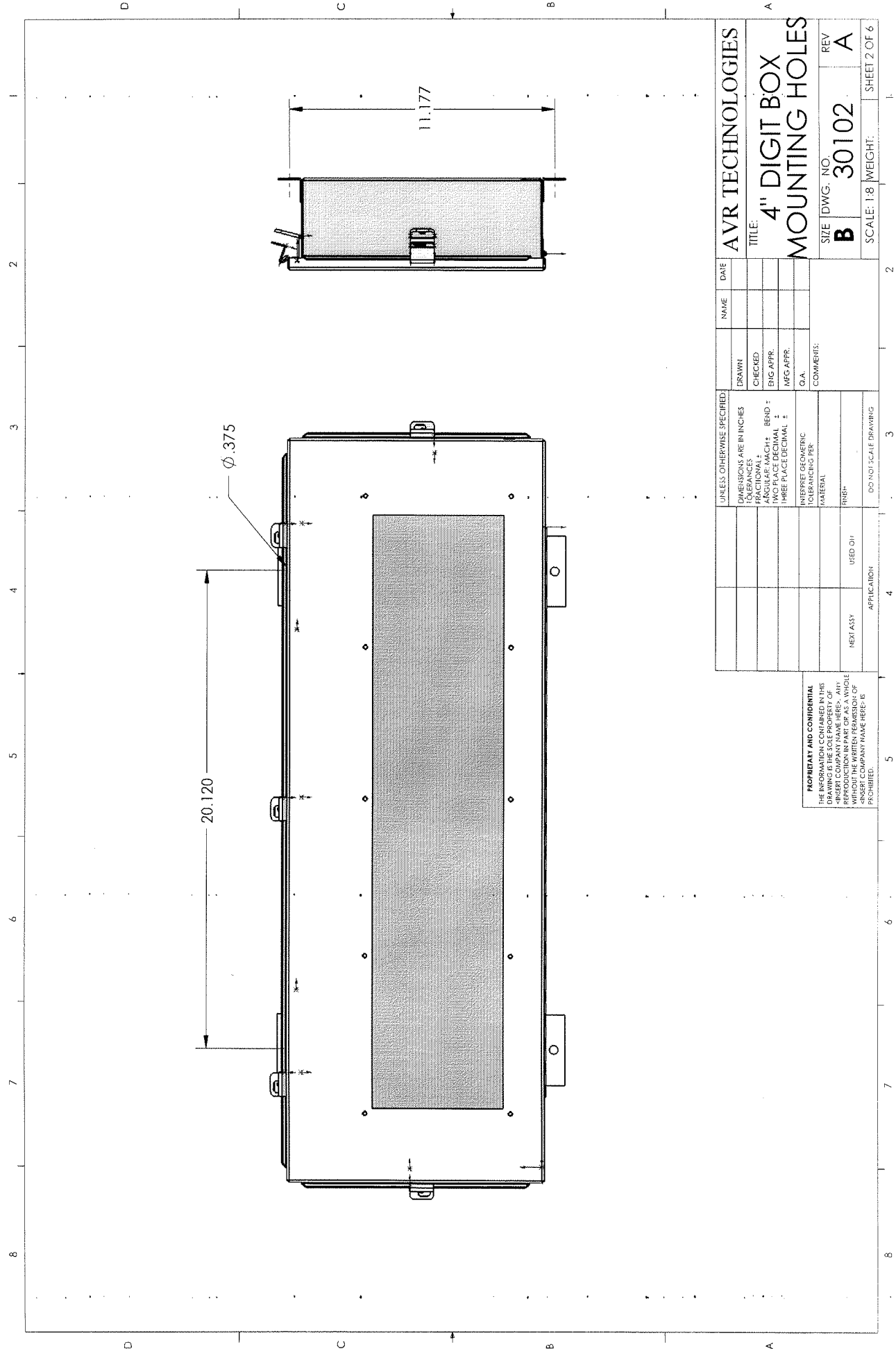
# **WARNING**

If drilling into the box make sure iron filings do not get lodged on the display board. It is recommended that the assembly be removed before commencing any work.

Mount the display at an angle best suited for the application so that maximum visibility is obtained horizontally and vertically for the viewer.

Do not run the interface wire for the display alongside or near high frequency cables of CR Radio etc. Antennas should be mounted away from the device as far as possible to negate the presence of interference.

**USERS OF CB RADIOS AND SUCH SHOULD REFRAIN  
FROM USING THEM NEAR THE DISPLAY.  
USE OF SUCH ITEMS MAY RESULT IN THE  
MALFUNCTION OR PERMANENT DAMAGE TO THE  
INSTRUMENT.**



UNLESS OTHERWISE SPECIFIED:		NAME	DATE	AVR TECHNOLOGIES	
TOLERANCES	DRAWN			TITLE:	
FRACTIONAL ±	CHECKED			4" DIGIT BOX	
ANGULAR ±	ENG APPR.			MOUNTING HOLES	
DECIMAL ±	ENG APPR.			SIZE DWG. NO.	
THREE PLACE DECIMAL ±	MFG APPR.			B 30102	
	Q.A.			SCALE: 1:8	
INTERPRET GEOMETRIC TOLERANCING PER:	COMMENTS:			SHEET 2 OF 6	
MATERIAL:					
FINISH:					
USED DIT					
APPLICATION:					

PROPRIETARY AND CONFIDENTIAL  
THE INFORMATION CONTAINED HEREIN IS THE PROPERTY OF AVR TECHNOLOGIES, INC. ANY REPRODUCTION IN PART OR AS A WHOLE WITHOUT THE WRITTEN PERMISSION OF AVR TECHNOLOGIES, INC. IS PROHIBITED.

## MODE SELECTION SETTINGS

S1_8	S1_7	S1_6	S1_5	S1_4	MODE	DESCRIPTION
On	On	On	On	On	0	DF-1000 WESTERN GSE 465 (<stx>spspwwwwwwsp<lb or kg>spspspsp<GR, NT or TA>cr)
On	On	On	On	Off	1	TOLEDO or FAIRBANKS (Gross Weight)
On	On	On	Off	On	2	UMC600 or IQ355
On	On	On	Off	Off	3	GSE550 or AD4323(Streaming Message)
On	On	Off	On	On	4	TOLEDO or FAIRBANKS (Tare Weight)
On	On	Off	On	Off	5	CARDINAL SB-400
On	On	Off	Off	On	6	CARDINAL SB-200
On	On	Off	Off	Off	7	TEST MODE
On	Off	On	On	On	8	TEST MODE
On	Off	On	On	Off	9	WEIGH-TRONIX 1310(<stx><G/N+-123456kg/lbcr)
On	Off	On	On	Off	9	WEIGH-TRONIX 1310(<stx>G/N-123456kg/lbcr)
On	Off	On	Off	On	10	WEIGH-TRONIX 1310(<stx>G/N00kg/lbCR)
On	Off	On	Off	Off	11	WEIGH-TRONIX 127(<stx>spspG/Nsp123456spkg/lbcr)
					12	RESERVED
					13	RESERVED
					14	RESERVED
					15	RESERVED
					16	RESERVED
					17	RESERVED
					19	RESERVED
					20	RESERVED

<2>) 1 2 3 4 5 6 7 8 9 10 11 12 13 <13>

## BAUD RATE SWITCH SETTINGS

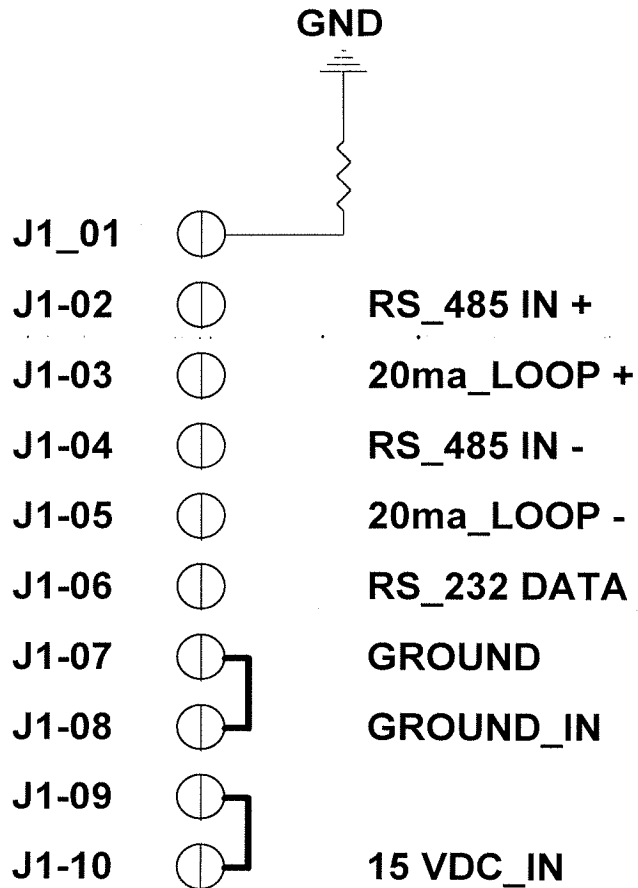
S1_3	S1_2	S1_1	DESCRIPTION
On	On	On	19200bps
On	On	Off	9600bps
On	Off	On	4800bps
On	Off	Off	3840bps
Off	On	On	2400bps
Off	On	Off	1200bps
Off	Off	On	RESERVED
Off	Off	Off	RESERVED

## INTENSITY SWITCH SETTINGS

S2_1	S2_2	S2_3	S2_4	DESCRIPTION
Off	Off	Off	Off	MAXIMUM
Off	Off	Off	On	
Off	Off	On	On	
Off	On	On	On	
On	On	On	On	MINIMUM



## INTERFACE CONNECTOR J1



## JP2 JUMPER CONFIGURATION

JP2_1	RS_232
JP2_2	20ma LOOP
JP2_3	RS_485

# **WARRANTY**

The product supplied with this manual is warranted against Faulty workmanship and material for a period of 1-year commencing from the date of dispatch.

Our obligation assumed under this guarantee is limit to the replacement Or repair of parts after having been notified of alleged defect and after Having been satisfied that a defect pursuant to this warranty in fact exists.

The warranty is void where the unit has been tampered with, modified or if repairs have been attempted by anyone except, an authorized representative of the manufacturing company or it's appointed representative.

The guarantor is not responsible for consequential or special losses or damages, such as loss of use, inconvenience, commercial or Economic loss, defects caused by misuse, negligence, improper Operation or installation.

In addition the warranty shall have no force and effect and shall Not apply if there has been:

- a) Damage caused by lightning.
- b) Damage caused by electrical surges.
- c) Damage caused by water.
- d) Damage or loss to any product or part thereof in transit.
- e) Serial number of the product has been altered or defaced in any Manner whatsoever.

Alternatively, any damage caused by act of God.

Products for attention under guarantee must be returned to the manufacturer freight prepaid. When returning the product or parts thereof a full description of the fault and the mode of operation used when the product failed must be given accompanied by the model number and serial number.

The manufacturer has no other obligation or liability beyond replacement or repair of defective parts.